



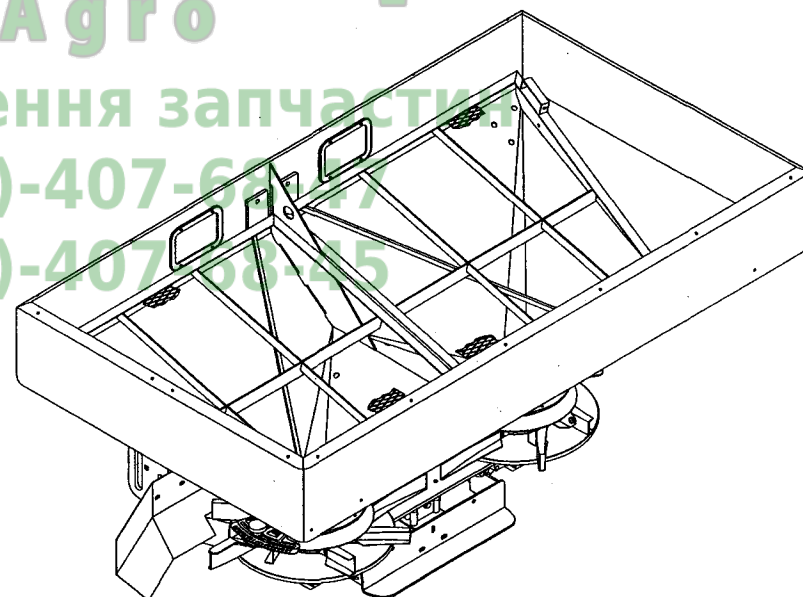
Spare parts list
Ersatzteilliste
Onderdelenlijst
Liste de pieces de rechange
Lista de piezas de recambio
Reservdels lista

RS-M 1050/1700

Замовлення запчастин

(050)-407-68-47

(050)-407-68-45



Prod. series nr 77151

70.009.503/1

© Kverneland

NL:

Niets uit dit boek mag worden veelevoudigd, opgeslagen in een, al dan niet, geautomatiseerd gegevensbestand of openbaar gemaakt; in enige vorm of op enige wijze hetzij elektronisch, mechanisch, optisch, door fotokopieën, microverfilming (inclusief micro- en macrofiche), opnamen, of enig andere manier, inclusief alle video en Cd-systemen, zonder voorafgaande schriftelijke toestemming van de uitgever.

GB:

All rights reserved. No part of this book may be reproduced, stored in a data base or retrieval system, or published, in any form or in any way, electronically, mechanically, optically, by print, photo print, microfilm (including micro and macro fiche), or any other means, including all video and CD systems, without prior written permission from the publisher.

D:

Dieses Buch und alle darin enthaltenen einzelnen Angaben und Abbildungen sind Urheberrechtlich geschützt. Jede Verwertung ausserhalb der Grenzen des Urheberrechts ist ohne ausdrückliche, schriftliche Zustimmung des Herausgebers unzulässig. Das gilt insbesondere für Vervielfältigungen aller Art, Übersetzungen, Mikroverfilmungen, einschliesslich Mikro- und Makrofiche, und die Einspeicherung und/oder Verarbeitung in elektronischen und optischen Systemen, einschliesslich aller Video und CD-Systeme.

F:

La propriété littéraire de ce manuel est protégée et les droits en découlant sont réservés. L'utilisation, même partielle, du texte et des illustrations n'est admissible qu'avec la permission écrite de l'auteur, en particulier la reproduction, la traduction, la restitution par des systèmes photomécaniques ou tous autres, y compris les microfilms, les micro- et macro fiches ainsi que la mise en mémoire et le traitement dans des installations électroniques et optiques, y compris les systèmes vidéo et CD.

ES:

Este manual se acoge al amparo del Derecho de la Propiedad Intelectual. Salvo permisión escrita quedan reservados todos los derechos inherentes en especial los de reimpresión, de traducción, de reproducción en forma fotomecánica ó en cualquier otra forma, incluidos microfilmes, micro- y macrofichas así como el almacenamiento y procesamiento en sistemas electrónicos y ópticos, incluidos todos sistemas de video y CD, aún cuando no se utilice más que parcialmente texto o figura.

I:

Tutti i diritti di autore riservati. L'utilizzazione, anche parziale, del presente manuale, in particolare la ristampa, la traduzione, la riproduzione mediante microfilm, micro- e macroschede, come pure la memorizzazione e/o elaborazione tramite impianti elettronici, videosistemi e sistemi CD compresi, è ammessa solo se autorizzata preventivamente dall'autore per iscritto.

S:

Mångfaldigande eller lagring i databas av denna bok, eller delar av densamma, är förbjudet utan föregående skriftligt medgivande av utgivaren. Förbudet gäller varje form av mångfaldigande genom elektroniskt, mekaniskt, eller optiskt förfarande, genom tryckning, fotokopiering, microfilm (inkl. micro och macro fiche) eller på något annat sätt inklusive alla video- och CD-system.

DK:

Alle rettigheder reserveret. Ingen dele af denne bog må genoptrykkes, lagres i en database eller andet system, eller udgives i nogen form, elektronisk, mekanisk, optisk, ved tryk, fotokopiering, mikrofilm (inkl. mikro- og makrofiche), eller anden måde, inkl. video- og CD-systemer, uden forudgående skriftlig tilladelse fra udgiveren.

AANHAALMOMENTEN/TORQUES/ANZUGSMOMENTE/COUPLES DE SERRAGE/PARES DE APRIETE/ I MOMENTI TORCENTI/ÅTRAGNINGSMOMENT/MOMENTER

- NL** Richtlijnen voor aanhaalmomenten (in Nm) voor zelfborgende moeren, zeskantbouten en moeren.
D Richtlinien für Anzugsmomente (in Nm) für selbstsichernde Muttern, Sechskantschrauben und muttern.
ES Directrices para los pares de apriete (en Nm) para tuercas autoblocantes, tornillos hexagonales y tuercas.
S Riktlinjer för åtdragningsmoment (i Nm) för självlåsand bultar, sexkantsbultar och muttrar.

- GB** Directives for torques (in Nm) for self-locking nuts, hexagonal bolts and nuts.
F Directives relatives aux couples de serrage (en Nm) pour les écrous à auto-blocage, les boulons à six et les écrous.
I Linee guida riguardanti i momenti torcenti (espressi in Nm) per dadi autobloccanti, bulloni esagonali e dadi.
DK Retningslinier for momenter (i Nm) for selvlåsende møtrikker, hexagon bolte og møtrikker.

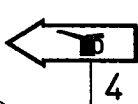
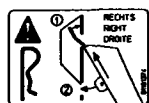
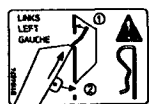
KWALITEIT/QUALITY/QUALITÄT QUALITE/CALIDAD/QUALITÀ/KVALITEIT	4.6		8.8		10.9		12.9	
	0,10	0,13	0,10	0,13	0,10	0,13	0,10	0,13
Wrijving/Friction/Reibung/Frottement/ Fricción/Frizione/Friktion*								
Schroefdraad/Thread/Gewinde/Filetage Rosca/Filettatura/Gänga/Størrelse								
M5	1,7	2	5	6	7	9	8	10
M6	3	4	9	10	13	15	15	18
M8	8	9	21	25	31	36	36	42
M10	16	19	40	50	60	70	70	85
M12	27	32	70	85	105	120	120	145
M14	42	50	115	135	165	195	195	230
M16	65	76	175	210	260	300	300	350
M18	90	110	250	290	350	420	410	490
M20	125	150	350	420	500	600	580	700
M22	170	200	470	560	670	800	780	930
M24	210	250	600	710	860	1020	1000	1180

- * **NL** De wrijvingscoëfficiënt van 0,10 geldt voor geoliede plaat, gietijzer, geharde vlakken, vette schroefdraad, etc. De hogere waarde van 0,13 geldt voor een droge plaat. Uitzonderingen op deze tabel zijn vermeld in het onderdeel- en/of instructieboek. Aanhaalmomenten voor bouten en moeren met gekartelde onderkant, zoals Tensilock en Whizlock, 10% extra.
- * **GB** The friction coefficient of 0.10 applies to oiled sheet, cast iron, hardened surfaces, greasy thread, etc. The higher value of 0.13 applies to dry sheet. Exceptions to this table are stated in the parts- and/or instruction manual. Torques for bolts and nuts with a knurled underside, like Tensilock and Whizlock, 10% extra.
- * **D** Der Reibungskoeffizient von 0,10 gilt für geölte Flächen, Gußeisen, gehärtete Flächen, gefettetes Gewinde usw. Der höhere Wert von 0,13 gilt für trockene Flächen. Ausnahmen zu dieser Tabelle sind im Ersatzteilhaft und/oder in der Betriebsanleitung. Anzugsmomente für Schrauben und Muttern mit gerändelter Unterseite, wie Tensilock und Whizlock, zuzüglich 10% extra.
- * **F** Le coefficient de frottement de 0,10 s'applique aux surfaces huilées, à la fonte, aux surfaces trempées, aux filetages graissés etc. Le coefficient de 0,13 aux surfaces sèches. Les exceptions à ce tableau sont mentionnées dans la nomenclature des pièces et/ou dans le manuel d'emploi. Ajoutez 10% pour les boulons et écrous à partie inférieure crénelée, comme les Tensilock et les Whizlock.
- * **ES** El coeficiente de fricción de 0,10 es indicado para planchas lubricadas, hierro fundido, superficies endurecidas, rosca grasienta, etc. El valor más alto de 0,13 es para planchas secas. Las excepciones a este cuadro se mencionan en el libro de repuestos y/o manual de instrucciones. Los pares de apriete para tornillos y tuercas con cara inferior dentada, como los Tensilock y Whizlock, 10% extra.
- * **I** Il coefficiente di frizione pari a 0,10 si riferisce a superfici oliate, alla ghisa, a superfici temprate, a filettature spesse ecc. Il valore più alto, pari a 0,13, si riferisce a superfici asciutte. Tutte le eccezioni a quanto riportato in questa tabella, si trovano nel libretto dei pezzi o nel libretto delle istruzioni. I momenti torcenti per bulloni e dadi la cui parte inferiore è zigrinata, come i Tensilock (K 100) e Whizlock, sono superiori del 10%.
- * **S** Friktionskoefficienten 0,10 gäller oljad plåt, gjutjärn, härdade ytor, smorda gängor etc. Det högre värdet 0,13 gäller torr plåt. Undantag från denna tabell anges i reservdels- och/eller instruktionsboken. Åtdragningsmoment för räfflade bultar och muttrar, som Tensilock och Whizlock 10% extra.
- * **DK** Friktionskoefficienten på 0,10 gælder for smurte flader, støbejern, hærdeede overflader, fedtholdige gevind etc. Den højere værdi på 0,13 gælder for tørre flader. Undtagelser til tabellen er angivet i reservedels- og/eller instruktionsbog. Når det drejer sig om momenter for bolte og møtrikker med en riflet underside, som Tensilock (K100) og Whizlock, skal der tilføjes 10% ekstra.

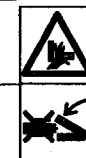
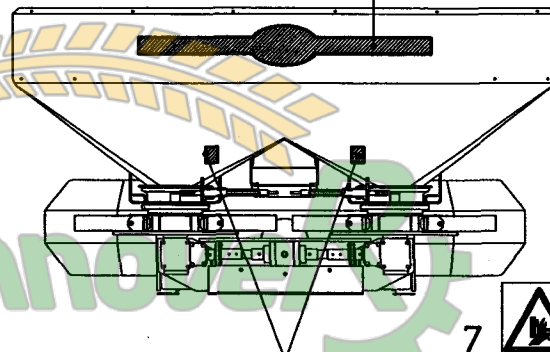
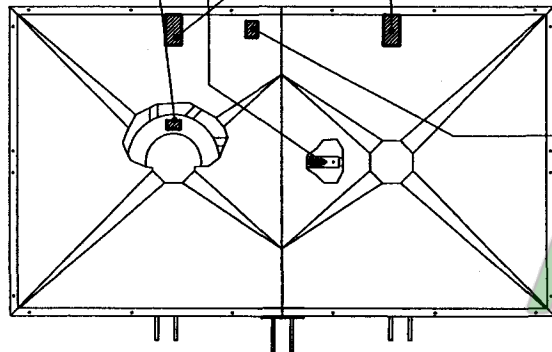
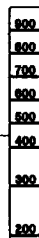
serial number 77151

C16

RS-M 1050/1700



22

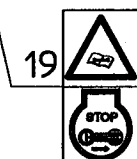


21

Агро
Заказання запчастин
407-68-47
(050)-407-68-45



16

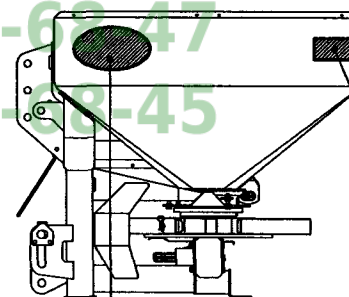


19

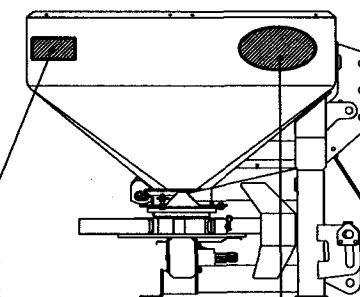
3
Max. laadvermogen
Max. load capacity
Max. nutzlast
Chargement max.
1600 KG

bestelnummer
ordernumber
num. a commander
Bestellnummer

1	B1194874	1
2	B1181374	1
3	B1825674	1
4	90090191	2
5	B2071674	2
6	B2834474	1
7	TR2059	2
8	TR1010	2
9	TR2039	1
16	B0903374	1
17	TR2015	1
18	TR2011	1
19	TR2005	1
20	TR2023	1
21	B1310474	1
22	B2778974	2



5

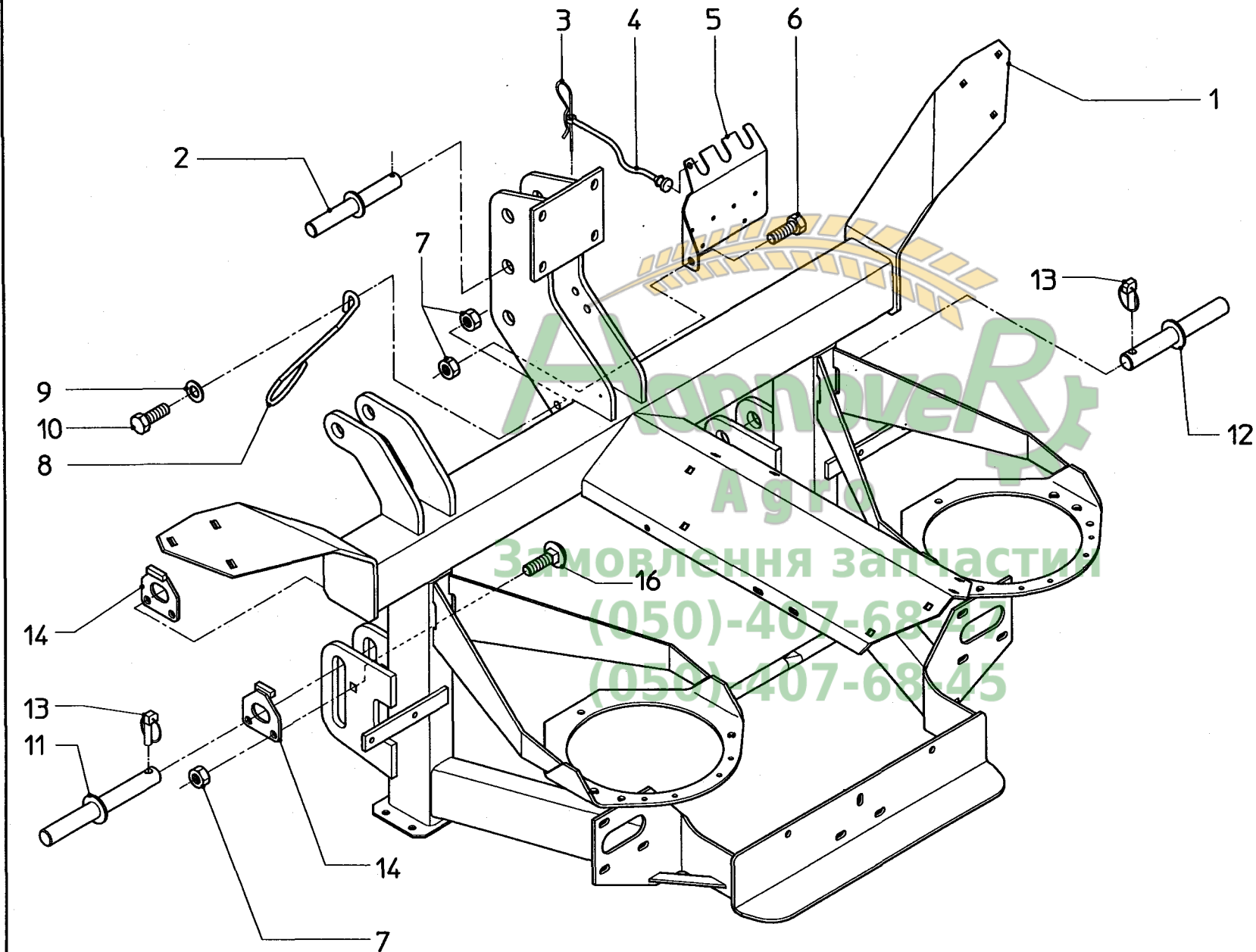


8



5





	bestelnummer ordernumber num. a commander Bestellnummer		
1	B2712786	1	
2	B1599786	1	
3	B0897393	1	
4	B0870178	1	
5	B1665294	1	
6	30121230	1	M12x30/RVS
7	30125120	4	M12/RVS/Nyloc
8	B1307394	1	
9	30111250	1	13/RVS
10	30121240	1	M12x40/RVS
11	B1599886	1	
12	B1599986	1	
13	B0765193	2	
14	B2057986	2	
16	30119230	2	M12x30/RVS

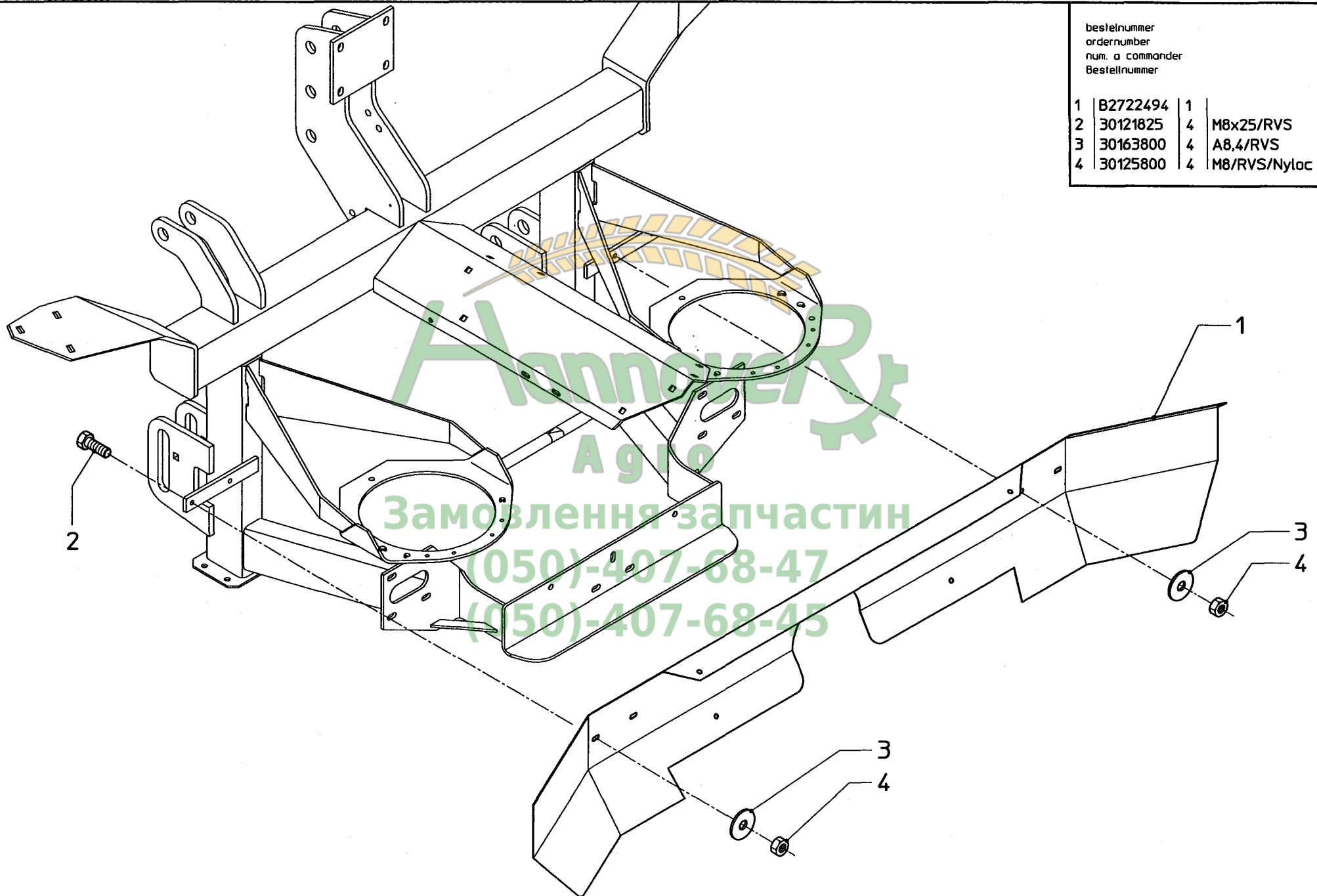
serial number 77151

D2

RS-M 1050/1700

bestelnummer
ordernumber
num. a commander
Bestellnummer

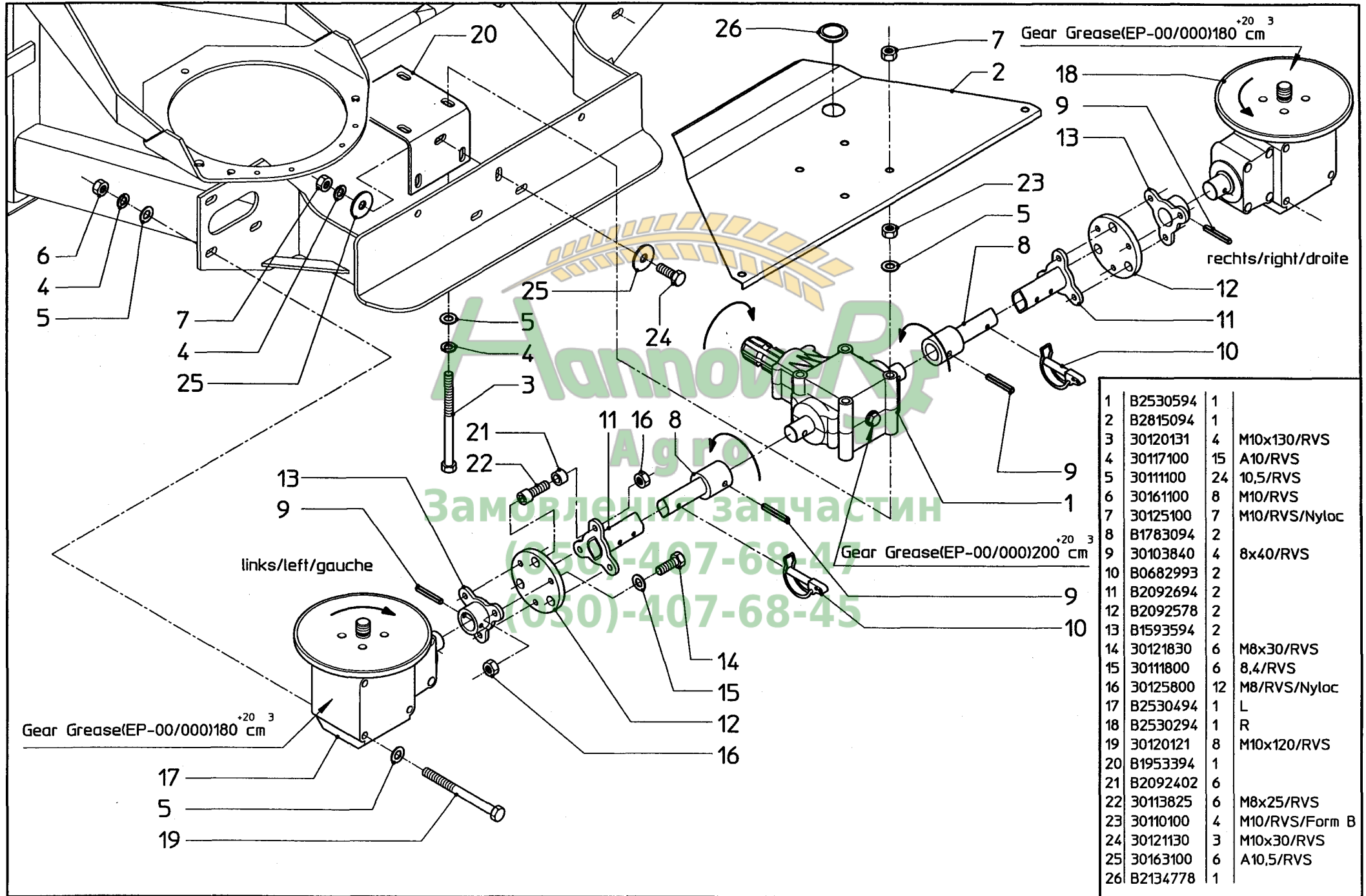
1	B2722494	1	
2	30121825	4	M8x25/RVS
3	30163800	4	A8,4/RVS
4	30125800	4	M8/RVS/Nyloc



serial number 77151

D3

RS-M 1050/1700



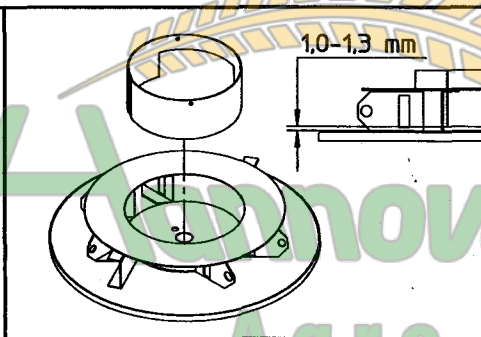
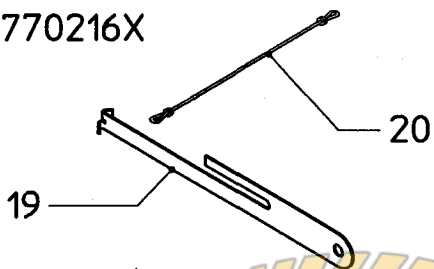
1	B2530594	1	
2	B2815094	1	
3	30120131	4	M10x130/RVS
4	30117100	15	A10/RVS
5	30111100	24	10,5/RVS
6	30161100	8	M10/RVS
7	30125100	7	M10/RVS/Nyloc
8	B1783094	2	
9	30103840	4	8x40/RVS
10	B0682993	2	
11	B2092694	2	
12	B2092578	2	
13	B1593594	2	
14	30121830	6	M8x30/RVS
15	30111800	6	8,4/RVS
16	30125800	12	M8/RVS/Nyloc
17	B2530494	1	L
18	B2530294	1	R
19	30120121	8	M10x120/RVS
20	B1953394	1	
21	B2092402	6	
22	30113825	6	M8x25/RVS
23	30110100	4	M10/RVS/Form B
24	30121130	3	M10x30/RVS
25	30163100	6	A10,5/RVS
26	B2134778	1	

serial number 77151

D4

RS-M 1050/1700

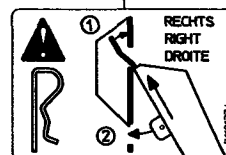
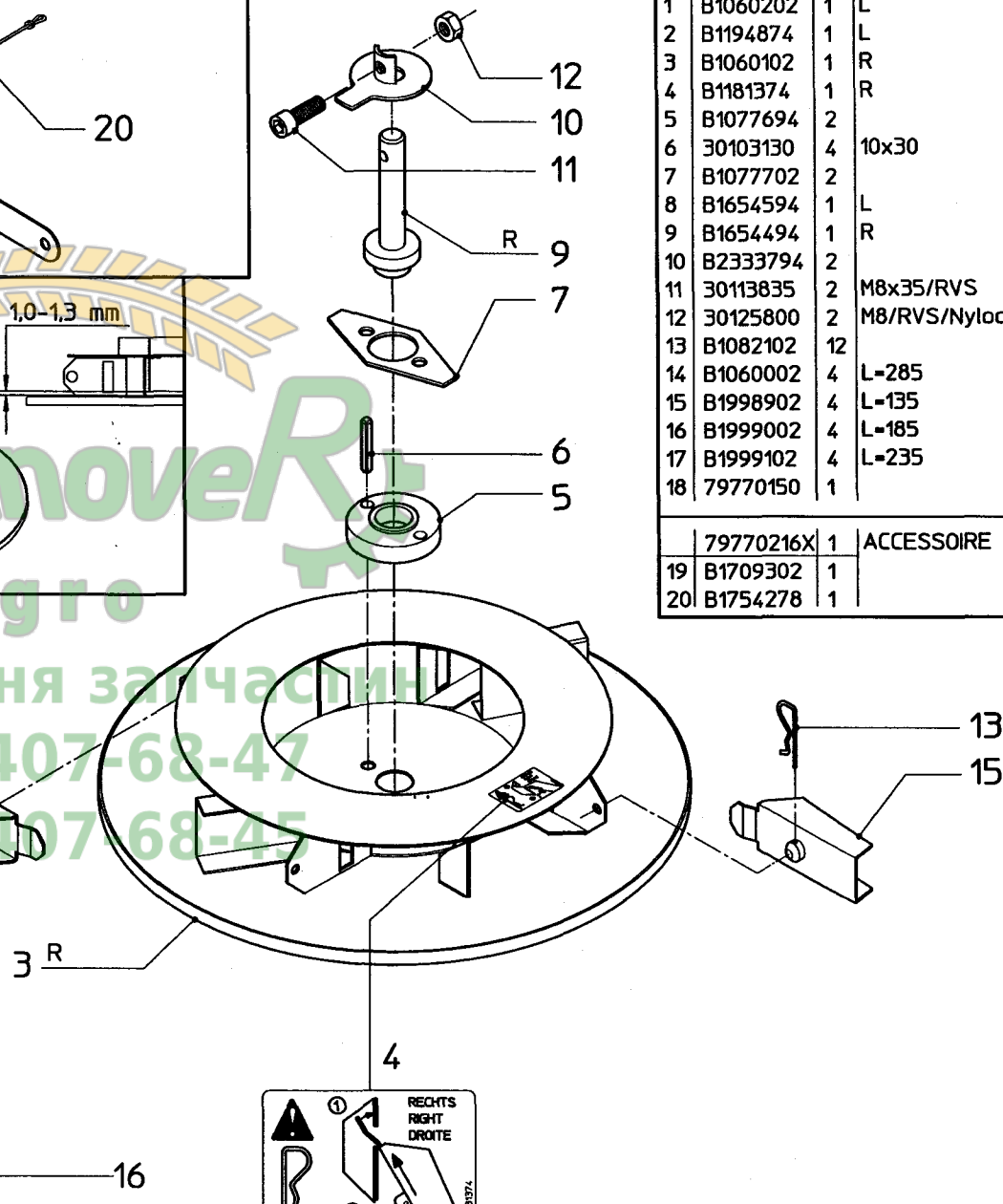
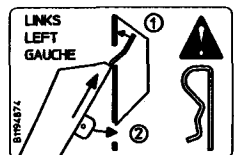
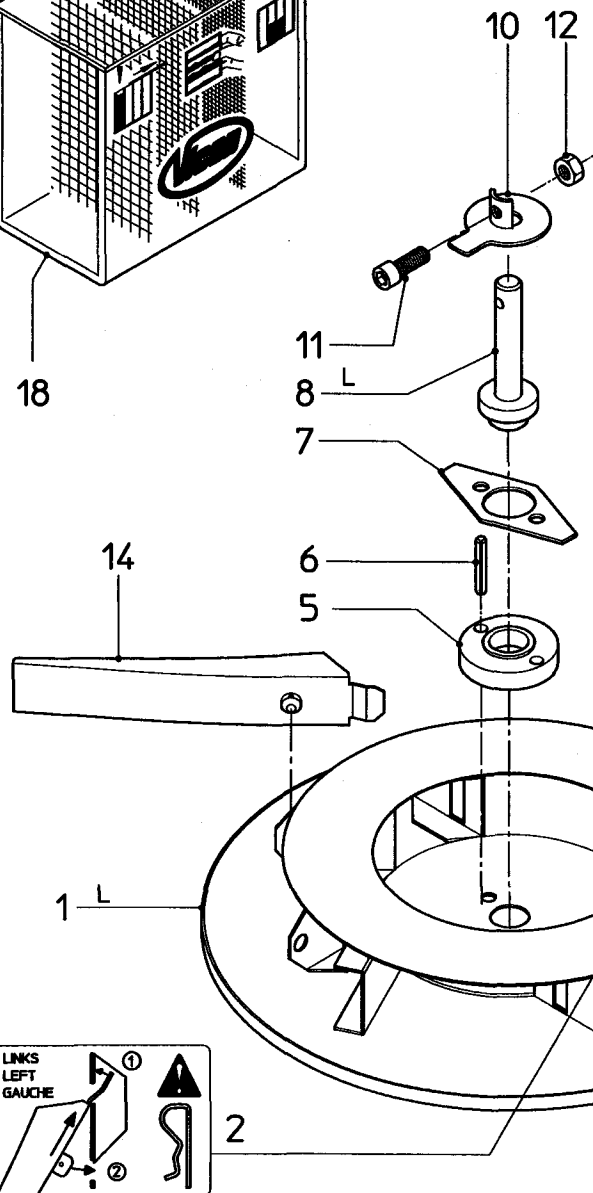
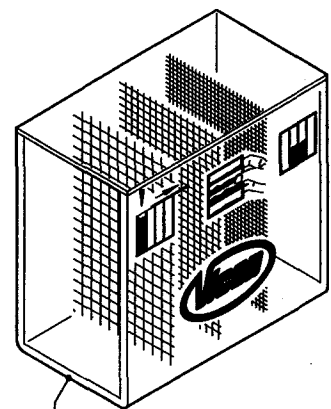
ACCESSOIRE
79770216X



Агро
Замовлення запчастин
(050)-407-68-47
(050)-407-68-45

1	B1060202	1	L
2	B1194874	1	L
3	B1060102	1	R
4	B1181374	1	R
5	B1077694	2	
6	30103130	2	10x30
7	B1077702	2	
8	B1654594	1	L
9	B1654494	1	R
10	B2333794	2	
11	30113835	2	M8x35/RVS
12	30125800	2	M8/RVS/Nylock
13	B1082102	12	
14	B1060002	4	L=285
15	B1998902	4	L=135
16	B1999002	4	L=185
17	B1999102	4	L=235
18	79770150	1	

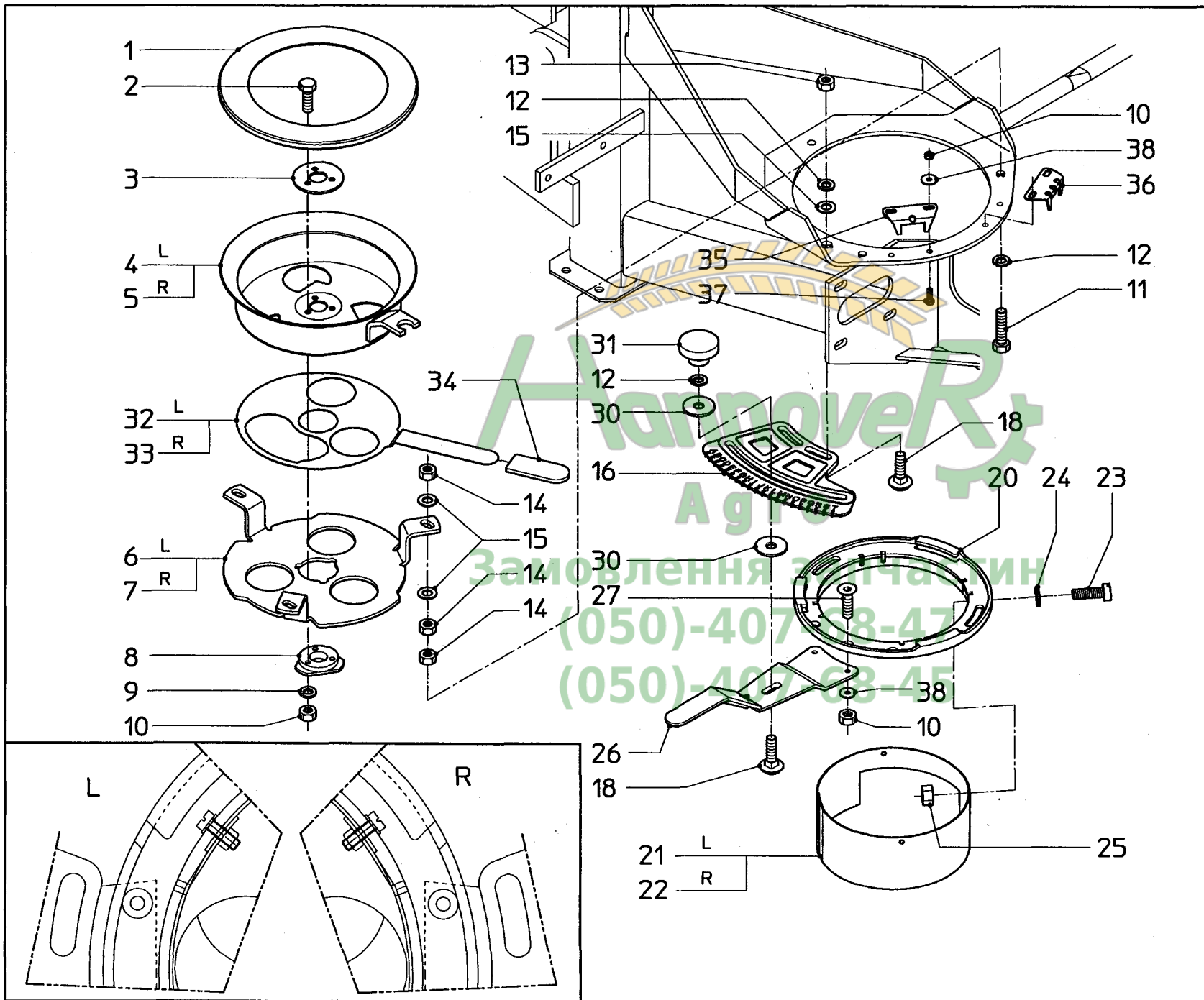
79770216X	1	ACCESSOIRE
19	B1709302	1
20	B1754278	1



serial number 77151

D5

RS-M 1050/1700



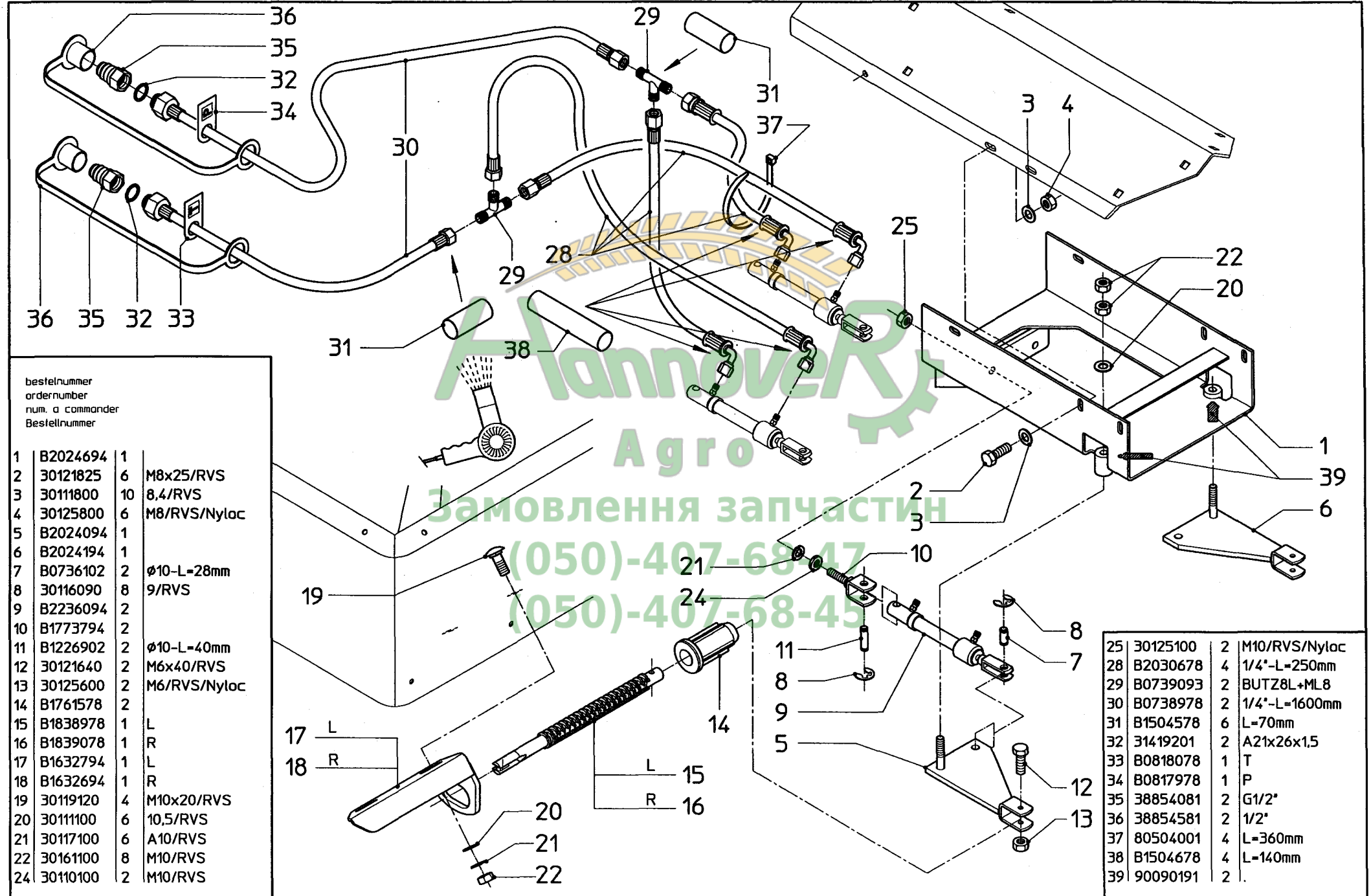
bestelnummer
ordernumber
num. a commander
Bestellnummer

1	B2333878	2	
2	30121625	6	M6x25/RVS
3	B1578794	2	
4	B1578602	1	L
5	B1578502	1	R
6	B1616886	1	L
7	B1616786	1	R
8	B2544278	2	
9	30117600	6	A6/RVS
10	30125600	18	M6/RVS/Nyloc
11	30121150	6	M10x50/RVS
12	30117100	12	A10
13	30161100	4	M10/RVS
14	30110100	18	M10/RVS/Form B
15	30111100	16	10,5/RVS
16	B2068678	2	
18	30119130	6	M10x30/RVS
20	B1617078	2	
21	B1774102	1	L
22	B1774002	1	R
23	30127516	8	M5x16/RVS
24	30111500	8	5,3/RVS
25	30125500	8	M5/RVS/Nyloc
26	B2068578	2	
27	30126616	4	M6x16/RVS
30	30163100	4	A10/RVS
31	17856588	2	
32	B2544402	1	L
33	B2544502	1	R
34	B2544378	2	
35	B2544102	2	L
36	B2544002	2	R
37	30121616	8	M6x16/RVS
38	30163600	12	A6,4/RVS

serial number 77151

D8

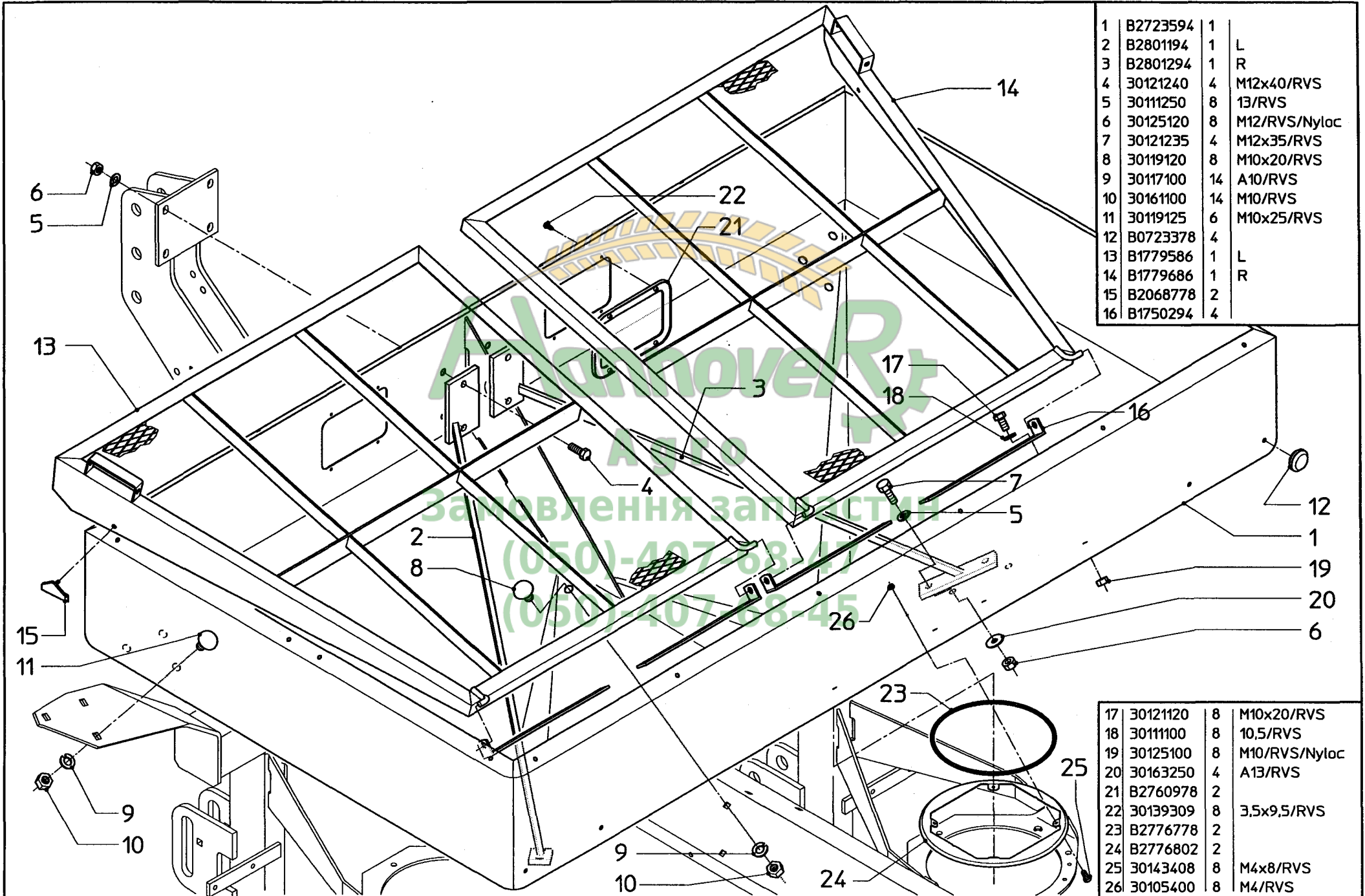
RS-M 1050/1700



serial number 77151

D7

RS-M 1050/1700



1	B2723594	1	
2	B2801194	1	L
3	B2801294	1	R
4	30121240	4	M12x40/RVS
5	30111250	8	13/RVS
6	30125120	8	M12/RVS/Nyloc
7	30121235	4	M12x35/RVS
8	30119120	8	M10x20/RVS
9	30117100	14	A10/RVS
10	30161100	14	M10/RVS
11	30119125	6	M10x25/RVS
12	B0723378	4	
13	B1779586	1	L
14	B1779686	1	R
15	B2068778	2	
16	B1750294	4	

17	30121120	8	M10x20/RVS
18	30111100	8	10,5/RVS
19	30125100	8	M10/RVS/Nyloc
20	30163250	4	A13/RVS
21	B2760978	2	
22	30139309	8	3,5x9,5/RVS
23	B2776778	2	
24	B2776802	2	
25	30143408	8	M4x8/RVS
26	30105400	8	M4/RVS

serial number 77151

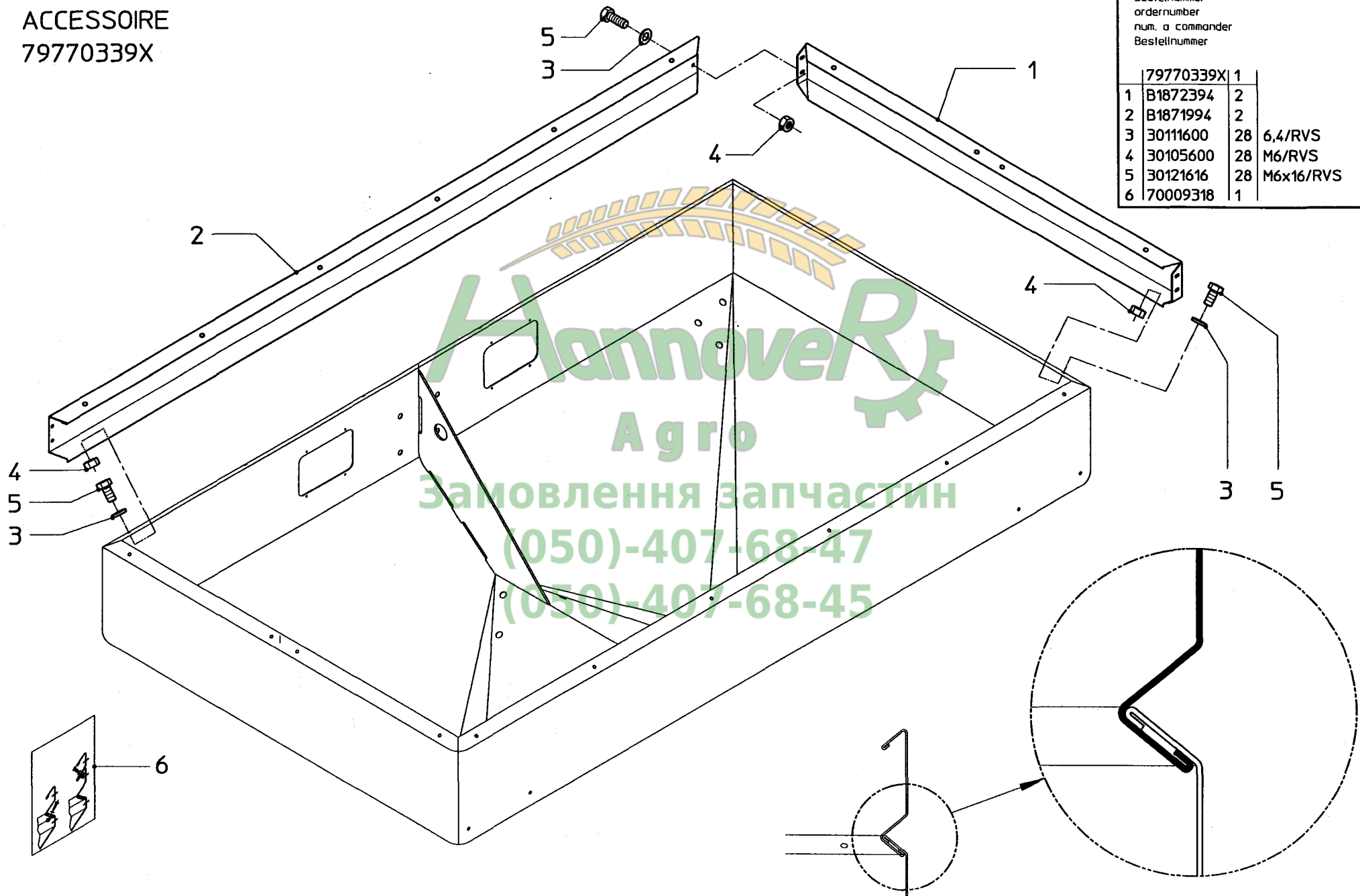
D8

RS-M 1350

ACCESSOIRE
79770339X

bestelnummer
ordernumber
num. o commander
Bestellnummer

79770339X		1
1	B1872394	2
2	B1871994	2
3	30111600	28 6,4/RVS
4	30105600	28 M6/RVS
5	30121616	28 M6x16/RVS
6	70009318	1



serial number 77151

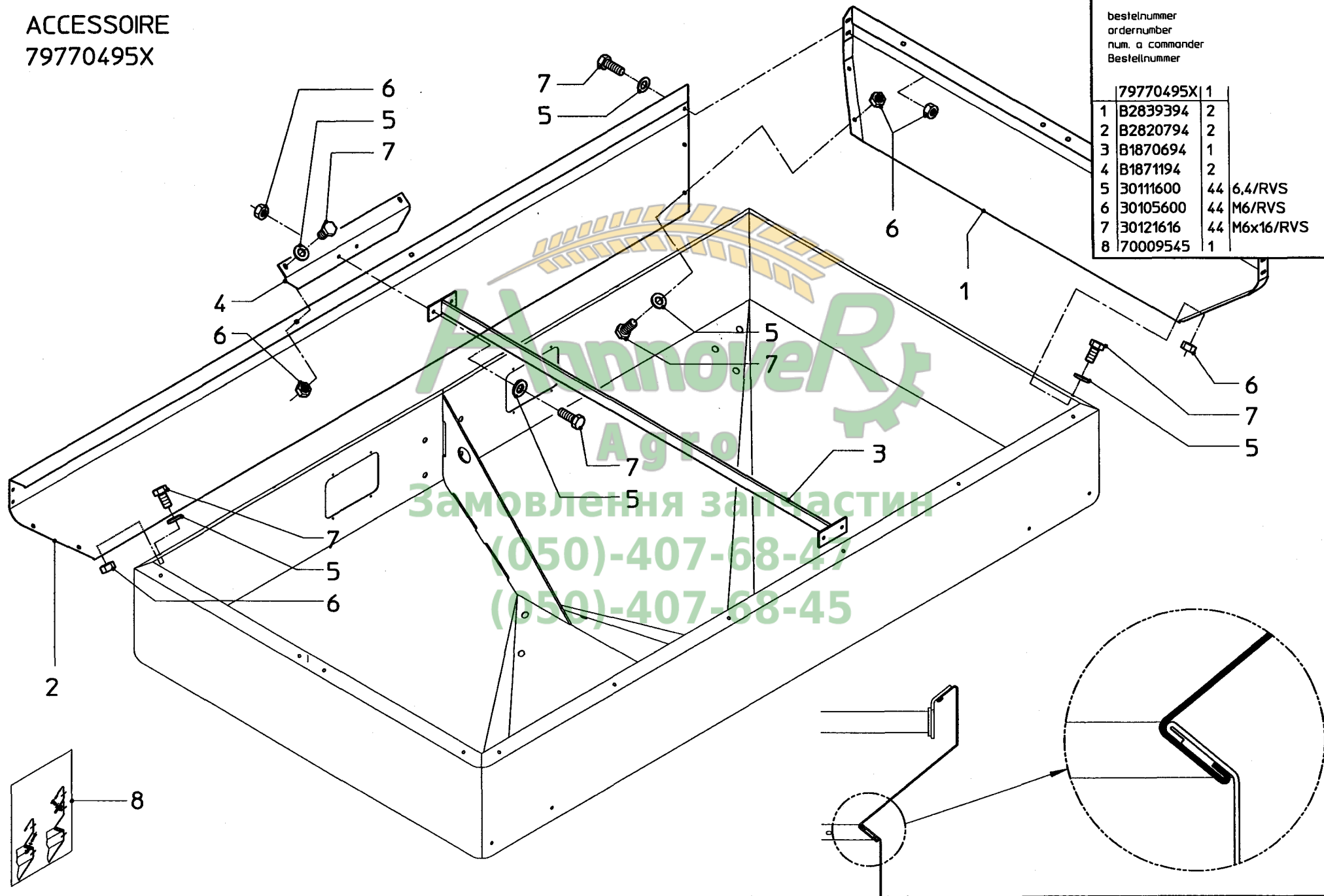
D9

RS-M 1700

ACCESSOIRE
79770495X

bestelnummer
ordernumber
num. a commander
Bestellnummer

79770495X		1
1	B2839394	2
2	B2820794	2
3	B1870694	1
4	B1871194	2
5	30111600	44 6,4/RVS
6	30105600	44 M6/RVS
7	30121616	44 M6x16/RVS
8	70009545	1

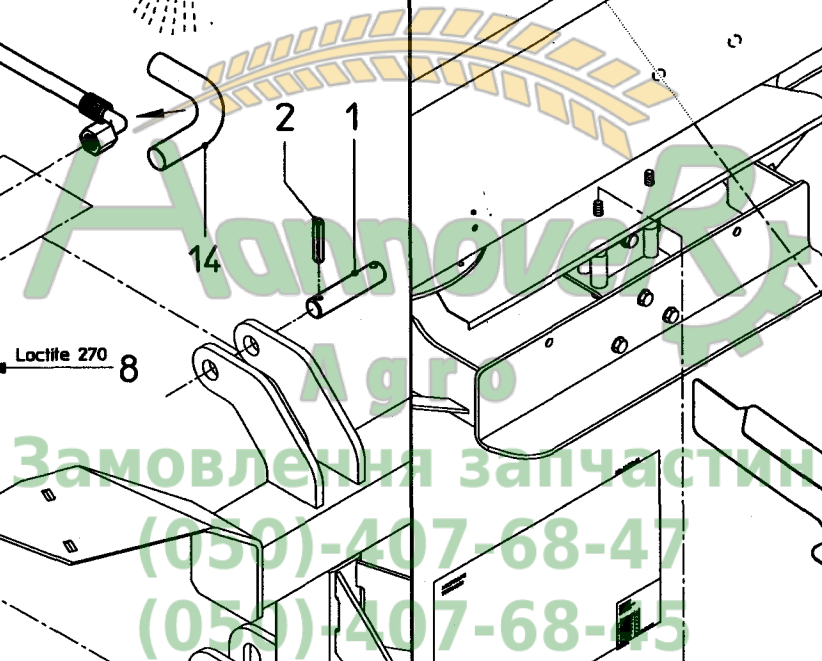
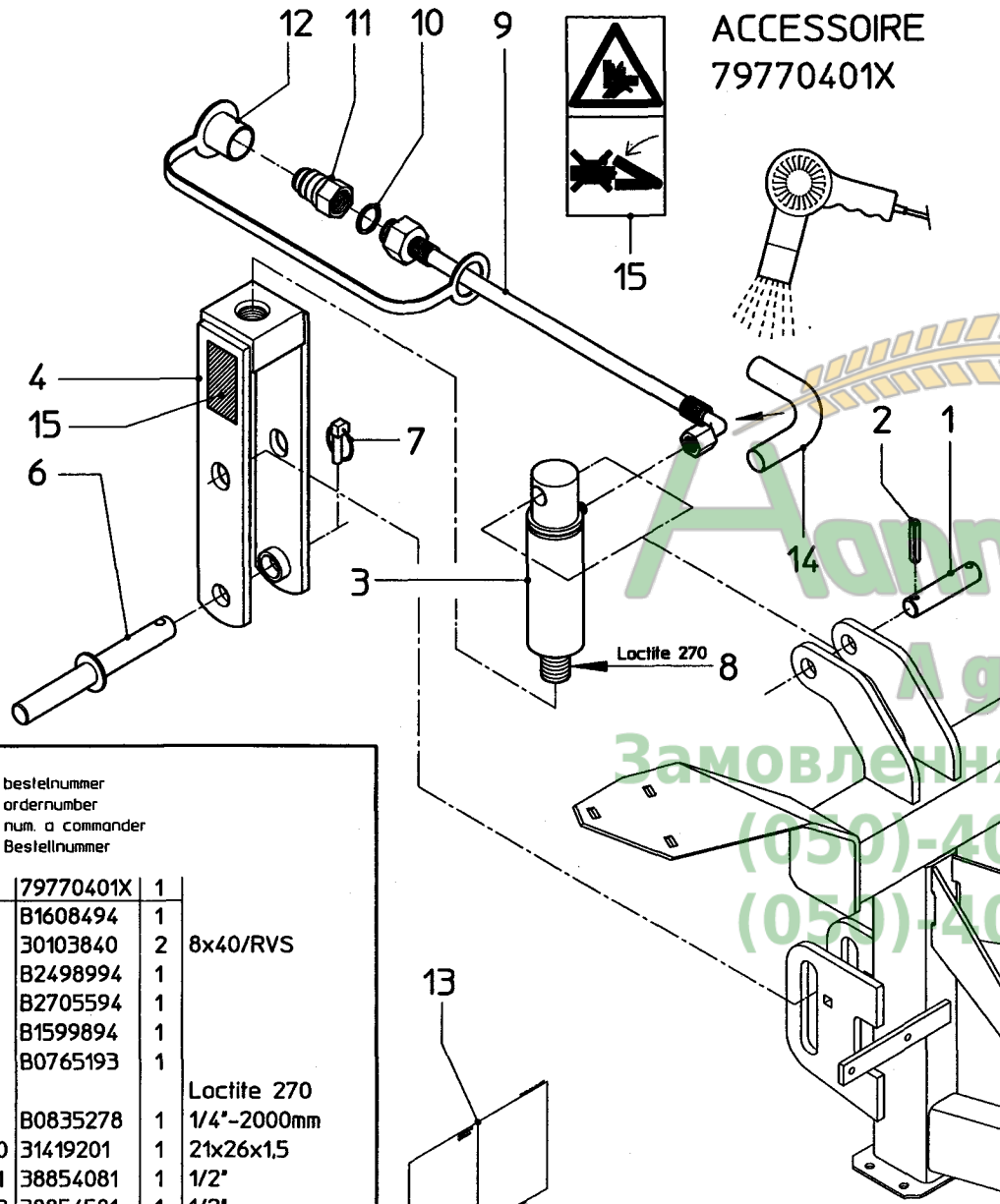
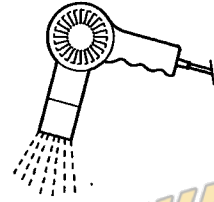


Агрове Р
Замовлення за частини
(050)-407-68-47
(050)-407-68-45

ACCESSOIRE
79770401X

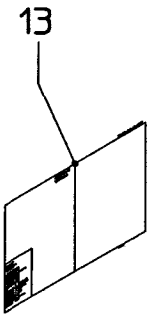


15

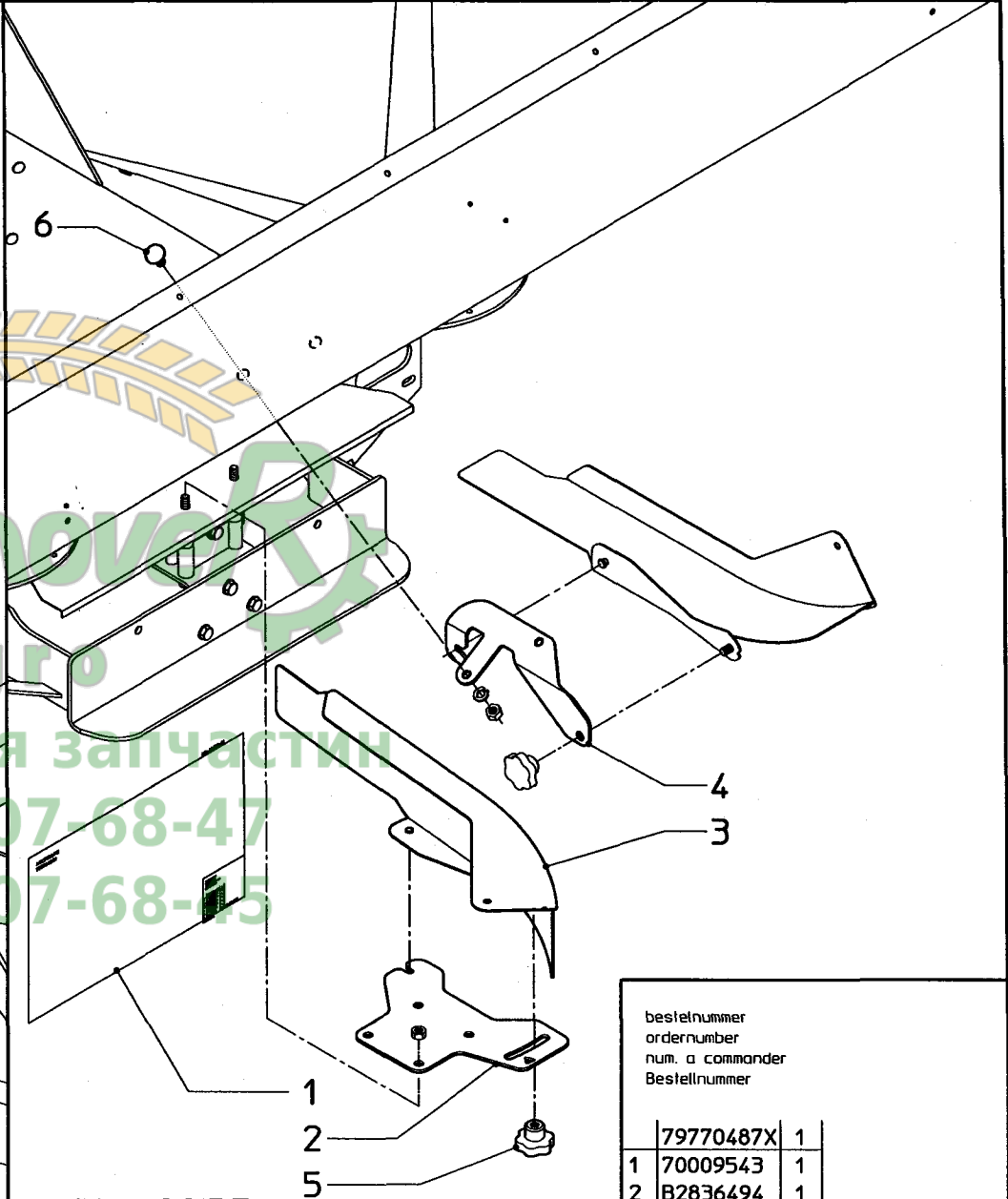


bestelnummer
ordernumber
num. a commander
Bestellnummer

	79770401X	1	
1	B1608494	1	
2	30103840	2	8x40/RVS
3	B2498994	1	
4	B2705594	1	
6	B1599894	1	
7	B0765193	1	
8			Loctite 270
9	B0835278	1	1/4"-2000mm
10	31419201	1	21x26x1,5
11	38854081	1	1/2"
12	38854581	1	1/2"
13	70009499	1	
14	B1504678	1	L=140mm
15	TR2059	1	

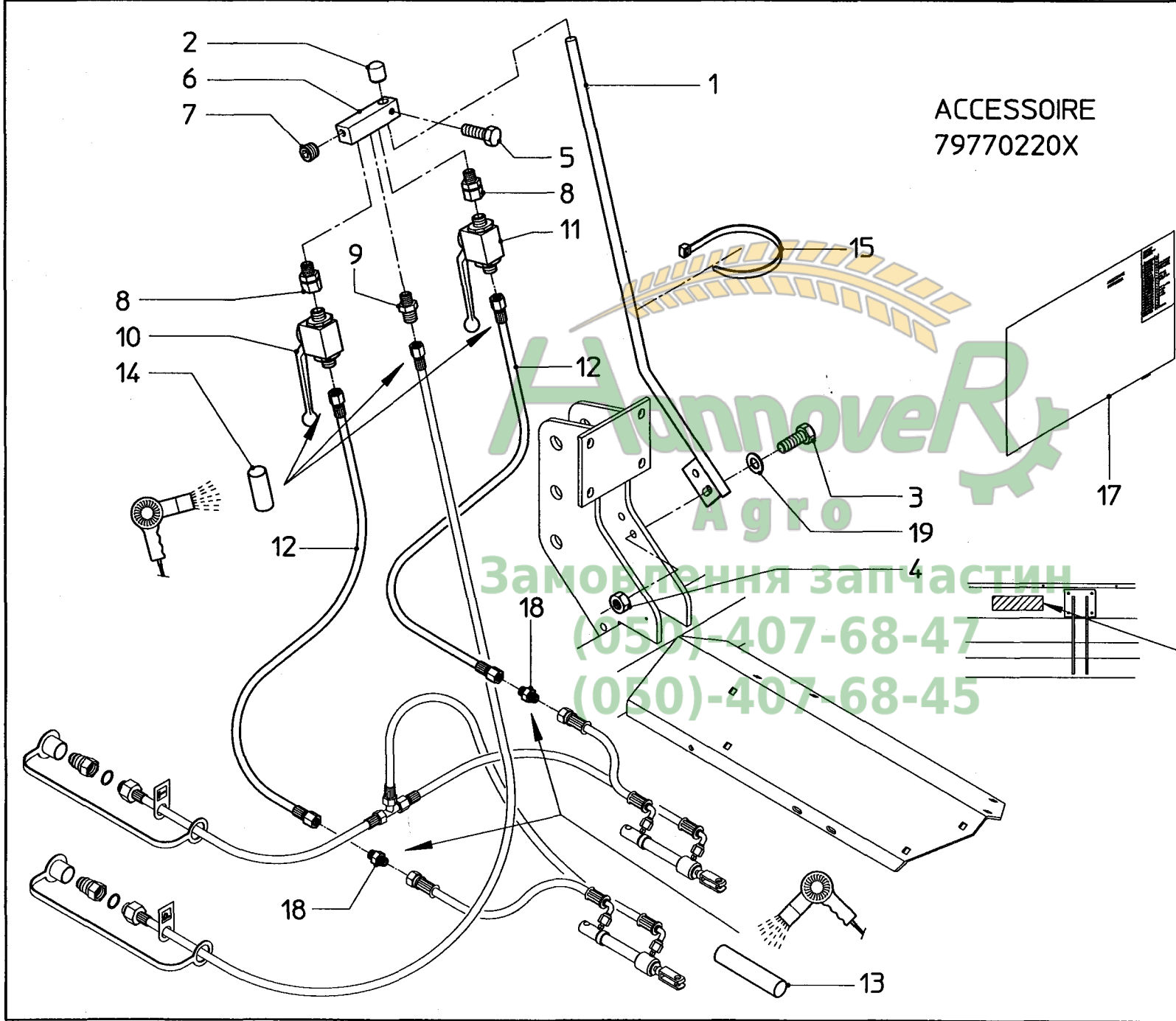


ACCESSOIRE
79770487X



bestelnummer
ordernumber
num. a commander
Bestellnummer

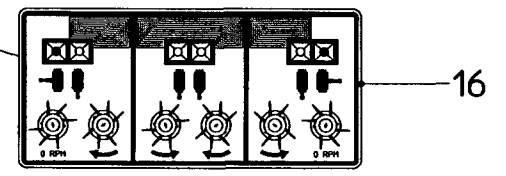
	79770487X	1	
1	70009543	1	
2	B2836494	1	
3	B2836894	1	
4	B2836994	1	
5	17856588	1	
6	30119125	2	M10x25/RVS



ACCESSOIRE
79770220X

bestelnummer		ordernumber		num. a commander		Bestellnummer	
	79770220X	1					
1	B1840194	1					
2	B0854378	1					
3	30121235	2	M12x35/RVS				
4	30598012	2	K10/M12/DM				
5	30121116	1	M10x16/RVS				
6	B1308693	1					
7	38202200	1	M12x1,5				
8	38820225	2	RAL 8M				
9	38820194	1	S-GEV 8LM				
10	17895704	1					
11	17895703	1					
12	B1797478	2	1/4"-L=1250				
13	B1504678	2	L=140				
14	B1504578	3	L=70				
15	80504001	4	L=360				
16	B1727574	1					
17	70009207	1					
18	B0854293	2					
19	30111250	2	13/RVS				

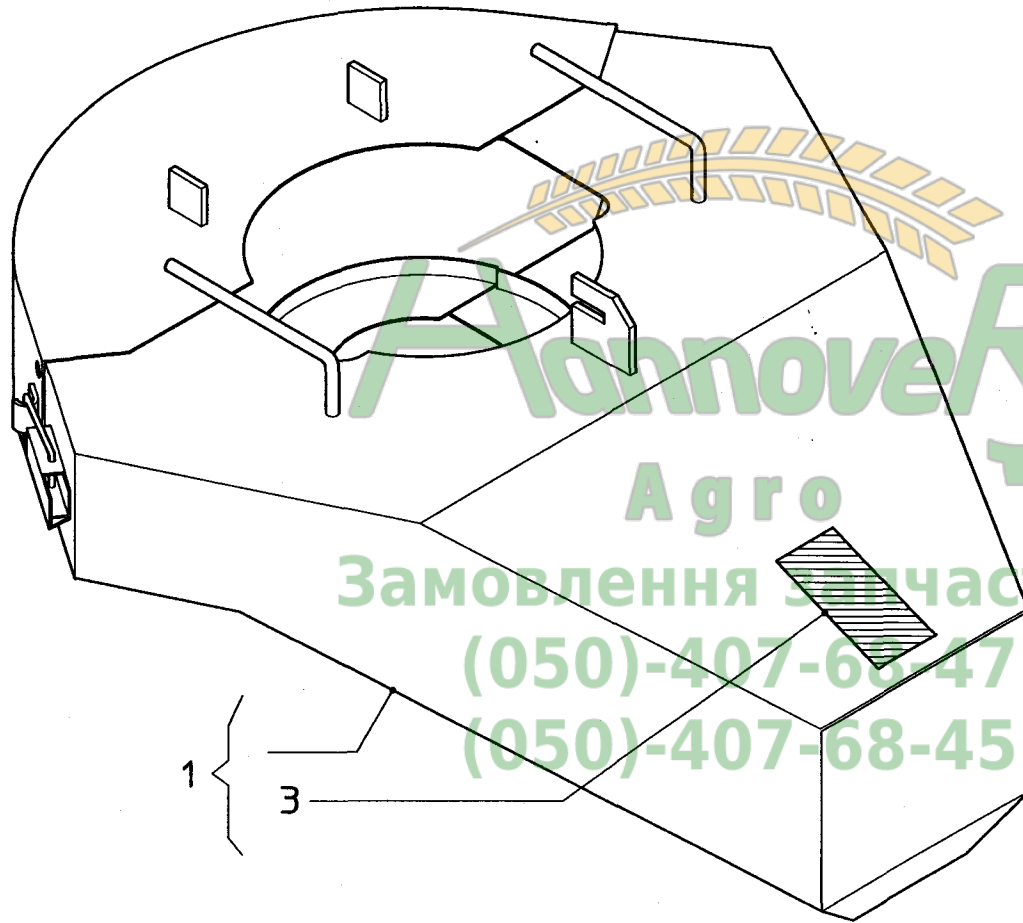
Замовлення запчастин
(050)-407-68-47
(050)-407-68-45



ACCESSOIRE

bestelnummer
ordernumber
num. a commander
Bestelnummer

1	B1885578	1
3	TR2023	1



АгровеР
Агро
Замовлення запчастин
(050)-407-68-47
(050)-407-68-45

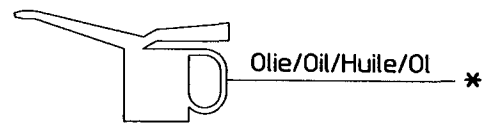
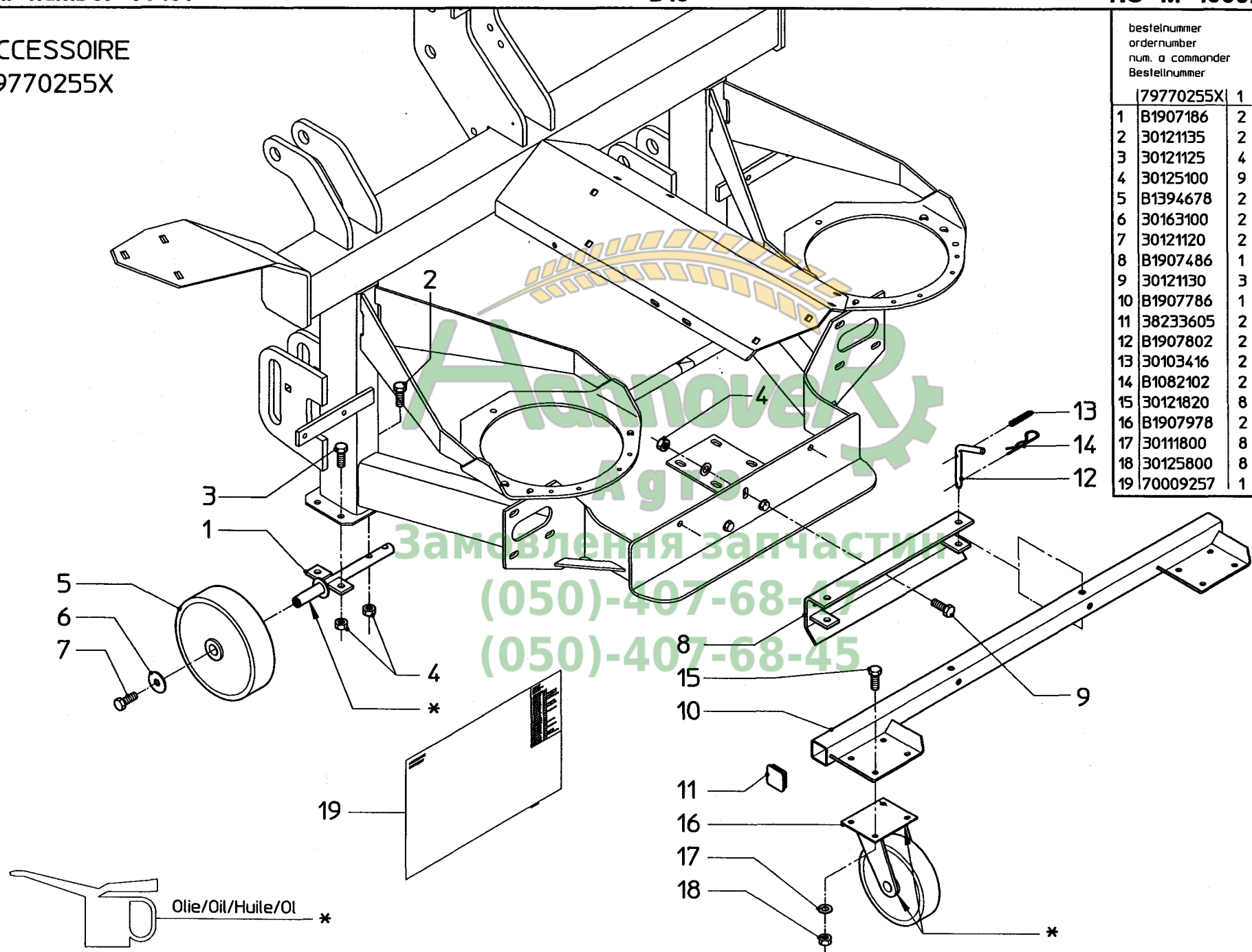
serial number 77151

D13

RS-M 1050/1700

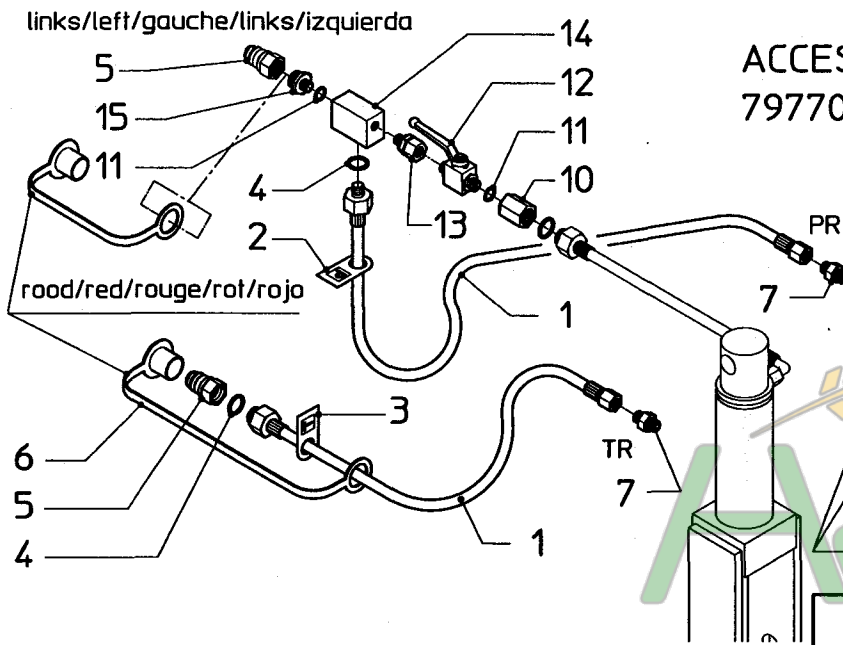
ACCESSOIRE
79770255X

bestelnummer		ordernumber		num. a commander		Bestellnummer	
79770255X		1					
1	B1907186	2					
2	30121135	2	M10x35/RVS				
3	30121125	4	M10x25/RVS				
4	30125100	9	M10/RVS/Nylac				
5	B1394678	2					
6	30163100	2	A10,5/RVS				
7	30121120	2	M10x20/RVS				
8	B1907486	1					
9	30121130	3	M10x30/RVS				
10	B1907786	1					
11	38233605	2					
12	B1907802	2					
13	30103416	2	4x16/RVS				
14	B1082102	2					
15	30121820	8	M8x20/RVS				
16	B1907978	2					
17	30111800	8	8,4/RVS				
18	30125800	8	M8/RVS/Nylac				
19	70009257	1					

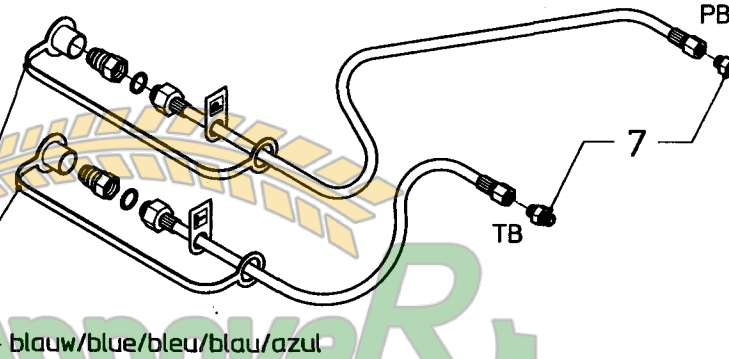


Замовлення запчастин
(050)-407-68-45
(050)-407-68-45

ACCESSOIRE
79770392X

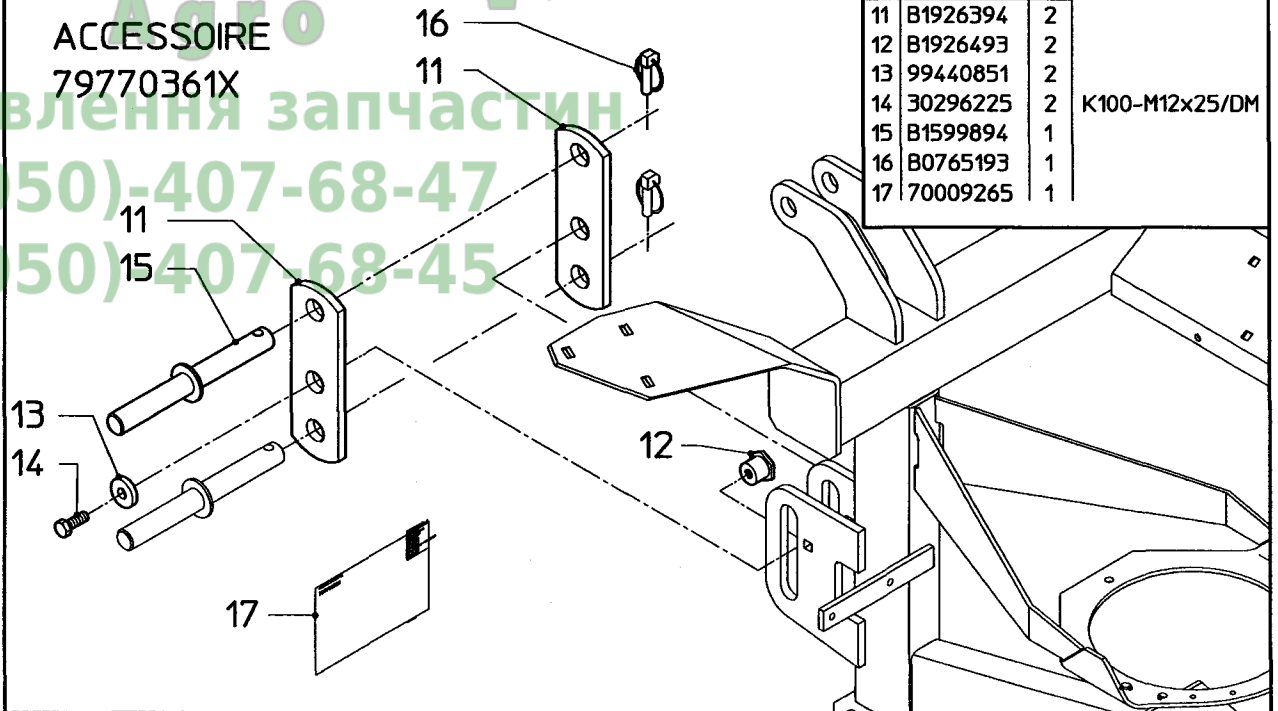
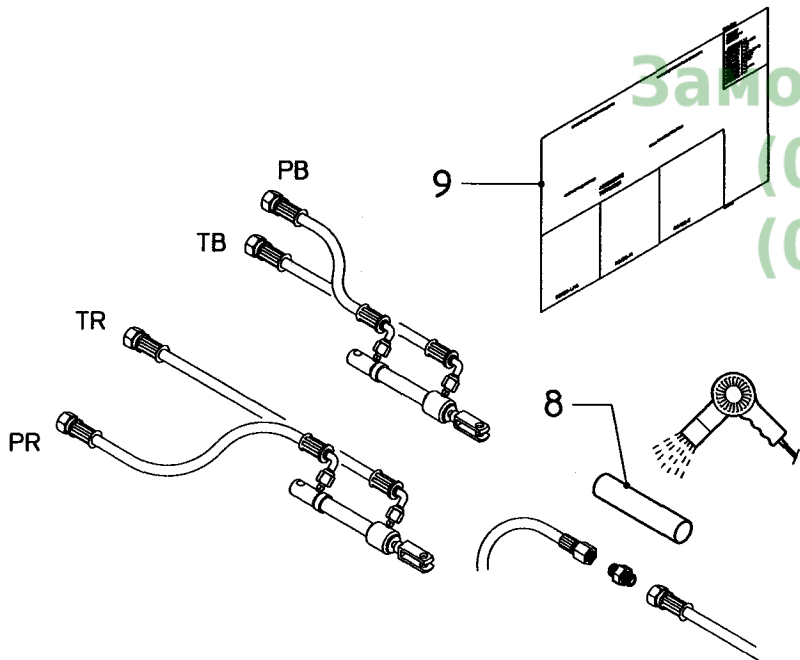


rechts/right/droite/rechts/derecha



79770392X		1
1	B0738978	2 L=1600
2	B0817978	1 P
3	B0818078	1 T
4	31419201	2 A21x26x1,5
5	38854081	2 G1/2"
6	38854586	2 1/2"
7	B0854293	4
8	B1504678	4 L=140
9	70009483	1
10	B3084193	1 G1/2"-M14x1,5
11	31419900	2 A14x18x1,5
12	17895704	1
13	38820225	1 RAL-8M
14	B3083893	1 G1/2"-M14-M12
15	B1306893	1 G1/2"-M14x1,5

ACCESSOIRE
79770361X

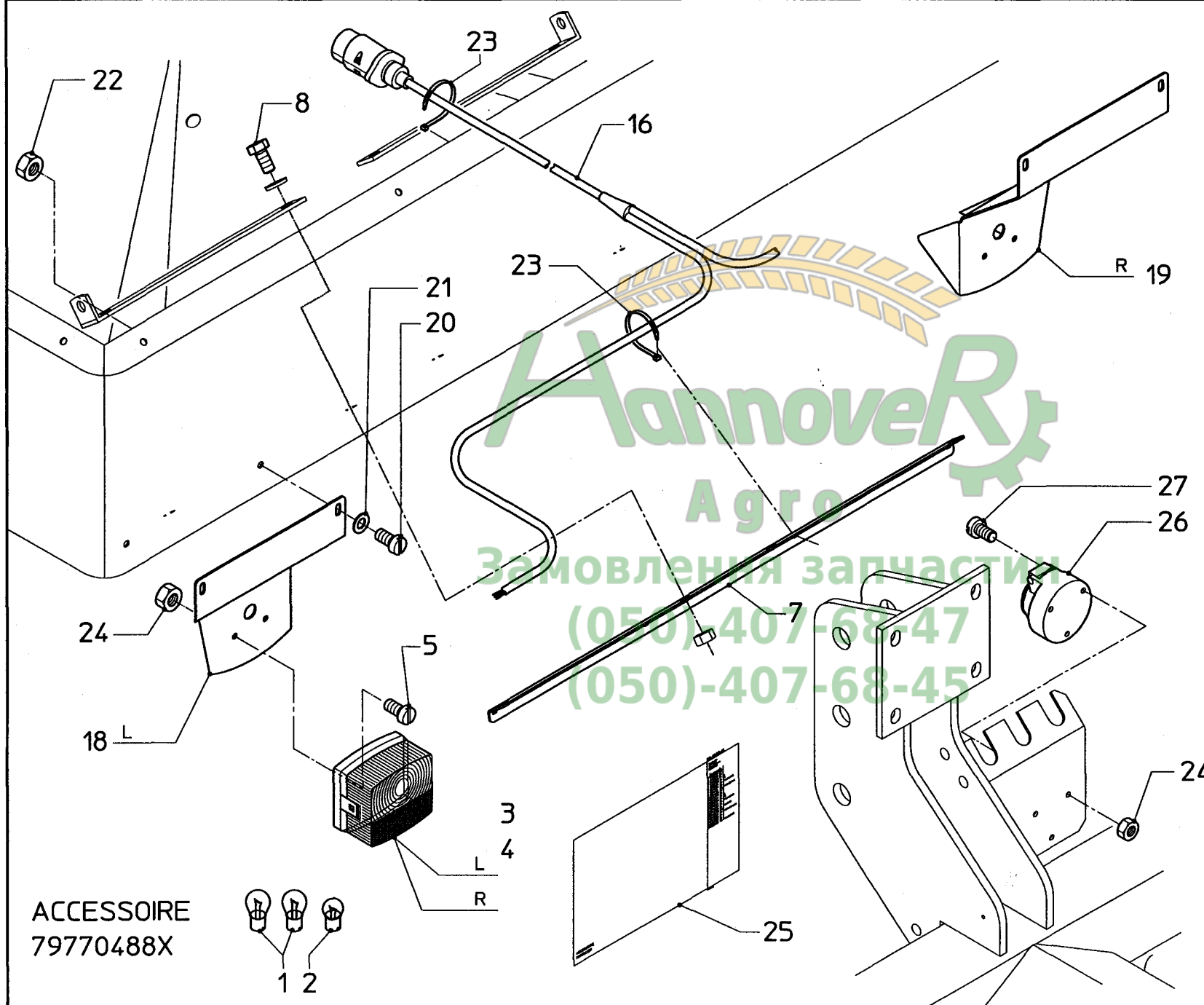


79770361X		1
11	B1926394	2
12	B1926493	2
13	99440851	2
14	30296225	2 K100-M12x25/DM
15	B1599894	1
16	B0765193	1
17	70009265	1

serial number 77151

D15

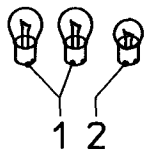
RS-M 1050/1700



bestelnummer
ordernumber
num. a commander
Bestellnummer

79770488X		1
1	48523002	4
2	48523001	2
3	48520009	1
4	48520005	1
5	30127516	4
7	B2722194	2
8	30121125	8
16	B1896878	1
18	B2831494	1
19	B2831594	1
20	30127616	4
21	30163600	4
22	30105600	4
23	80504003	12
24	30125500	7
25	70009542	1
26	B0341273	1
27	30127535	3

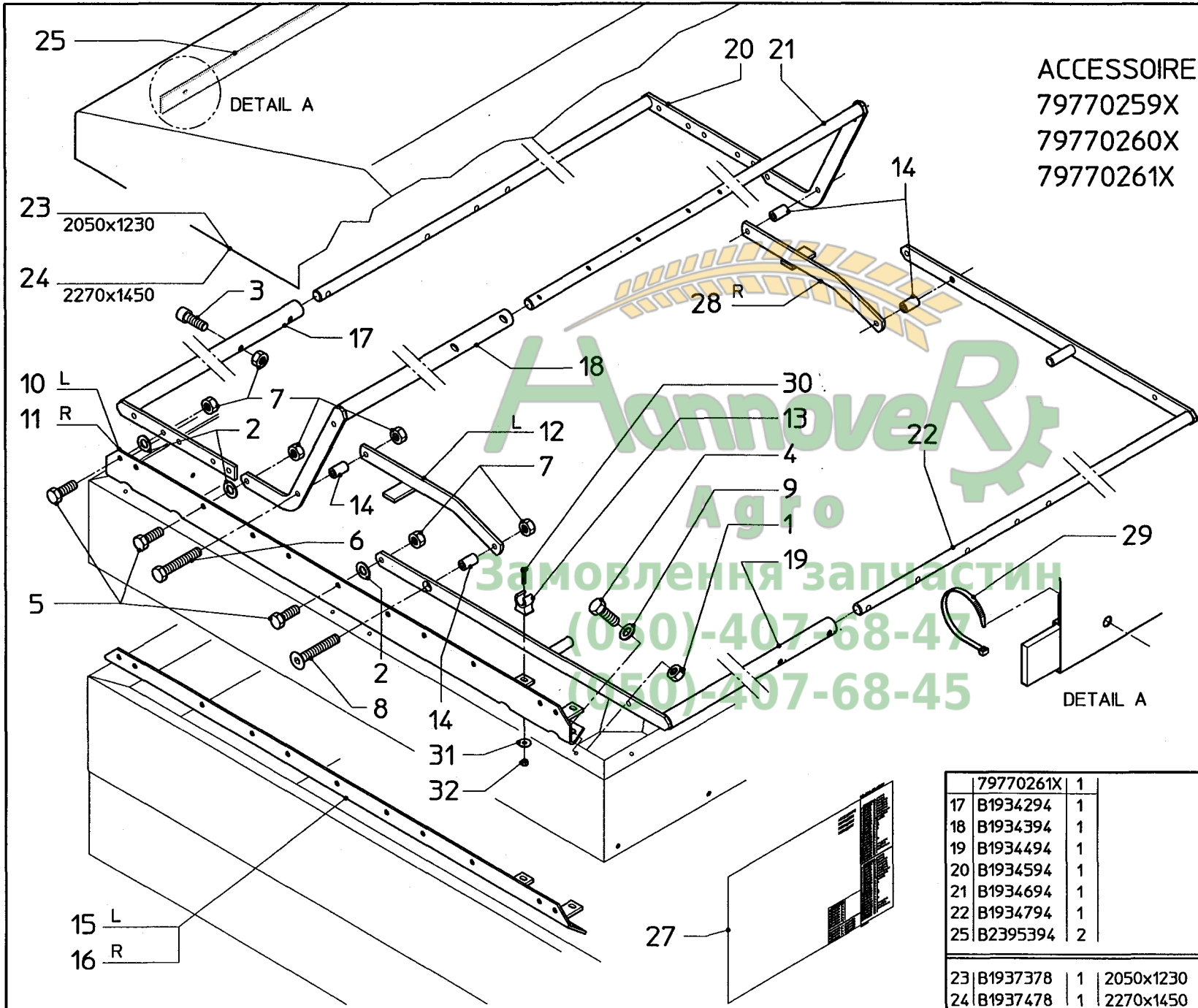
ACCESSOIRE
79770488X



serial number 77151

D16

RS-M 1050/1700



ACCESSOIRE
79770259X
79770260X
79770261X

79770259X		1
1	30105600	8 M6/RVS
2	3011800	8 8,4/RVS
3	30113835	6 M8x35/RVS
4	30121616	8 M6x16/RVS
5	30121825	8 M8x25/RVS
6	30121850	2 M8x50/RVS
7	30125800	18 M8/RVS/Nyloc
8	30126850	2 M8x50/RVS
9	30111600	8 6,4/RVS
10	B1933894	1 L
11	B1933994	1 R
12	B1934894	1 L
13	B1935578	2
14	B1936602	4
27	70009280	1
28	B2084694	1 R
29	80504003	4
30	30127420	2 M4x20/RVS
31	30163400	2 A4,3/RVS
32	30125980	2 M4/RVS/Nyloc

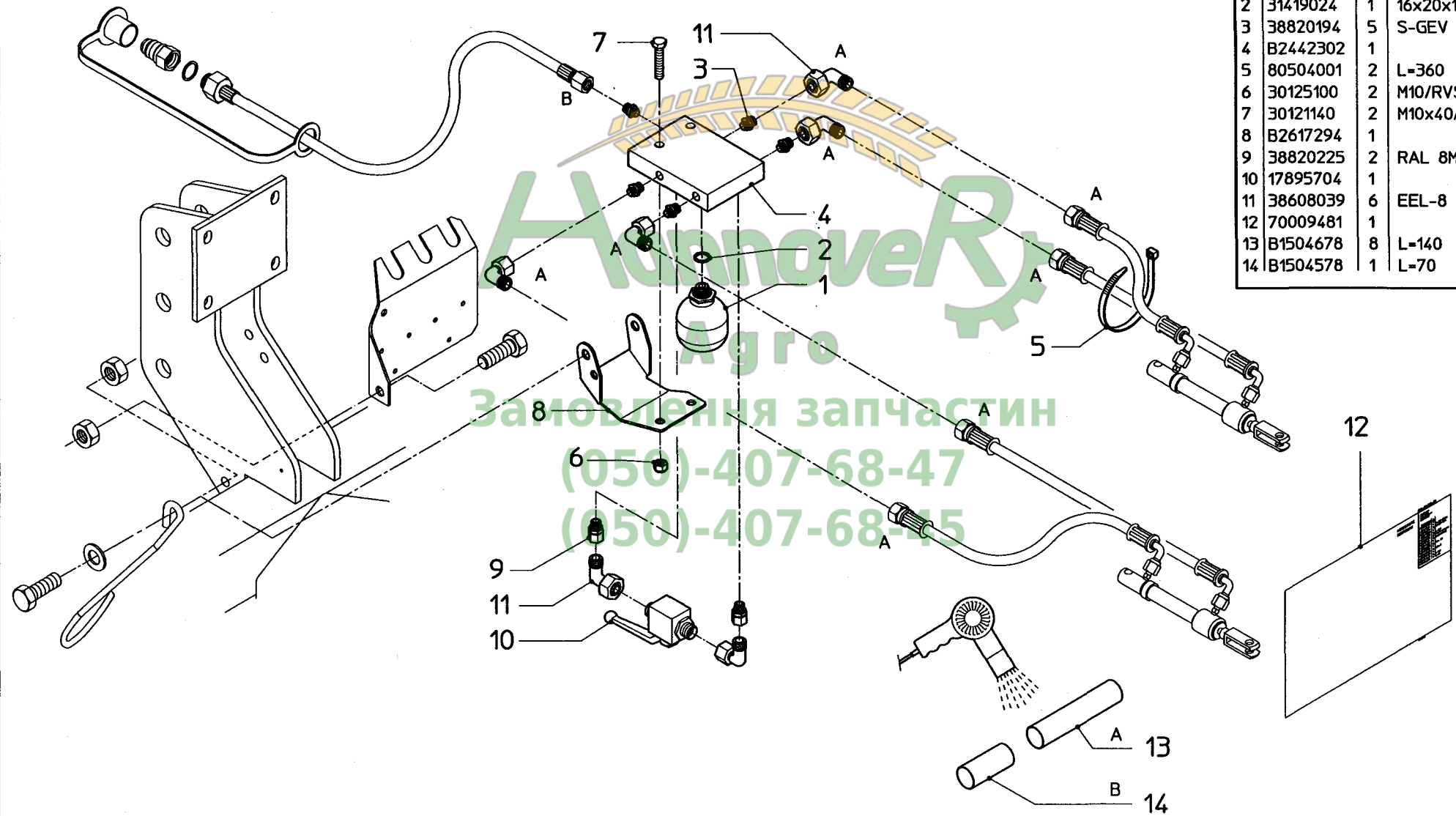
79770260X		1
1	30105600	8 M6/RVS
2	3011800	8 8,4/RVS
3	30113835	6 M8x35/RVS
4	30121616	8 M6x16/RVS
5	30121825	8 M8x25/RVS
6	30121850	2 M8x50/RVS
7	30125800	18 M8/RVS/Nyloc
8	30126850	2 M8x50/RVS
9	30111600	8 6,4/RVS
12	B1934894	1 L
13	B1935578	2
14	B1936602	4
15	B1934094	1 L
16	B1934194	1 R
27	70009280	1
28	B2084694	1 R
29	80504003	4
30	30127420	2 M4x20/RVS
31	30163400	2 A4,3/RVS
32	30125980	2 M4/RVS/Nyloc

79770261X		1
17	B1934294	1
18	B1934394	1
19	B1934494	1
20	B1934594	1
21	B1934694	1
22	B1934794	1
25	B2395394	2

23	B1937378	1	2050x1230
24	B1937478	1	2270x1450

ACCESSOIRE
79770389X

bestelnummer		ordernumber		num. a commander		Bestellnummer	
	79770389X	1					
1	17883776	1					
2	31419024	1	16x20x1,5/CU				
3	38820194	5	S-GEV 8LM				
4	B2442302	1					
5	80504001	2	L=360				
6	30125100	2	M10/RVS/Nylac				
7	30121140	2	M10x40/RVS				
8	B2617294	1					
9	38820225	2	RAL 8M				
10	17895704	1					
11	38608039	6	EEL-8				
12	70009481	1					
13	B1504678	8	L=140				
14	B1504578	1	L=70				

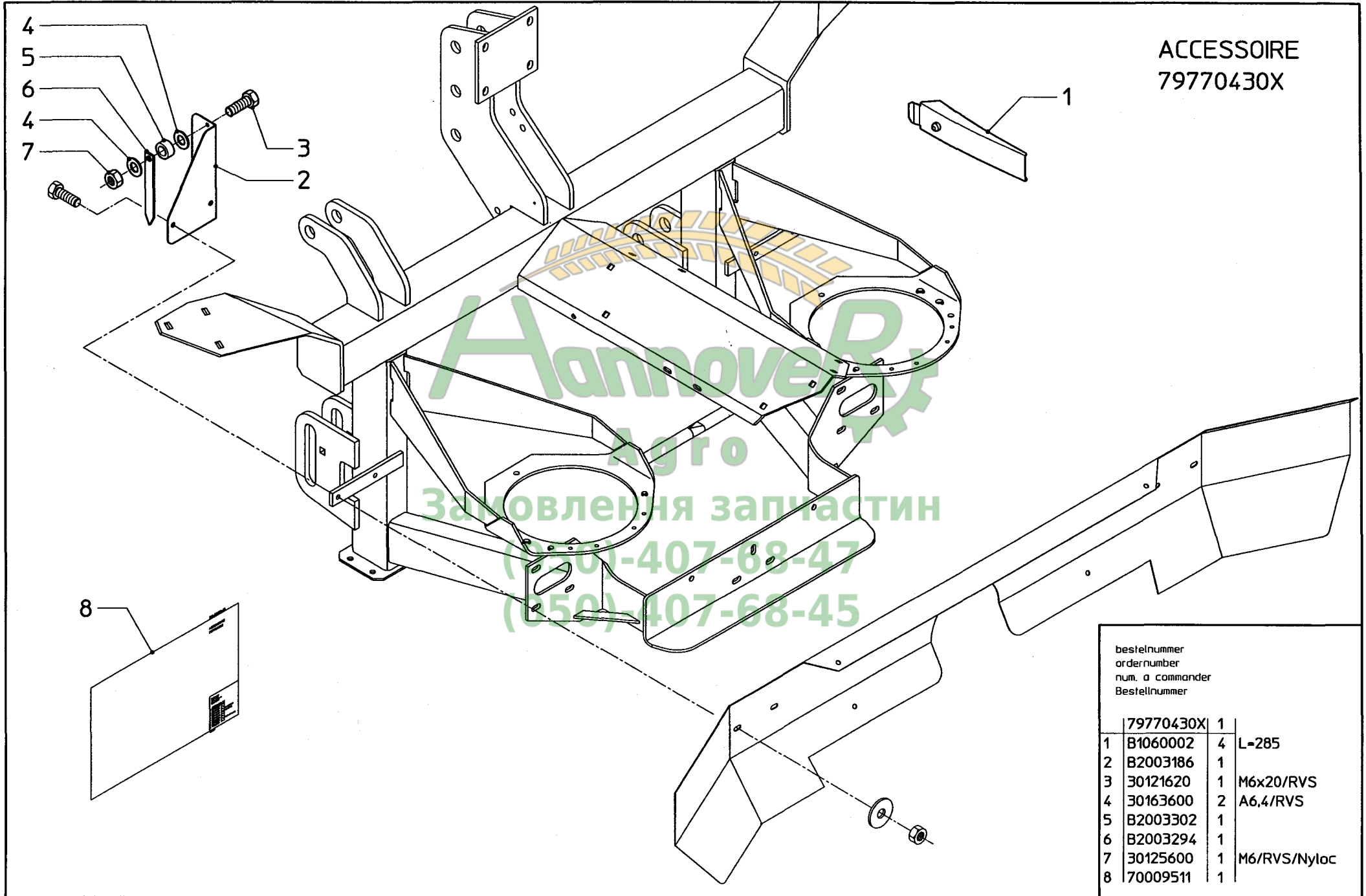


serial number 77151

E2

RS-M 1050/1700

ACCESSOIRE
79770430X



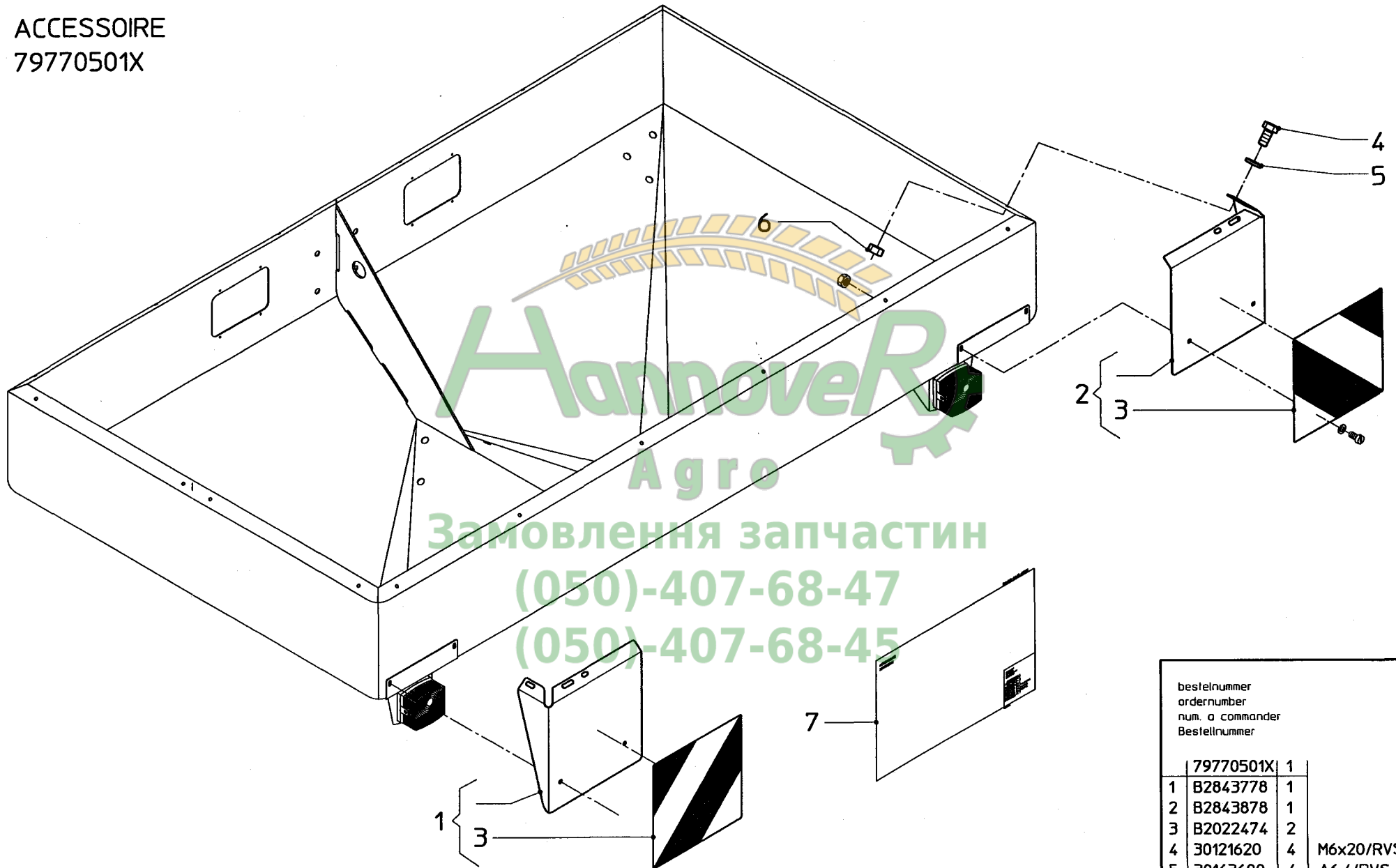
bestelnummer	ordernumber	num. a commander	Bestellnummer
79770430X	1		
1	B1060002	4	L-285
2	B2003186	1	
3	30121620	1	M6x20/RVS
4	30163600	2	A6,4/RVS
5	B2003302	1	
6	B2003294	1	
7	30125600	1	M6/RVS/Nyloc
8	70009511	1	

serial number 77151

E3

RS-M 1050/1700

ACCESSOIRE
79770501X



	bestelnummer	ordernumber	num. a commander	Bestellnummer
	79770501X	1		
1	B2843778	1		
2	B2843878	1		
3	B2022474	2		
4	30121620	4	M6x20/RVS	
5	30163600	4	A6,4/RVS	
6	30105600	4	M6/RVS	
7	70009554	1		

serial number 77151

C1

RS-M 1050/1700

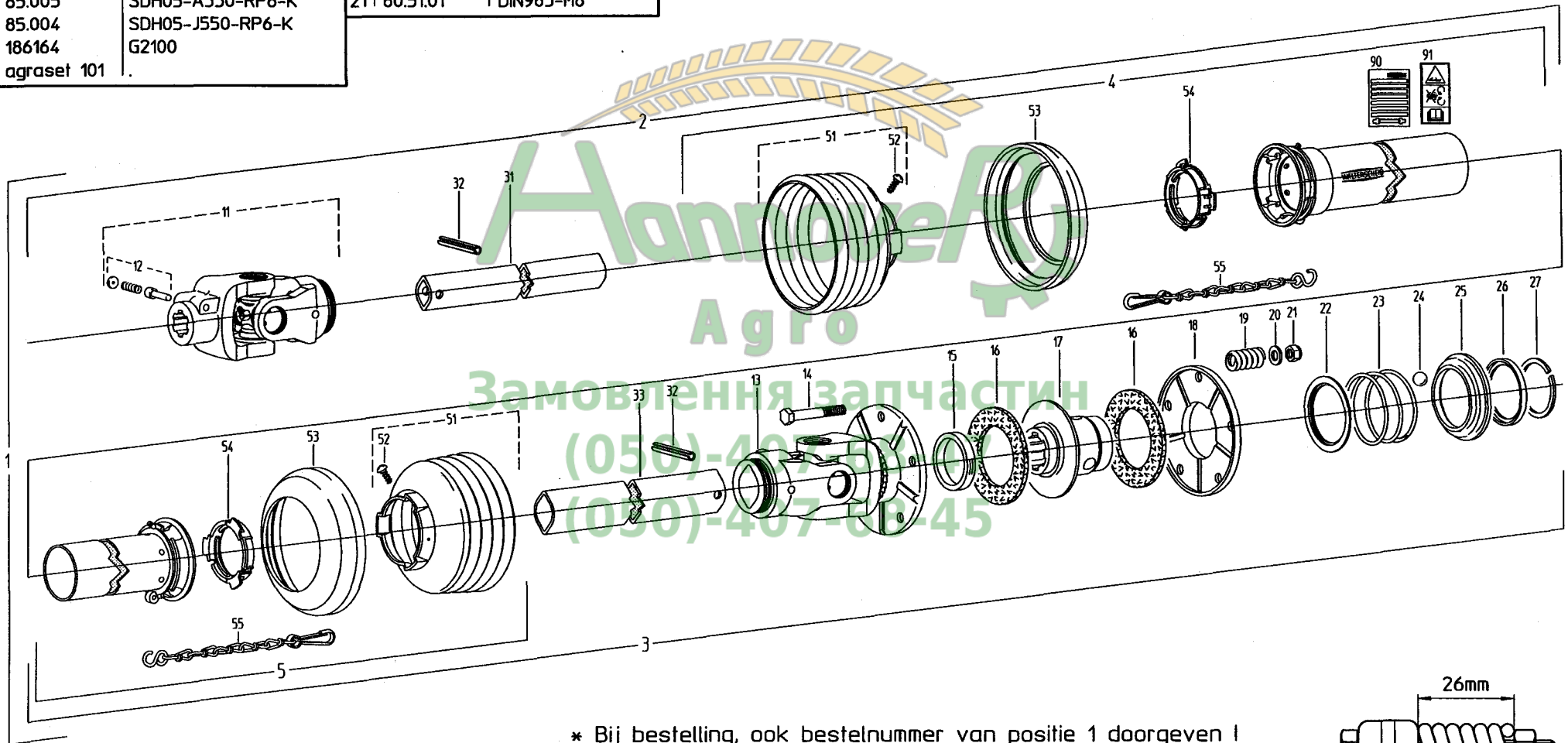
bestelnummer
ordernumber
num. a commander
Bestellnummer

	Walterscheid	
1	46120075	W100E-SD05-710-K94/1
2	104557	WH100E-SD05-656
3	120589	WH100E-SD05-641/K94/1
4	85.005	SDH05-A550-RP6-K
5	85.004	SDH05-J550-RP6-K
11	186164	G2100
12	agraset 101	

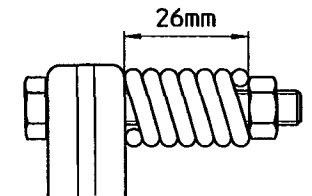
13	119152	G2100
14	60.04.12	DIN931-M8x60
15	16.52.05	43,3x53x9
16	56.73.13	56x90x4,5
17	16.50.555	1 3/8"(6)ZV
18	16.20.202	
19	66.01.47	
20	60.77.00	DIN125-B8,4
21	60.51.01	DIN985-M8

22	12.20.16	
23	66.01.46	
24	64.01.02	DIN5401-1/2-V
25	65.03.101	R-ø80
26	16.20.52	
27	62.10.02	DIN5417-SP 50
31	75.06.15	00a-620
32	61.04.01	DIN1481-8x50

33	75.12.15	0a-605
51	85.05.05	n-RP5
52	60.15.00	4x10
53	83.10.03	
54	83.09.01	
55	82.36.03	
90	705066	
91	16.61.175	



- * Bij bestelling, ook bestelnummer van positie 1 doorgeven !
- * bei Bestellung zusätzlich Bestell-Nr. der Position 1 angeben !
- * When ordering, part No. of item 1 must also be indicated !
- * En cas de commande, indiquer aussi la référence du repère 1 !



NUMERICAL INDEX / NUMMERN-VERZEICHNIS / INDEX NUMERIQUE / NUMERIEKE INDEX / INDICE DE NUMEROS

1 RS-M 1050/1700

Part no.	Page: 06	Part no.	Page: 07	Part no.	Page: 08	Part no.	Page: 09	Part no.	Page: 10
Teile-nr.	Selle	Teile-nr.	Selle	Teile-nr.	Selle	Teile-nr.	Selle	Teile-nr.	Selle
No. de ref.	Page	No. de ref.	Page	No. de ref.	Page	No. de ref.	Page	No. de ref.	Page
Onderd. nr.	Pagina	Onderd. nr.	Pagina	Onderd. nr.	Pagina	Onderd. nr.	Pagina	Onderd. nr.	Pagina
Nom. de pza	Pagina	Nom. de pza	Pagina	Nom. de pza	Pagina	Nom. de pza	Pagina	Nom. de pza	Pagina
79770259	D16	B0817978	D06	B1578602	D05	B1896878	D15	B2068778	D07
79770260	D16	B0817978	D14	B1578794	D05	B1907186	D13	B2071674	C16
79770261	D16	B0818078	D06	B1593594	D03	B1907486	D13	B2084694	D16
79770339	D08	B0818078	D14	B1599786	D01	B1907786	D13	B2092402	D03
79770361	D14	B0835278	D10	B1599886	D01	B1907802	D13	B2092578	D03
79770389	E01	B0854293	D11	B1599894	D10	B1907978	D13	B2092694	D03
79770392	D14	B0854293	D14	B1599894	D14	B1926394	D14	B2134778	D03
79770401	D10	B0854378	D11	B1599986	D01	B1926493	D14	B2236094	D06
79770430	E02	B0870178	D01	B1608494	D10	B1933894	D16	B2333794	D04
79770487	D10	B0897393	D01	B1616786	D05	B1933994	D16	B2333878	D05
79770488	D15	B0903374	C16	B1616886	D05	B1934094	D16	B2395394	D16
79770495	D09	B1060002	D04	B1617078	D05	B1934194	D16	B2442302	E01
79770501	E03	B1060002	E02	B1632694	D06	B1934294	D16	B2498994	D10
80504001	D06	B1060102	D04	B1632794	D06	B1934394	D16	B2530294	D03
80504001	D11	B1060202	D04	B1654494	D04	B1934494	D16	B2530494	D03
80504001	E01	B1077694	D04	B1654594	D04	B1934594	D16	B2530594	D03
80504003	D15	B1077702	D04	B1665294	D01	B1934694	D16	B2544002	D05
80504003	D16	B1082102	D04	B1709302	D04	B1934794	D16	B2544102	D05
82.36.03	C01	B1082102	D13	B1727574	D11	B1934894	D16	B2544278	D05
83.09.01	C01	B1181374	C16	B1750294	D07	B1935578	D16	B2544378	D05
83.10.03	C01	B1181374	D04	B1754278	D04	B1936602	D16	B2544402	D05
85.004	C01	B1194874	C16	B1761578	D06	B1937378	D16	B2544502	D05
85.005	C01	B1194874	D04	B1773794	D06	B1937478	D16	B2617294	E01
85.05.05	C01	B1226902	D06	B1774002	D05	B1953394	D03	B2705594	D10
90090191	C16	B1306893	D14	B1774102	D05	B1998902	D04	B2712786	D01
90090191	D06	B1307394	D01	B1779586	D07	B1999002	D04	B2722194	D15
99440851	D14	B1308693	D11	B1779686	D07	B1999102	D04	B2722494	D02
AGRASET 101	C01	B1310474	C16	B1783094	D03	B2003186	E02	B2723594	D07
B0341273	D15	B1394678	D13	B1797478	D11	B2003294	E02	B2760978	D07
B0682993	D03	B1504578	D06	B1825674	C16	B2003302	E02	B2776778	D07
B0723378	D07	B1504578	D11	B1838978	D06	B2022474	E03	B2776802	D07
B0736102	D06	B1504578	E01	B1839078	D06	B2024094	D06	B2778974	C16
B0738978	D06	B1504678	D06	B1840194	D11	B2024194	D06	B2801194	D07
B0738978	D14	B1504678	D10	B1870694	D09	B2024694	D06	B2801294	D07
B0739093	D06	B1504678	D11	B1871194	D09	B2030678	D06	B2815094	D03
B0765193	D01	B1504678	D14	B1871994	D08	B2057986	D01	B2820794	D09
B0765193	D10	B1504678	E01	B1872394	D08	B2068578	D05	B2831494	D15
B0765193	D14	B1578502	D05	B1885578	D12	B2068678	D05	B2831594	D15

NUMERICAL INDEX / NUMMERN-VERZEICHNIS / INDEX NUMERIQUE / NUMERIEKE INDEX / INDICE DE NUMEROS

1 RS-M 1050/1700
Part no. Page: 11
Teile-nr. Selle
No. de ref. Page
Onderd. nr. Pagina
Nom. de pza Pagina

B2834474	C16
B2836494	D10
B2836894	D10
B2836994	D10
B2839394	D09
B2843778	E03
B2843878	E03
B3083893	D14
B3084193	D14
TR1010	C16
TR2005	C16
TR2011	C16
TR2015	C16
TR2023	C16
TR2023	D12
TR2039	C16
TR2059	C16
TR2059	D10



Замовлення запчастин

(050)-407-68-47

(050)-407-68-45



Spare parts list
Ersatzteilliste
Onderdelenlijst
Liste de pieces de rechange
Lista de piezas de recambio
Reservdels lista

KVERNELAND NIEUW-VENNEP B.V.
Hoofdweg 1278
NL-2153 LR Nieuw-Vennep
The Netherlands



(050)-407-68-47
(050)-407-68-45

Prod. series nr 77151

Vanaf produkt identiteitnr (PIN)

Effective from ident.nr (PIN)

Gültig ab Prod. nr (PIN)

A partir du no d'ident. du produit (PIN)

A partir del num. Ident. del producto (PIN)

Gällande fr.o.m. ident.nr (PIN)

01001

70.009.503/1