

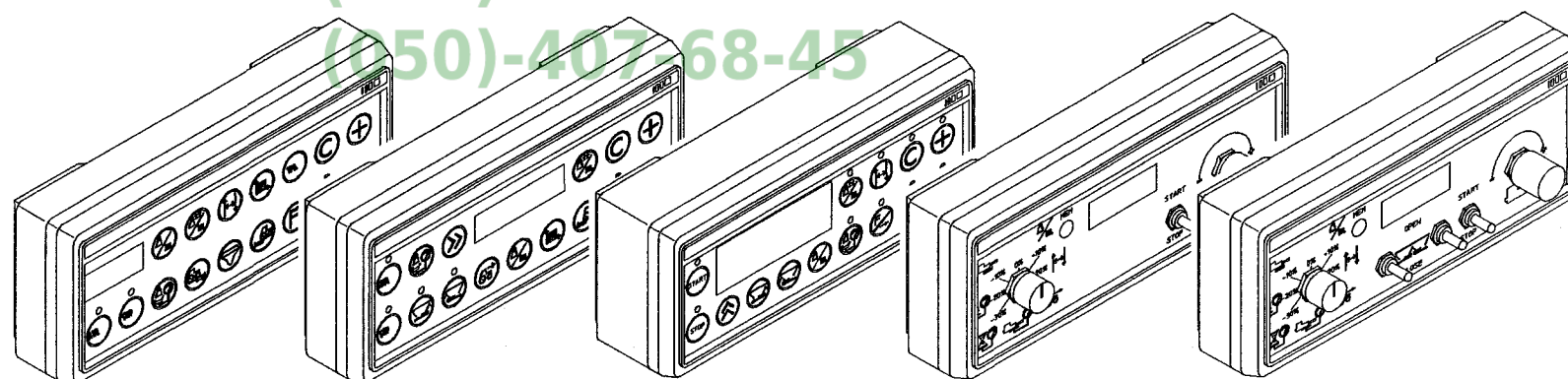


Spare parts list
Ersatzteilliste
Onderdelenlijst
Liste de pieces de rechange
Lista de piezas de recambio
Reservdels lista

PS-ED821 / RS-ED825 / RS-EDW PS-E 980 / RS-E 985

Агро
Запчасти и комплектующие
(050)-407-68-47
(050)-407-68-45

Prod. series nr 73051



70.009.200/6

© Kverneland

NL:

Niets uit dit boek mag worden verveelvoudigd, opgeslagen in een, al dan niet, geautomatiseerd gegevensbestand of openbaar gemaakt; in enige vorm of op enige wijze hetzij elektronisch, mechanisch, optisch, door fotokopieën, microverfilming (inclusief micro- en macrofiche), opnamen, of enig andere manier, inclusief alle video en Cd-systemen, zonder voorafgaande schriftelijke toestemming van de uitgever.

GB:

All rights reserved. No part of this book may be reproduced, stored in a data base or retrieval system, or published, in any form or in any way, electronically, mechanically, optically, by print, photo print, microfilm (including micro and macro fiche), or any other means, including all video and CD systems, without prior written permission from the publisher.

D:

Dieses Buch und alle darin enthaltenen einzelnen Angaben und Abbildungen sind Urheberrechtlich geschützt. Jede Verwertung ausserhalb der Grenzen des Urheberrechts ist ohne ausdrückliche, schriftliche Zustimmung des Herausgebers unzulässig. Das gilt insbesondere für Vervielfältigungen aller Art, Übersetzungen, Mikroverfilmungen, einschliesslich Mikro- und Makrofiche, und die Einspeicherung und/oder Verarbeitung in elektronischen und optischen Systemen, einschliesslich aller Video und CD-Systeme.

F:

La propriété littéraire de ce manuel est protégée et les droits en découlant sont réservés. L'utilisation, même partielle, du texte et des illustrations n'est admissible qu'avec la permission écrite de l'auteur, en particulier la reproduction, la traduction, la restitution par des systèmes photomécaniques ou tous autres, y compris les microfilms, les micro- et macro fiches ainsi que la mise en mémoire et le traitement dans des installations électroniques et optiques, y compris les systèmes vidéo et CD.

ES:

Este manual se acoge al amparo del Derecho de la Propiedad Intelectual. Salvo permisión escrita quedan reservados todos los derechos inherentes en especial los de reimpresión, de traducción, de reproducción en forma fotomecánica ó en cualquier otra forma, incluidos microfilmes, micro- y macrofichas así como el almacenamiento y procesamiento en sistemas electrónicos y ópticos, incluidos todos sistemas de video y CD, aún cuando no se utilice más que parcialmente texto o figura.

I:

Tutti i diritti di autore riservati. L'utilizzazione, anche parziale, del presente manuale, in particolare la ristampa, la traduzione, la riproduzione mediante microfilm, micro- e macroschede, come pure la memorizzazione e/o elaborazione tramite impianti elettronici, videosistemi e sistemi CD compresi, è ammessa solo se autorizzata preventivamente dall'autore per iscritto.

S:

Mångfaldigande eller lagring i databas av denna bok, eller delar av densamma, är förbjudet utan föregående skriftligt medgivande av utgivaren. Förbudet gäller varje form av mångfaldigande genom elektroniskt, mekaniskt, eller optiskt förfarande, genom tryckning, fotokopiering, microfilm (inkl. micro och macro fiche) eller på något annat sätt inklusive alla video- och CD-system.

DK:

Alle rettigheder reserveret. Ingen dele af denne bog må genoptrykkes, lagres i en database eller andet system, eller udgives i nogen form, elektronisk, mekanisk, optisk, ved tryk, fotokopiering, microfilm (inkl. mikro- og makrofiche), eller anden måde, inkl. video- og CD-systemer, uden forudgående skriftlig tilladelse fra udgiveren.

AANHAALMOMENTEN/TORQUES/ANZUGSMOMENTE/COUPLES DE SERRAGE/PARES DE APRIÈTE/ I MOMENTI TORCENTI/ÅTRAGNINGSMOMENT/MOMENTER

- NL Richtlijnen voor aanhaalmomenten (in Nm) voor zelfborgende moeren, zeskantbouten en moeren.
 D Richtlinien für Anzugsmomente (in Nm) für selbstsichernde Muttern, Sechskantschrauben und muttern.
 ES Directrices para los pares de apriete (en Nm) para tuercas autoblocantes, tornillos hexagonales y tuercas.
 S Riktlinjer för åtdragningsmoment (i Nm) för självlåsand bultar, sexkantsbultar och muttrar.

- GB Directives for torques (in Nm) for self-locking nuts, hexagonal bolts and nuts.
 F Directives relatives aux couples de serrage (en Nm) pour les écrous à auto-blocage, les boulons à six et les écrous.
 I Linee guida riguardanti i momenti torcenti (espressi in Nm) per dadi autobloccanti, bulloni esagonali e dadi.
 DK Retningslinier for momenter (i Nm) for selvåsende møtrikker, hexagon bolte og møtrikker.

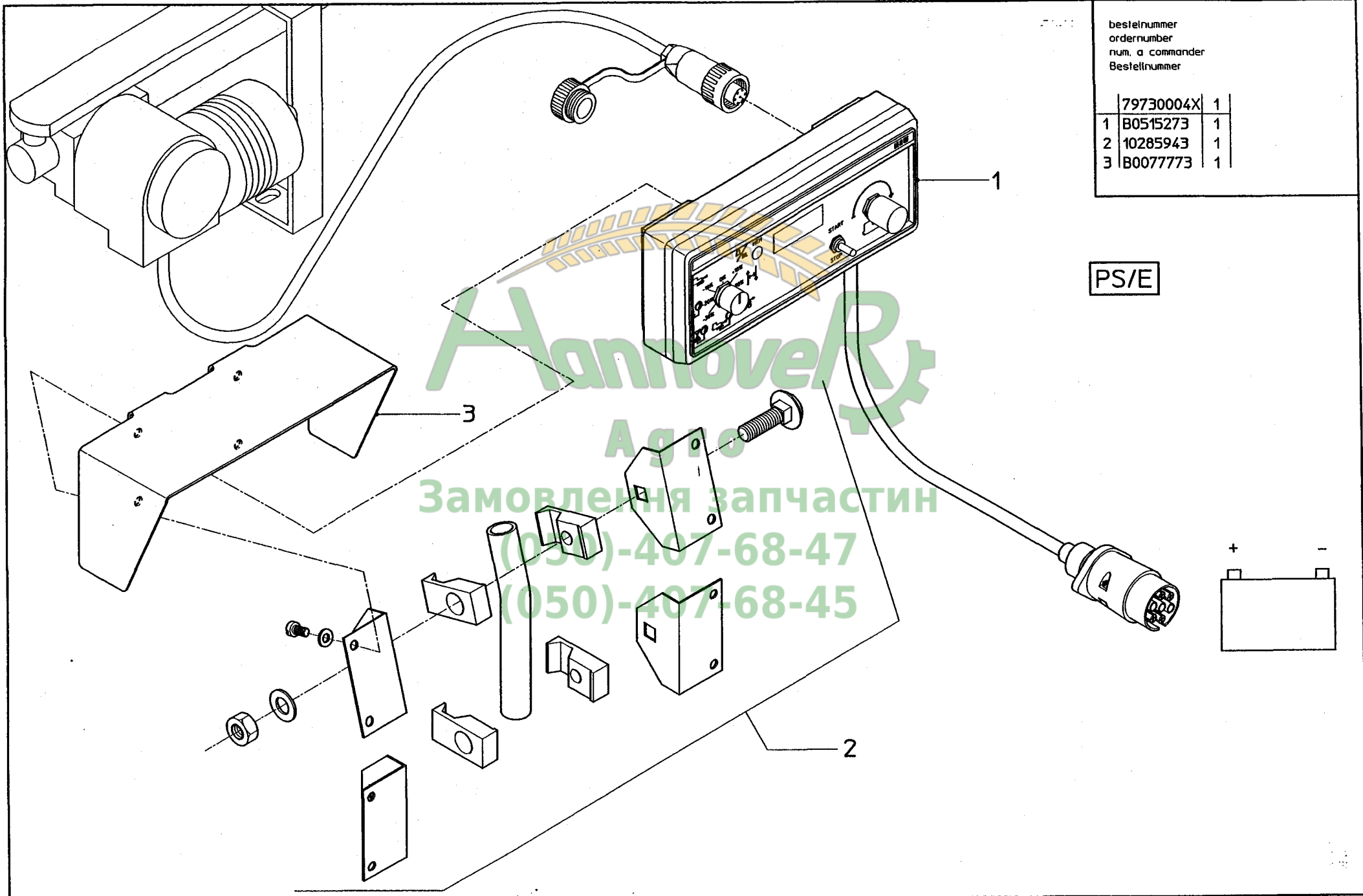
| KWALITEIT/QUALITY/QUALITÄT QUALITE/CALIDAD/QUALITÀ/KVALITÄT | 4.6 | | 8.8 | | 10.9 | | 12.9 | |
|---|------|------|------|------|------|------|------|------|
| | 0,10 | 0,13 | 0,10 | 0,13 | 0,10 | 0,13 | 0,10 | 0,13 |
| Wrijving/Friction/Reibung/Frottement/ Fricción/Frizione/Friktion* | | | | | | | | |
| Schroefdraad/Thread/Gewinde/Filetage Rosca/Filettatura/Gänga/Størrelse | | | | | | | | |
| M5 | 1,7 | 2 | 5 | 6 | 7 | 9 | 8 | 10 |
| M6 | 3 | 4 | 9 | 10 | 13 | 15 | 15 | 18 |
| M8 | 8 | 9 | 21 | 25 | 31 | 36 | 36 | 42 |
| M10 | 16 | 19 | 40 | 50 | 60 | 70 | 70 | 85 |
| M12 | 27 | 32 | 70 | 85 | 105 | 120 | 120 | 145 |
| M14 | 42 | 50 | 115 | 135 | 165 | 195 | 195 | 230 |
| M16 | 65 | 76 | 175 | 210 | 260 | 300 | 300 | 350 |
| M18 | 90 | 110 | 250 | 290 | 350 | 420 | 410 | 490 |
| M20 | 125 | 150 | 350 | 420 | 500 | 600 | 580 | 700 |
| M22 | 170 | 200 | 470 | 560 | 670 | 800 | 780 | 930 |
| M24 | 210 | 250 | 600 | 710 | 860 | 1020 | 1000 | 1180 |

- * NL De wrijvingscoëfficiënt van 0,10 geldt voor geoliede plaat, gletlizer, geharde vlakken, vette schroefdraad, etc. De hogere waarde van 0,13 geldt voor een droge plaat. Uitzonderingen op deze tabel zijn vermeld in het onderdelen- en/of instructieboek. Aanhaalmomenten voor bouten en moeren met gekartelde onderkant, zoals Tensilock en Whizlock, 10% extra.
- * GB The friction coefficient of 0,10 applies to oiled sheet, cast iron, hardened surfaces, greasy thread, etc. The higher value of 0,13 applies to dry sheet. Exceptions to this table are stated in the parts- and /or instruction manual. Torques for bolts and nuts with a knurled underside, like Tensilock and Whizlock, 10% extra.
- * D Der Reibungskoeffizient von 0,10 gilt für geölte Flächen, Gußeisen, gehärtete Flächen, gefettetes Gewinde usw. Der höhere Wert von 0,13 gilt für trockene Flächen. Ausnahmen zu dieser Tabelle sind im Ersatzteilheft und/oder in der Betriebsanleitung. Anzugsmomente für Schrauben und Muttern mit gerändelter Unterseite, wie Tensilock und Whizlock, zuzüglich 10% extra.
- * F Le coefficient de frottement de 0,10 s'applique aux surfaces huilées, à la fonte, aux surfaces trempées, aux filetages graissés etc. Le coefficient de 0,13 aux surfaces sèches. Les exceptions à ce tableau sont mentionnées dans la nomenclature des pièces et/ou dans le manuel d'emploi. Ajoutez 10% pour les boulons et écrous à partie inférieure crénelée, comme les Tensilock et les Whizlock.
- * ES El coeficiente de fricción de 0,10 es indicado para planchas lubricadas, hierro fundido, superficies endurecidas, rosca grasienta, etc. El valor más alto de 0,13 es para planchas secas. Las excepciones a este cuadro se mencionan en el libro de repuestos y/o manual de instrucciones. Los pares de apriete para tornillos y tuercas con cara inferior dentada, como los Tensilock y Whizlock, 10% extra.
- * I Il coefficiente di frizione pari a 0,10 si riferisce a superfici oliate, alla ghisa, a superfici temprate, a filettature spesse ecc. Il valore più alto, pari a 0,13, si riferisce a superfici asciutte. Tutte le eccezioni a quanto riportato in questa tabella, si trovano nel libretto dei pezzi o nel libretto delle Istruzioni. I momenti torcenti per bulloni e dadi la cui parte inferiore è zigrinata, come i Tensilock (K 100) e Whizlock, sono superiori del 10%.
- * S Friktionskoefficienten 0,10 gäller oljad plåt, gjutjärn, härdade ytor, smorda gängor etc. Det högre värdet 0,13 gäller torr plåt. Undantag från denna tabell anges i reservdels- och/eller Instruktionsboken. Åtdragningsmoment för räfflade bultar och muttrar, som Tensilock och Whizlock 10% extra.
- * DK Friktionskoefficienten på 0,10 gælder for smurte flader, støbejern, hærkede overflader, fedtholdige gevind etc. Den højere værdi på 0,13 gælder for tørre flader. Undtagelser til tabellen er angivet i reservdels- og/eller Instruktionsbog. Når det drejer sig om momenter for bolte og møtrikkers med en riflet underside, som Tensilock (K100) og Whizlock, skal der tilføjes 10% ekstra.

serial number 73051

I.1

PS-E 980



bestelnummer
ordernumber
num. a commander
Bestellnummer

| | | |
|---|-----------|---|
| | 79730004X | 1 |
| 1 | B0515273 | 1 |
| 2 | 10285943 | 1 |
| 3 | B0077773 | 1 |

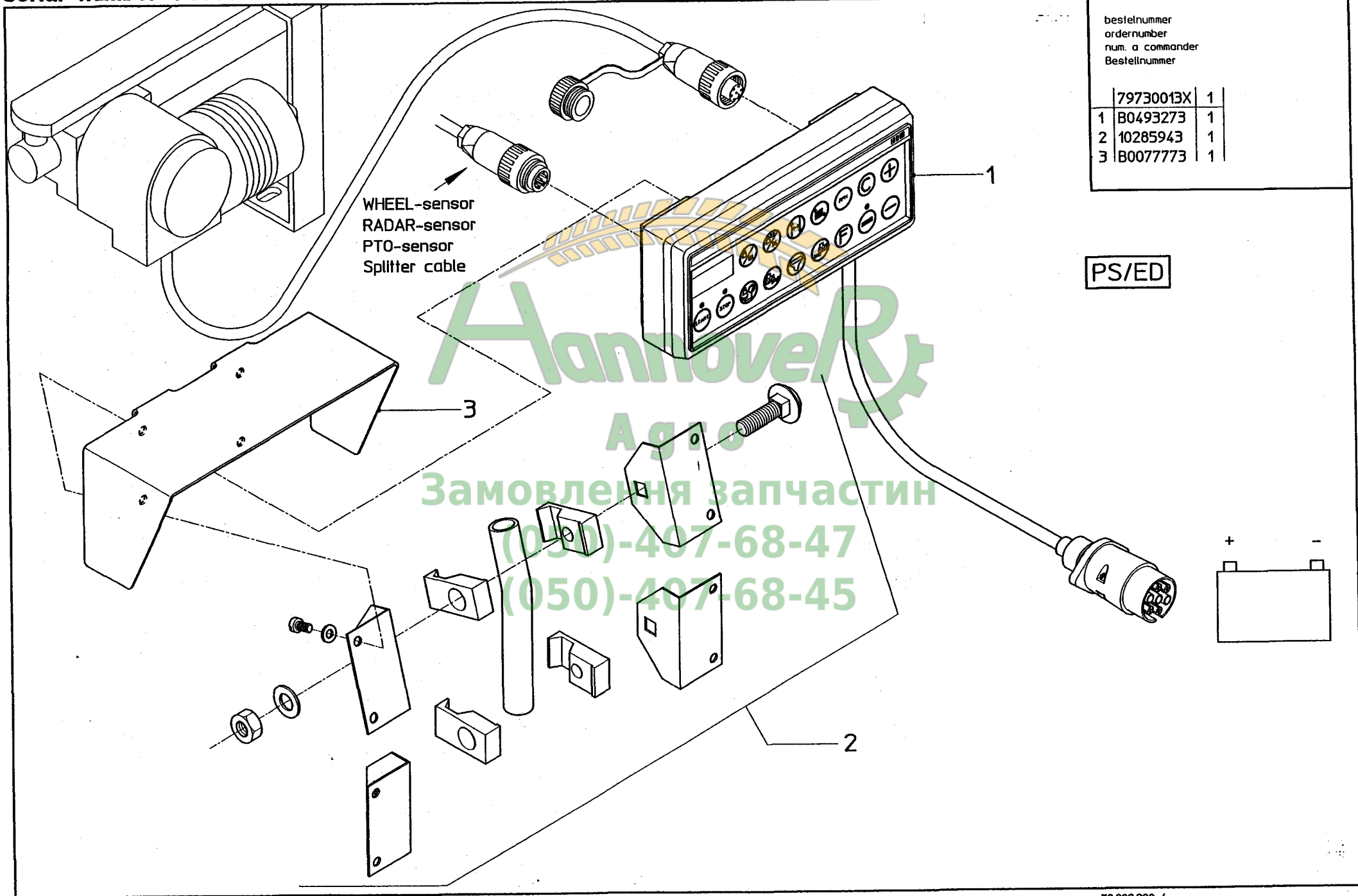
PS/E

Замовлення запчастин
(050)-407-68-47
(050)-407-68-45

serial number 73051

I.2

PS-ED 821



bestelnummer
ordernumber
num. a commander
Bestellnummer

| | |
|------------|---|
| 79730013X | 1 |
| 1 B0493273 | 1 |
| 2 10285943 | 1 |
| 3 B0077773 | 1 |

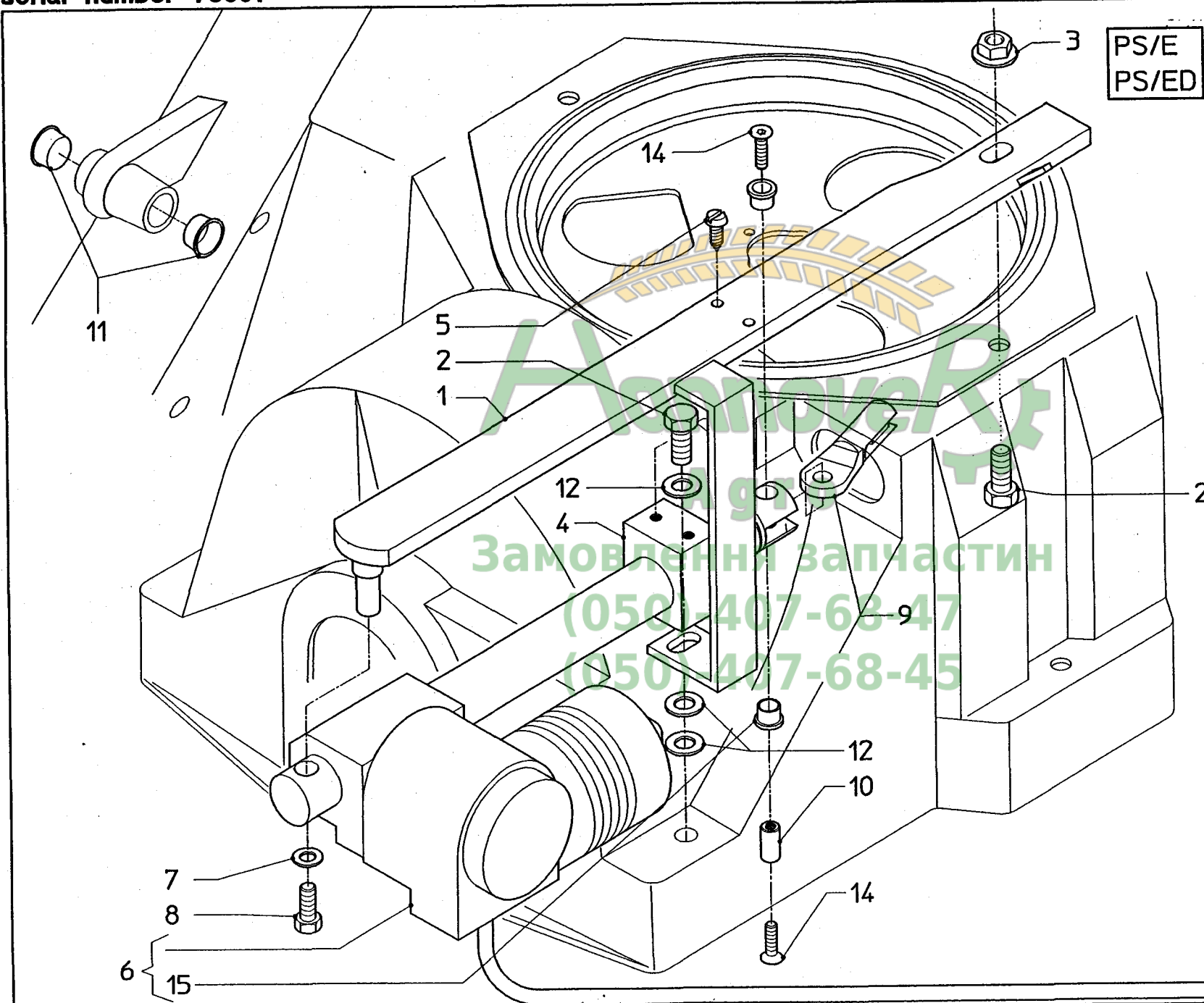
PS/ED

Агросервіс
Замовлення запчастин
(050)-497-68-47
(050)-497-68-45

serial number 73051

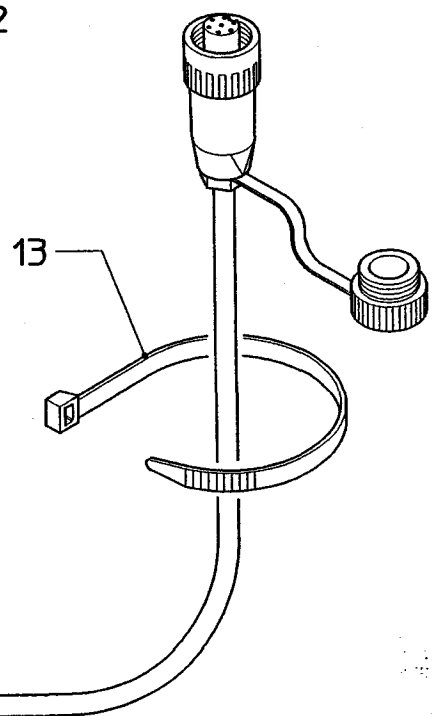
1.3

PS-ED 821/PS-E 980



| bestelnummer | | ordernumber | | num. a commander | | Bestelnummer | |
|--------------|----------|-------------|-------------|------------------|--|--------------|--|
| 79730045X | 1 | | | | | | |
| 1 | B1467586 | 1 | | | | | |
| 2 | 30121125 | 2 | M10x25/RVS | | | | |
| 3 | 30598010 | 1 | K10/M10/DM | | | | |
| 4 | B0980578 | 1 | | | | | |
| 5 | 30122225 | 2 | B5.5x25/RVS | | | | |
| 6 | B0515773 | 1 | | | | | |
| 7 | 30111800 | 1 | 8,4/RVS | | | | |
| 8 | 30121820 | 1 | M8x20/RVS | | | | |
| 9 | B1843178 | 1 | | | | | |
| 10 | B2251102 | 1 | 10x28/RVS | | | | |
| 11 | 38233182 | 2 | | | | | |
| 12 | 30111100 | 3 | 10,5/RVS | | | | |
| 13 | 80504001 | 3 | 365x7,8 | | | | |
| 14 | 30126612 | 2 | M6x12/RVS | | | | |
| 15 | B2235978 | 2 | | | | | |

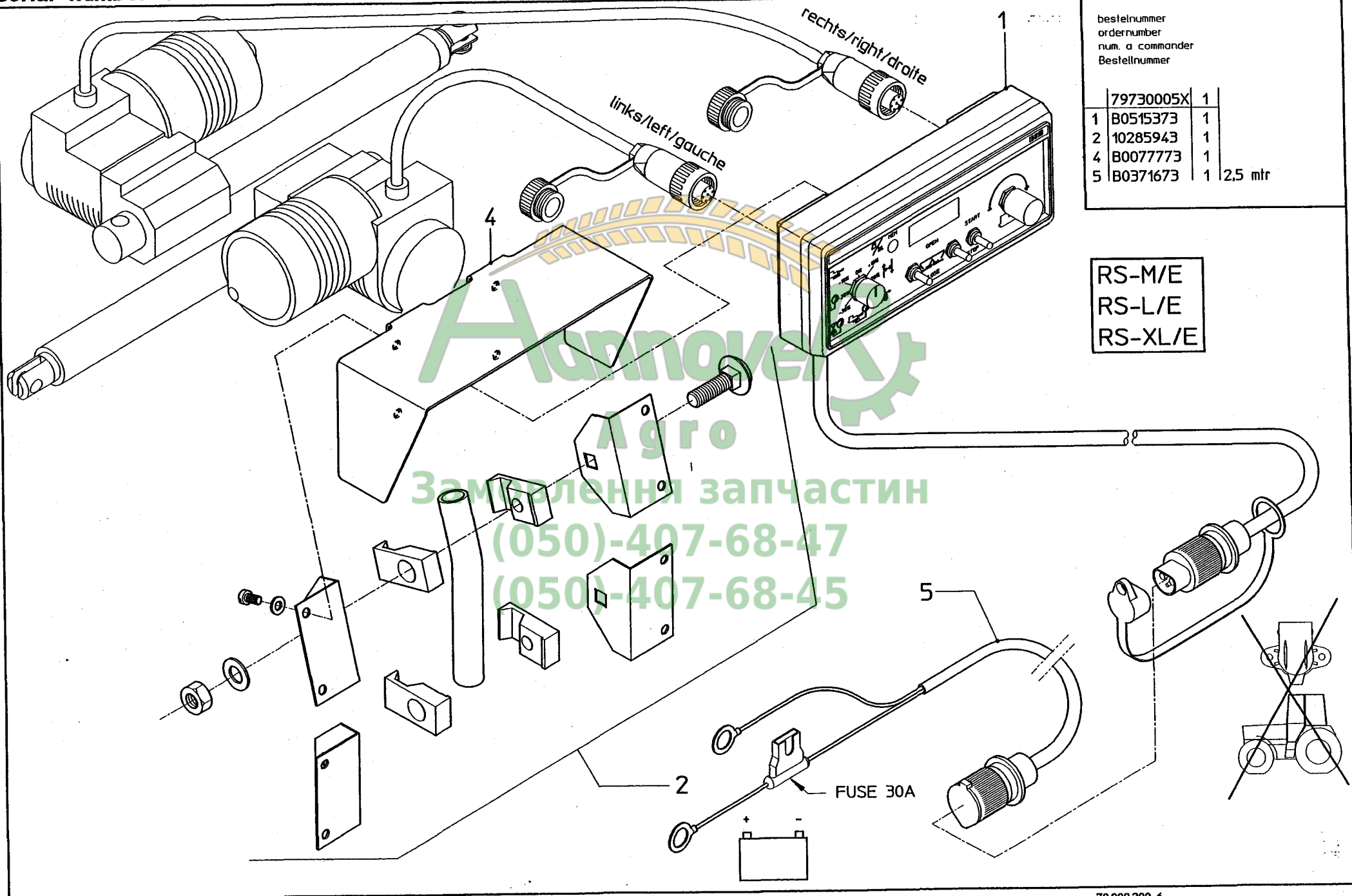
Замовлення запчастин
(050) 407-68-47
(050) 407-68-45



serial number 73051

I.4

RS-E 985



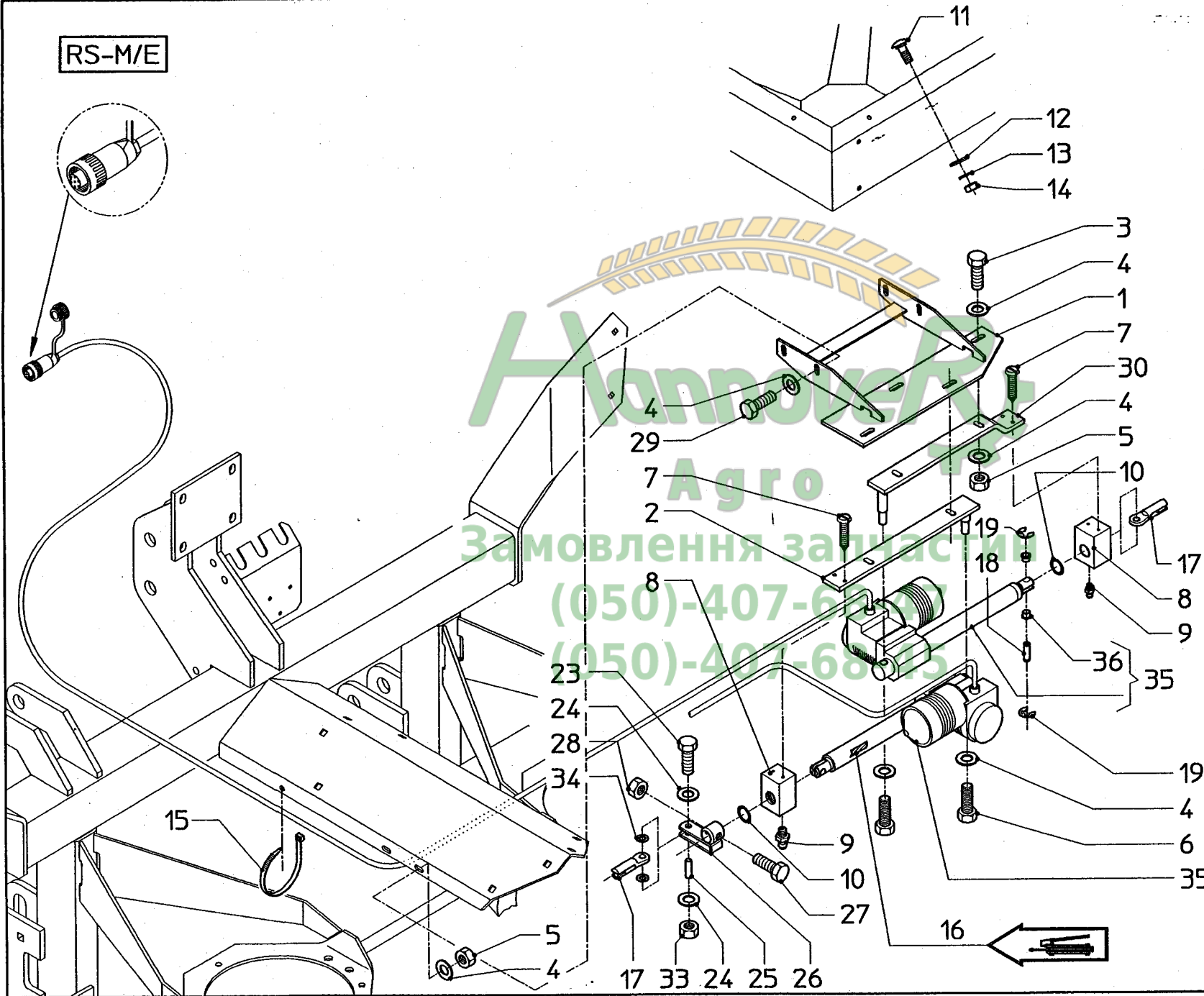
bestelnummer
ordernumber
num. a commander
Bestellnummer

| | |
|------------|-----------|
| 79730005X | 1 |
| 1 B0515373 | 1 |
| 2 10285943 | 1 |
| 4 B0077773 | 1 |
| 5 B0371673 | 1 2,5 mtr |

RS-M/E
RS-L/E
RS-XL/E

Агротех
Замовлення запчастин
(050)-407-68-47
(050)-407-68-45

RS-M/E



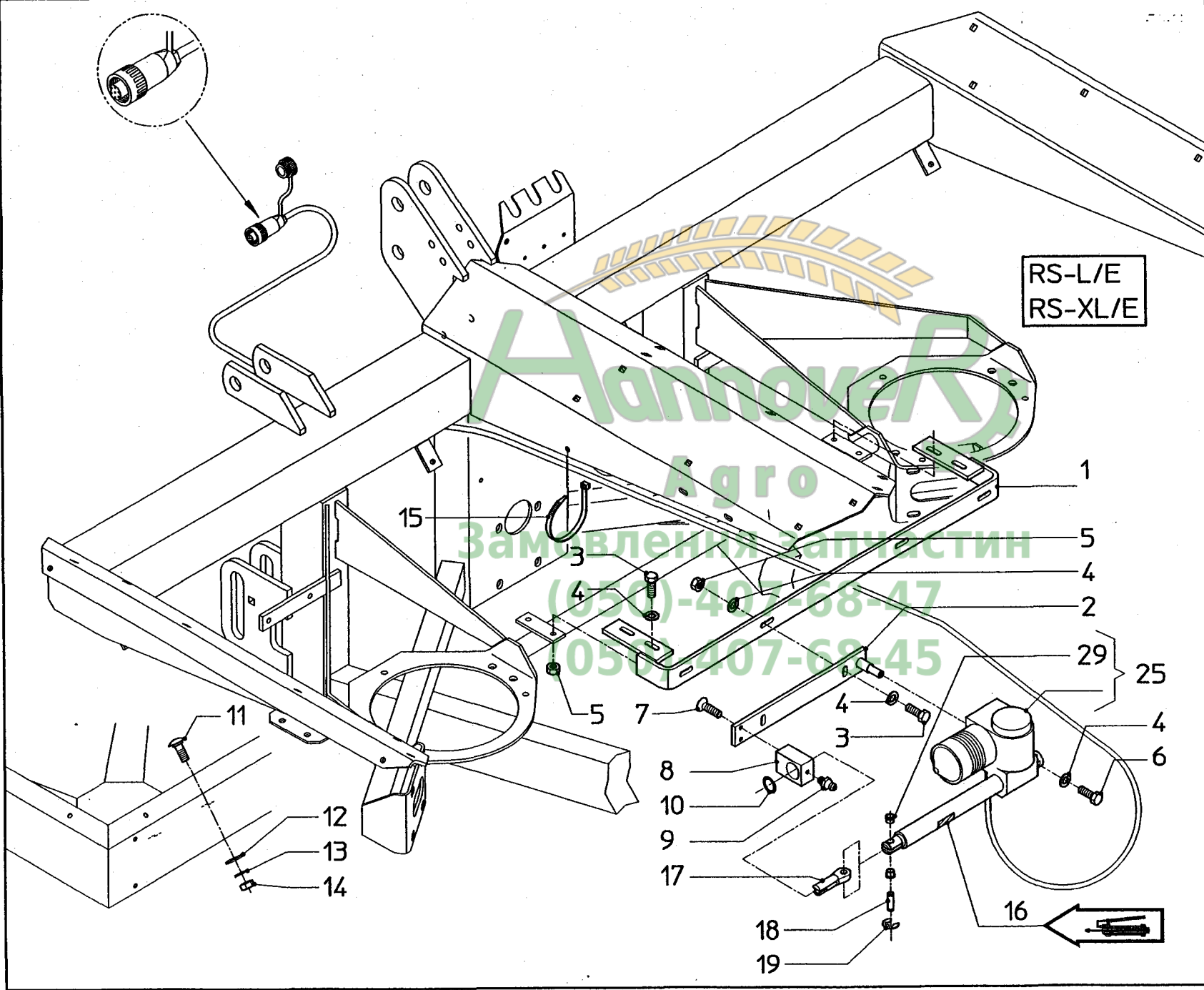
| bestelnummer | | ordernumber | | num. a commander | | Bestellnummer | |
|--------------|-----------|-------------|---------------|------------------|--|---------------|--|
| | 79770281X | 1 | | | | | |
| 1 | B1988886 | 1 | | | | | |
| 2 | B1843386 | 1 | | | | | |
| 3 | 30121830 | 4 | M8x30/RVS | | | | |
| 4 | 30111800 | 18 | 8,4/RVS | | | | |
| 5 | 30125800 | 8 | M8/RVS/Nyloc | | | | |
| 6 | 30121820 | 2 | M8x20/RVS | | | | |
| 7 | 30122225 | 4 | B5,5x25/RVS | | | | |
| 8 | B1843478 | 2 | | | | | |
| 9 | 41702899 | 2 | M8x1,25 | | | | |
| 10 | 36107317 | 2 | 29,74x3,53 | | | | |
| 11 | 30119120 | 4 | M10x20/RVS | | | | |
| 12 | 30163250 | 4 | 13/RVS | | | | |
| 13 | 30117100 | 4 | A10/RVS | | | | |
| 14 | 30161100 | 4 | M10/RVS | | | | |
| 15 | 80504001 | 8 | 365x7,8 | | | | |
| 16 | 90090190 | 2 | | | | | |
| 17 | B1843178 | 2 | | | | | |
| 18 | B1843002 | 1 | L=35 | | | | |
| 19 | 30116090 | 2 | 9/RVS | | | | |
| 23 | 30121630 | 1 | M6x30/RVS | | | | |
| 24 | 30163600 | 2 | A6,4/RVS | | | | |
| 25 | B2007302 | 1 | | | | | |
| 26 | B2007286 | 1 | | | | | |
| 27 | 30121245 | 1 | M12x45/RVS | | | | |
| 28 | 30125120 | 1 | M12/RVS/Nyloc | | | | |
| 29 | 30121825 | 4 | M8x25/RVS | | | | |
| 30 | B1988486 | 1 | | | | | |
| 33 | 30125600 | 1 | M6/RVS/Nyloc | | | | |
| 34 | 30111100 | 2 | 10,5/RVS | | | | |

| 79730053X | | 1 | |
|-----------|----------|---|--|
| 35 | B0515773 | 2 | |
| 36 | B2235978 | 2 | |

serial number 73051

I.6

RS-E 985



RS-L/E
RS-XL/E

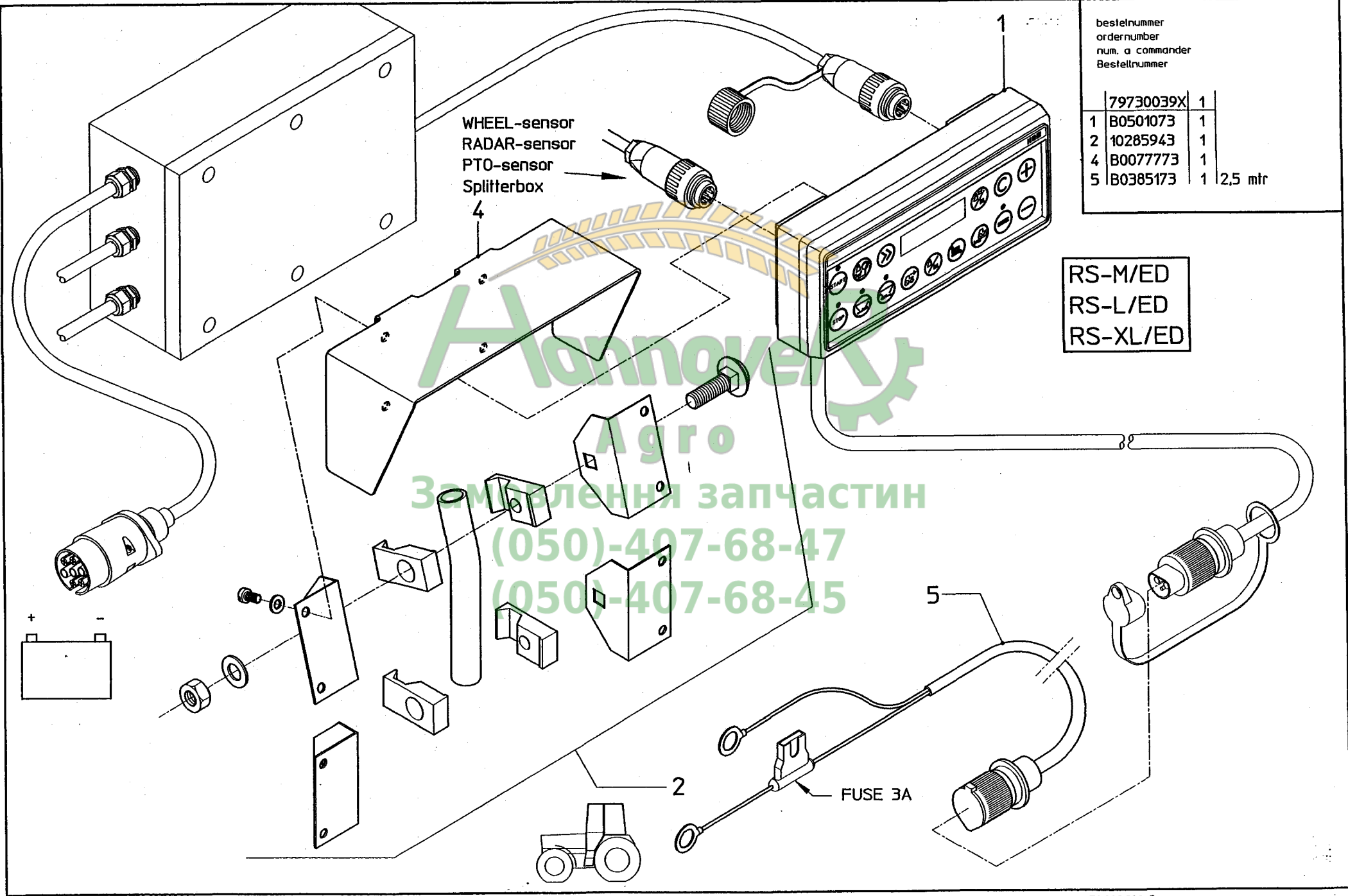
| | | |
|------------------|-----------|----------------|
| bestelnummer | 79770297X | 1 |
| ordernumber | | |
| num. a commander | | |
| Bestellnummer | | |
| 1 | B1747686 | 1 |
| 2 | B1843386 | 2 |
| 3 | 30121830 | 8 M8x30/RVS |
| 4 | 30111800 | 14 8,4/RVS |
| 5 | 30125800 | 8 M8/RVS/Nyloc |
| 6 | 30121820 | 2 M8x20/RVS |
| 7 | 30122225 | 4 B5,5x25/RVS |
| 8 | B1843478 | 2 |
| 9 | 41702899 | 2 M8x1,25 |
| 10 | 36107317 | 2 29,74x3,53 |
| 11 | 30119120 | 4 M10x20/RVS |
| 12 | 30163250 | 4 13/RVS |
| 13 | 30117100 | 4 A10/RVS |
| 14 | 30161100 | 4 M10/RVS |
| 15 | 80504001 | 8 365x7,8 |
| 16 | 90090190 | 2 |
| 17 | B1843178 | 2 |
| 18 | B1843002 | 2 L=35 |
| 19 | 30116090 | 4 9/RVS |

| | |
|-------------|---|
| 79730053X | 1 |
| 25 B0515773 | 2 |
| 26 B2235978 | 2 |

serial number 73051

I.7

RS-ED 825

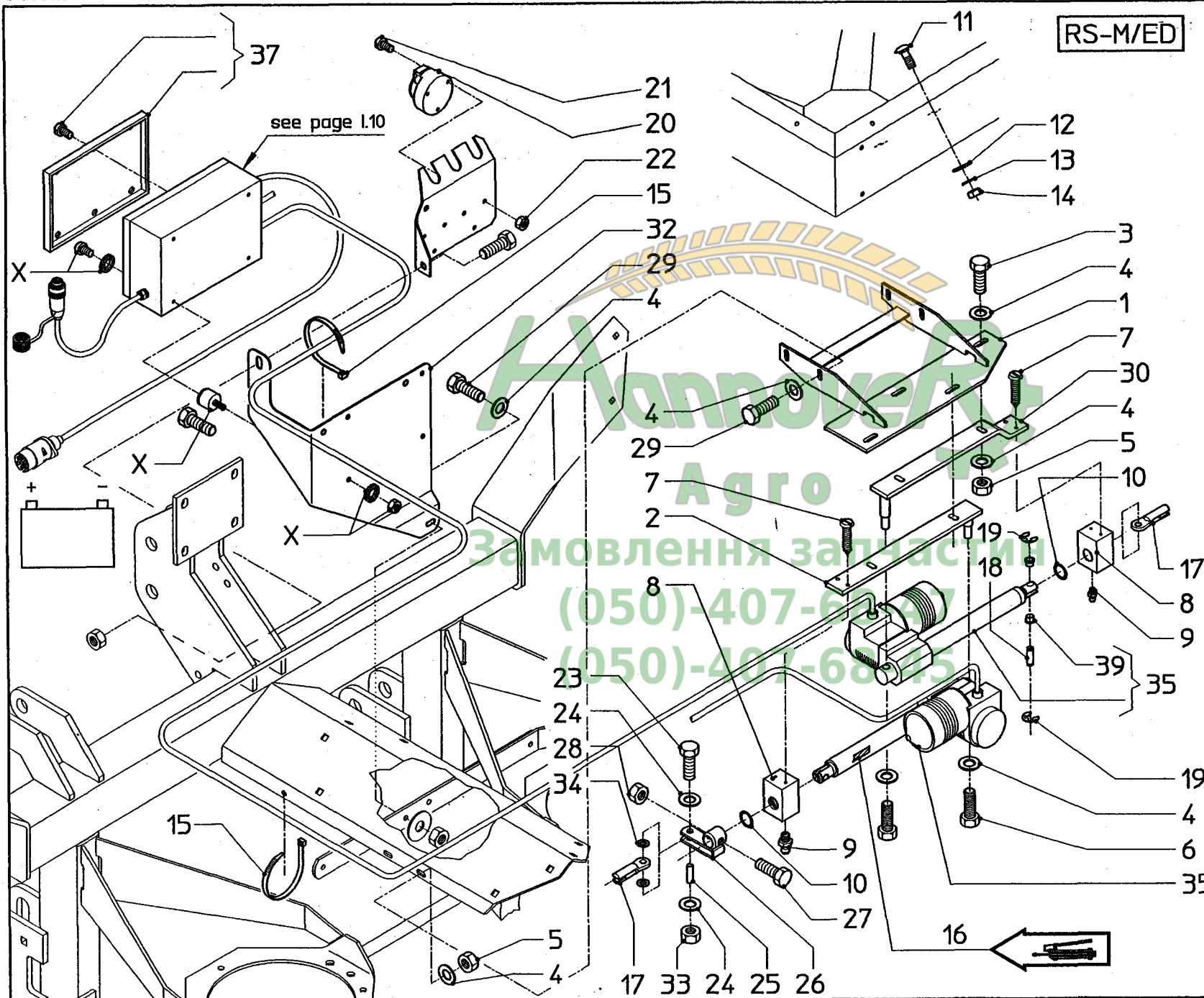


bestelnummer
ordernumber
num. a commander
Bestellnummer

| | |
|------------|-----------|
| 79730039X | 1 |
| 1 B0501073 | 1 |
| 2 10285943 | 1 |
| 4 B0077773 | 1 |
| 5 B0385173 | 1 2,5 mtr |

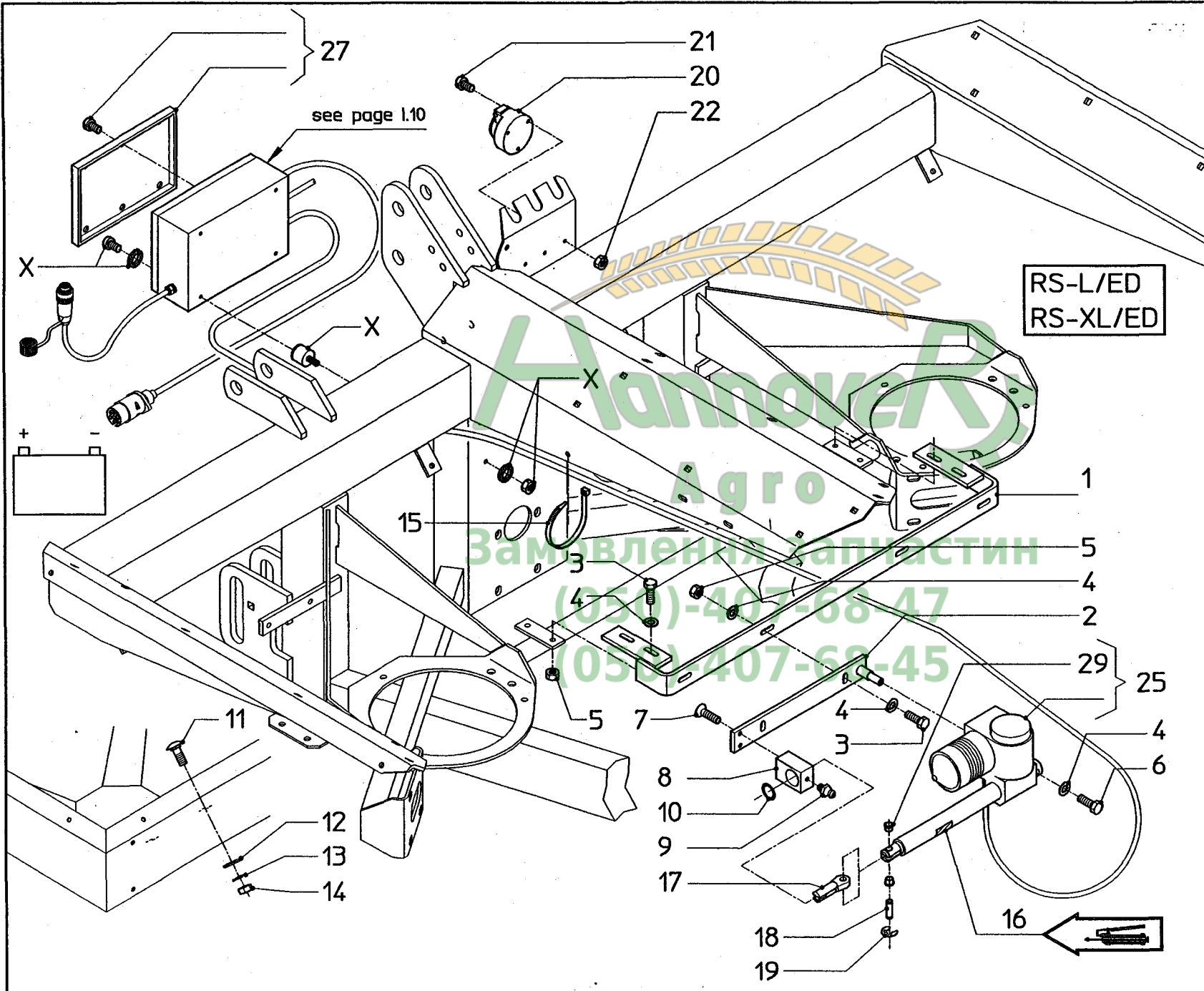
RS-M/ED
RS-L/ED
RS-XL/ED

Агротех
Замовлення запчастин
(050)-407-68-47
(050)-407-68-45



RS-M/ED

| bestelnummer ordernumber num. a commander Bestellnummer | | |
|--|-----------|-----------------|
| | 79770273X | 1 |
| 1 | B1988886 | 1 |
| 2 | B1843386 | 1 |
| 3 | 30121830 | 4 M8x30/RVS |
| 4 | 30111800 | 19 8,4/RVS |
| 5 | 30125800 | 8 M8/RVS/Nyloc |
| 6 | 30121820 | 2 M8x20/RVS |
| 7 | 30122225 | 4 B5,5x25/RVS |
| 8 | B1843478 | 2 |
| 9 | 41702899 | 2 M8x1,25 |
| 10 | 36107317 | 2 29,74x3.53 |
| 11 | 30119120 | 4 M10x20/RVS |
| 12 | 30163250 | 4 13/RVS |
| 13 | 30117100 | 4 A10/RVS |
| 14 | 30161100 | 4 M10/RVS |
| 15 | 80504001 | 8 365x7,8 |
| 16 | 90090190 | 2 |
| 17 | B1843178 | 2 |
| 18 | B1843002 | 1 L=35 |
| 19 | 30116090 | 2 9/RVS |
| 20 | B0341273 | 1 |
| 21 | 30127535 | 3 M5x35/RVS |
| 22 | 30125500 | 3 M5/RVS/Nyloc |
| 23 | 30121630 | 1 M6x30/RVS |
| 24 | 30163600 | 2 A6,4/RVS |
| 25 | B2007302 | 1 |
| 26 | B2007286 | 1 |
| 27 | 30121245 | 1 M12x45/RVS |
| 28 | 30125120 | 1 M12/RVS/Nyloc |
| 29 | 30121825 | 5 M8x25/RVS |
| 30 | B1988486 | 1 |
| 32 | B2008886 | 1 |
| 33 | 30125600 | 1 M6/RVS/Nyloc |
| 34 | 30111100 | 2 10,5/RVS |
| <hr/> | | |
| | 79730060X | 1 |
| 35 | B0461273 | 2 |
| 37 | B0489473 | 1 |
| 39 | B2235978 | 2 |
| X | B0483873 | 4 |



bestelnummer
ordernumber
num. a commander
Bestellnummer

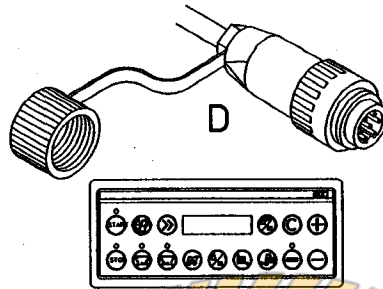
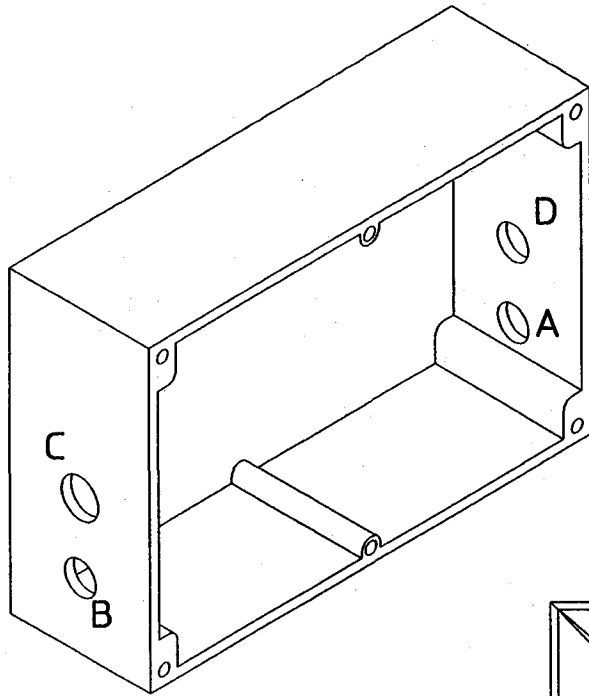
| 79770205X | | 1 |
|-----------|----------|----------------|
| 1 | B1747686 | 1 |
| 2 | B1843386 | 2 |
| 3 | 30121830 | 8 M8x30/RVS |
| 4 | 30111800 | 14 8,4/RVS |
| 5 | 30125800 | 8 M8/RVS/Nyloc |
| 6 | 30121820 | 2 M8x20/RVS |
| 7 | 30122225 | 4 B5,5x25/RVS |
| 8 | B1843478 | 2 |
| 9 | 41702899 | 2 M8x1,25 |
| 10 | 36107317 | 2 29,74x3,53 |
| 11 | 30119120 | 4 M10x20/RVS |
| 12 | 30163250 | 4 13/RVS |
| 13 | 30117100 | 4 A10/RVS |
| 14 | 30161100 | 4 M10/RVS |
| 15 | 80504001 | 8 365x7,8 |
| 16 | 90090190 | 2 |
| 17 | B1843178 | 2 |
| 18 | B1843002 | 2 L=35 |
| 19 | 30116090 | 4 9/RVS |
| 20 | B0341273 | 1 |
| 21 | 30127535 | 3 M5x35/RVS |
| 22 | 30125500 | 3 M5/RVS/Nyloc |

| 79730060X | | 1 |
|-----------|----------|---|
| 25 | B0461273 | 2 |
| 27 | B0489473 | 1 |
| 29 | B2235978 | 2 |
| X | B0483873 | 4 |

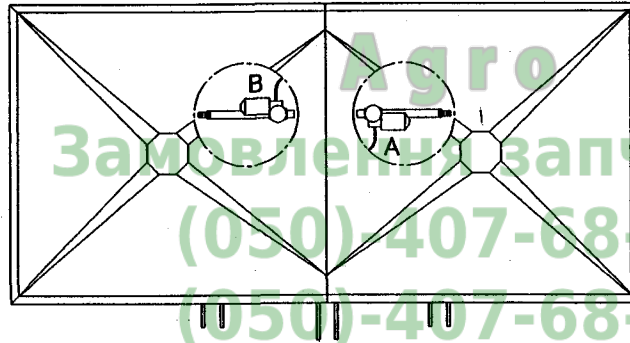
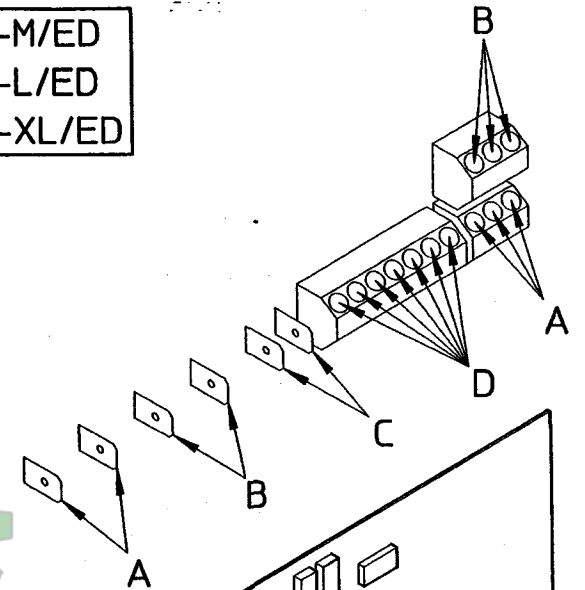
serial number 73051

I.10

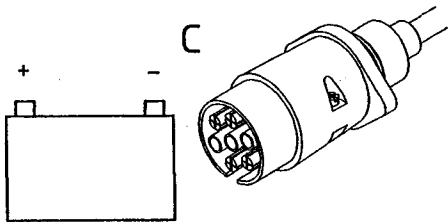
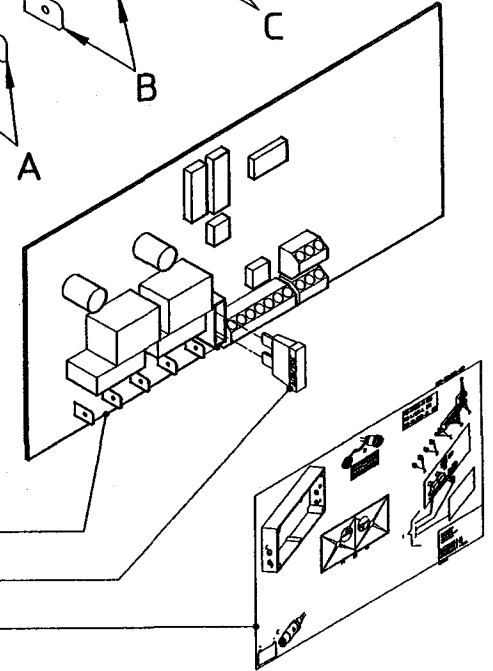
RS-ED 825



RS-M/ED
RS-L/ED
RS-XL/ED



АnnoveR
Агро
Замовлення запчастин
(050) 407-68-47
(050) 407-68-45

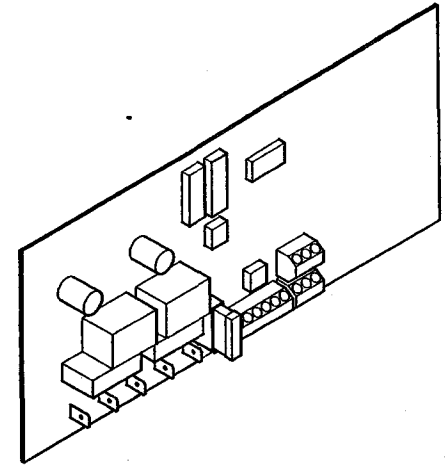
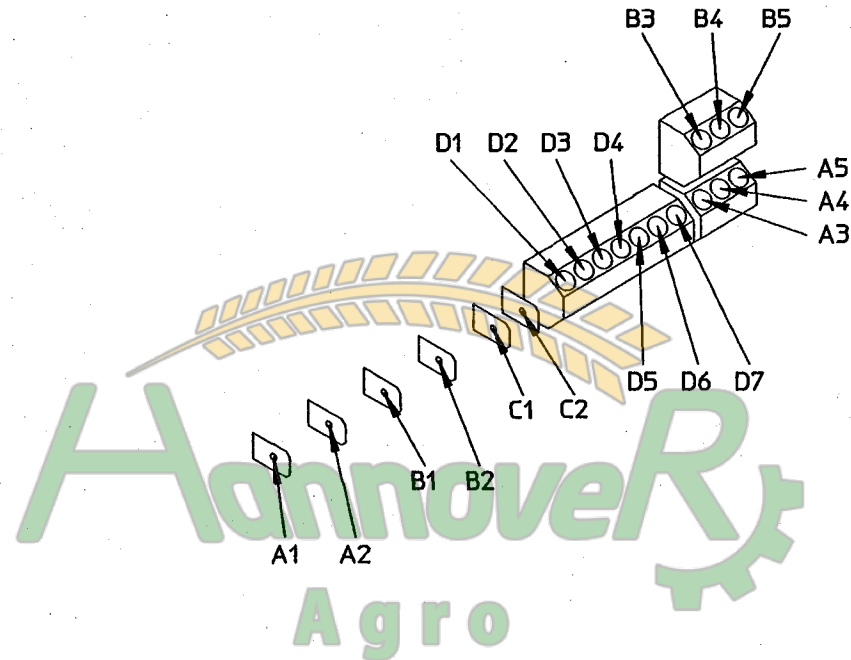
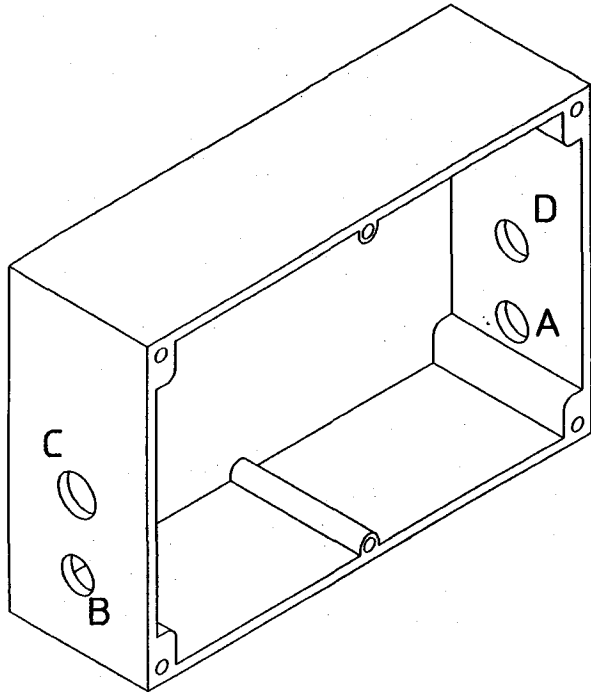


| | | |
|------------------|----------|-------|
| bestelnummer | | |
| ordernumber | | |
| num. a commander | | |
| Bestellnummer | | |
| 1 | 79730272 | 1 |
| 2 | 70009403 | 1 |
| 3 | B0066573 | 1 30A |

serial number 73051

I.11

RS-ED 825



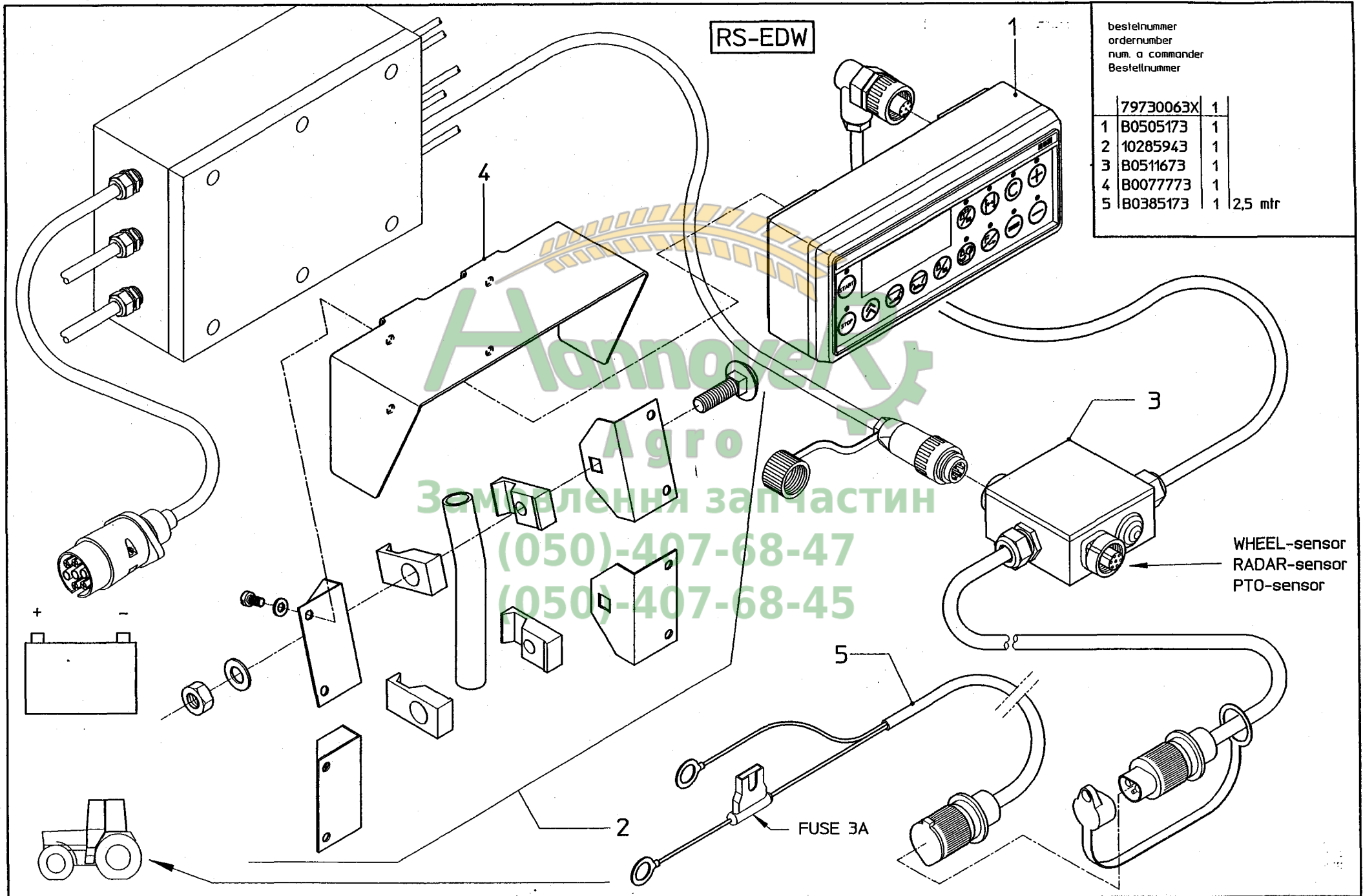
Агров
 Zamovlennia zapchastin
 (050)-407-68-47
 (050)-407-68-47

| ELEKT. KABELS ELECTRIC LINES ELEKT. LEITUNGEN CABLES ELECTRIQUES CABLES ELECTRICAS | KLEURCODES | COLOR CODES | FARBKODES | CODES DE COULEURS | CODIGOS DE COLORES |
|--|-------------------|---------------------|---------------------|--------------------|-----------------------|
| A1 & B1 | geel+rood | yellow+red | gelb+rot | jaune+rouge | amarillo+rojo |
| A2 & B2 | wit(oranje)+groen | white(orange)+green | weiss(orange)+gruen | blanc(orange)+vert | blanco(naranja)+verde |
| A3 & B3 | bruin | brown | braun | brun | maron |
| A4 & B4 | blauw | blue | blau | bleu | azul |
| A5 & B5 | zwart | black | schwarz | noir | negro |
| C1 | bruin | brown | braun | brun | maron |
| C2 | blauw | blue | blau | bleu | azul |
| D1 | bruin | brown | braun | brun | maron |
| D2 | rood | red | rot | rouge | rojo |
| D3 | oranje | orange | orange | orange | naranja |
| D4 | geel | yellow | gelb | jaune | amarillo |
| D5 | groen | green | gruen | vert | verde |
| D6 | blauw | blue | blau | bleu | azul |
| D7 | zwart | black | schwarz | noir | negro |

serial number 73051

I.12

RS-EDW

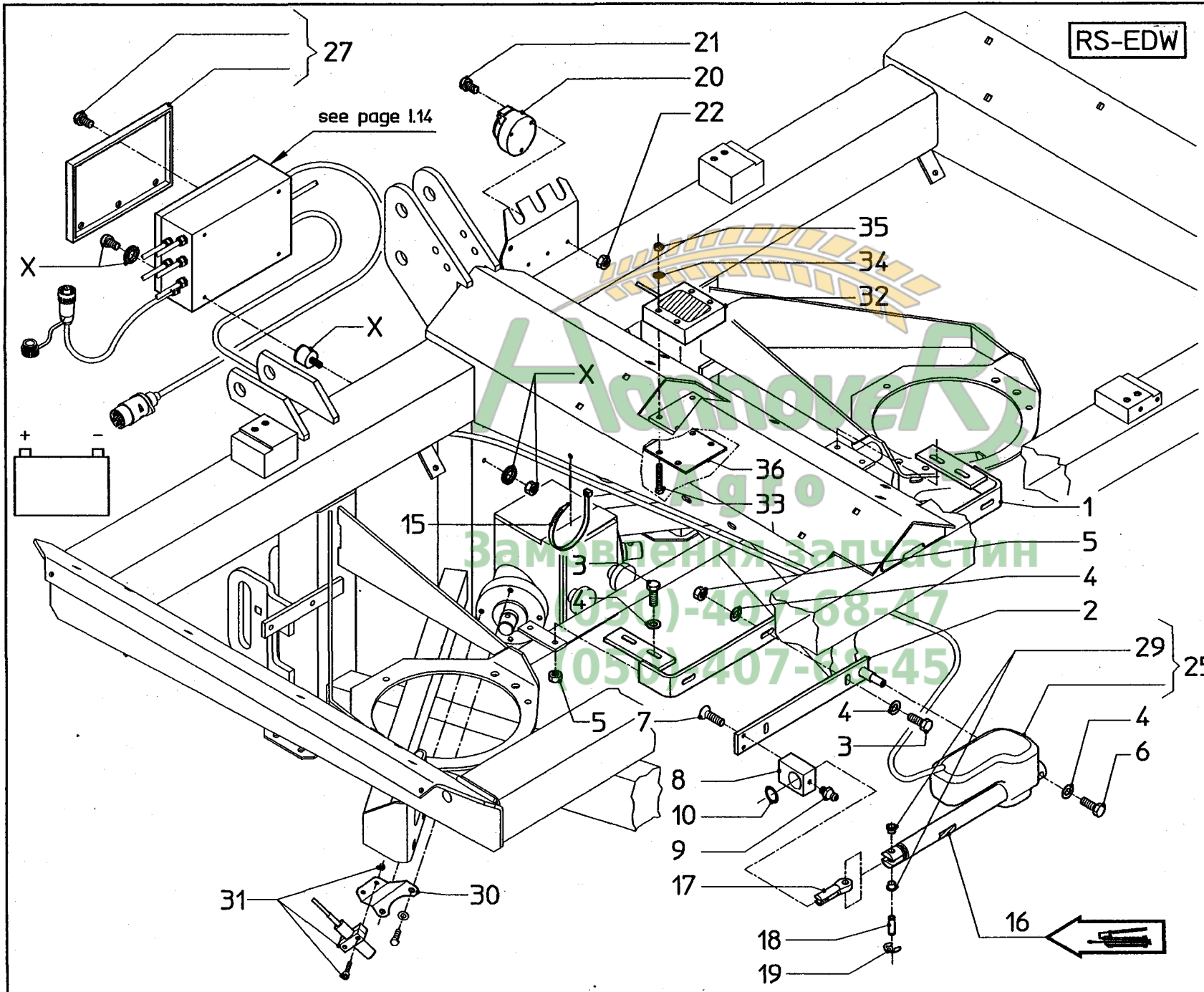


bestellnummer
ordernumber
num. a commander
Bestellnummer

| | | | |
|---|-----------|---|---------|
| | 79730063X | 1 | |
| 1 | B0505173 | 1 | |
| 2 | 10285943 | 1 | |
| 3 | B0511673 | 1 | |
| 4 | B0077773 | 1 | |
| 5 | B0385173 | 1 | 2,5 mtr |

WHEEL-sensor
RADAR-sensor
PTO-sensor

FUSE 3A



| bestelnummer | | ordernumber | | num. a commander | | Bestellnummer | |
|--------------|-----------|-------------|--------------|------------------|--|---------------|--|
| | 79770205X | 1 | | | | | |
| 1 | B1747686 | 1 | | | | | |
| 2 | B1843386 | 2 | | | | | |
| 3 | 30121830 | 8 | M8x30/RVS | | | | |
| 4 | 30111800 | 14 | 8,4/RVS | | | | |
| 5 | 30125800 | 8 | M8/RVS/Nyloc | | | | |
| 6 | 30121820 | 2 | M8x20/RVS | | | | |
| 7 | 30122225 | 4 | B5,5x25/RVS | | | | |
| 8 | B1843478 | 2 | | | | | |
| 9 | 41702899 | 2 | M8x1,25 | | | | |
| 10 | 36107317 | 2 | 29,74x3,53 | | | | |
| 15 | 80504001 | 8 | 365x7,8 | | | | |
| 16 | 90090190 | 2 | | | | | |
| 17 | B1843178 | 2 | | | | | |
| 18 | B1843002 | 2 | L=35 | | | | |
| 19 | 30116090 | 4 | 9/RVS | | | | |
| 20 | B0341273 | 1 | | | | | |
| 21 | 30127535 | 3 | M5x35/RVS | | | | |
| 22 | 30125500 | 3 | M5/RVS/Nyloc | | | | |

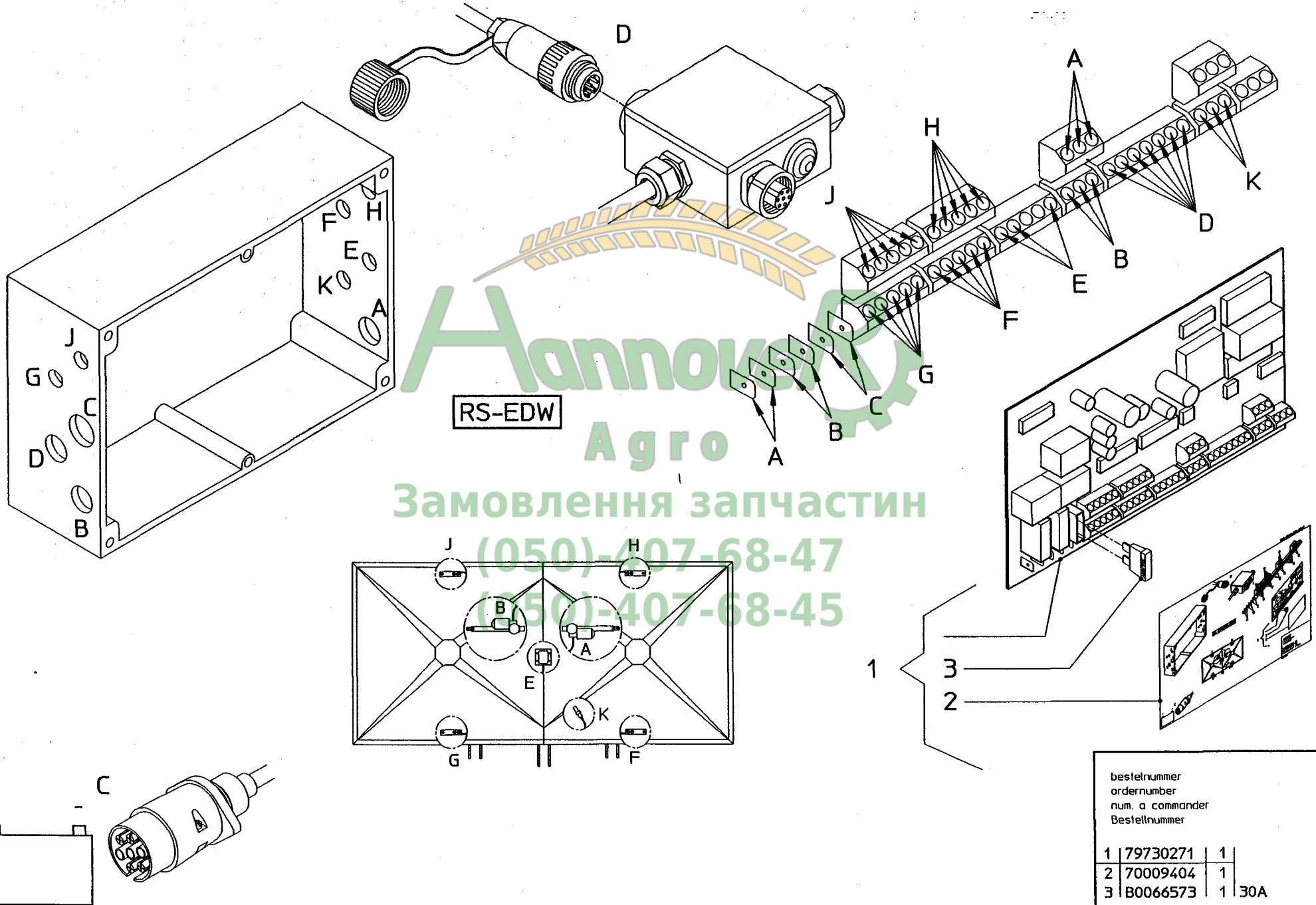
| | | | | | | | |
|----|-----------|---|--|--|--|--|--|
| | 79730062X | 1 | | | | | |
| 25 | B0461273 | 2 | | | | | |
| 27 | B0489473 | 1 | | | | | |
| 29 | B2235978 | 2 | | | | | |
| 31 | B0430273 | 1 | | | | | |
| 32 | B0522373 | 1 | | | | | |
| X | B0483873 | 4 | | | | | |

| | | | | | | | |
|----|----------|---|--------------|--|--|--|--|
| 30 | B2217894 | 1 | | | | | |
| 33 | 30120870 | 4 | M8x70/RVS | | | | |
| 34 | 30111800 | 4 | 8,4/RVS | | | | |
| 35 | 30125800 | 4 | M8/RVS/Nyloc | | | | |
| 36 | B2336686 | 1 | | | | | |

serial number 73051

I.14

RS-EDW

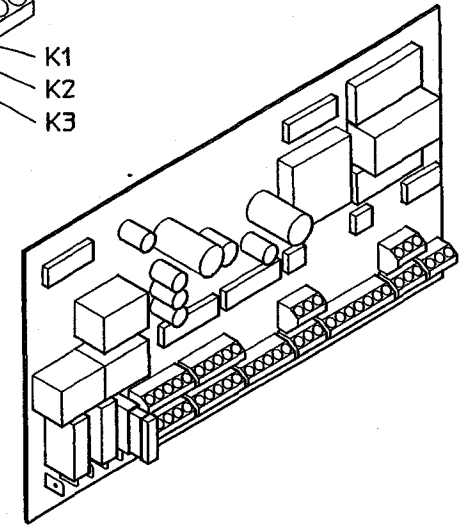
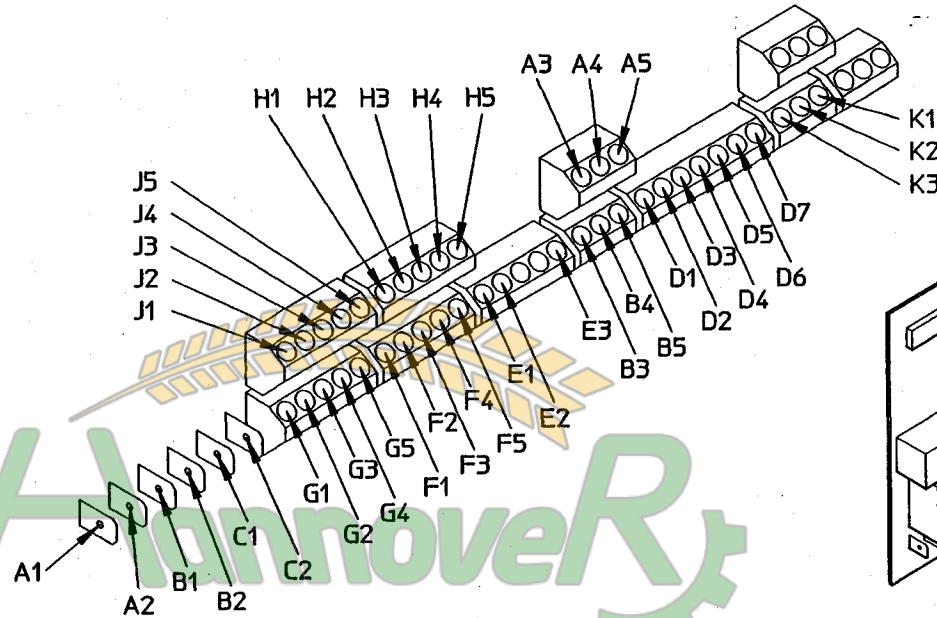
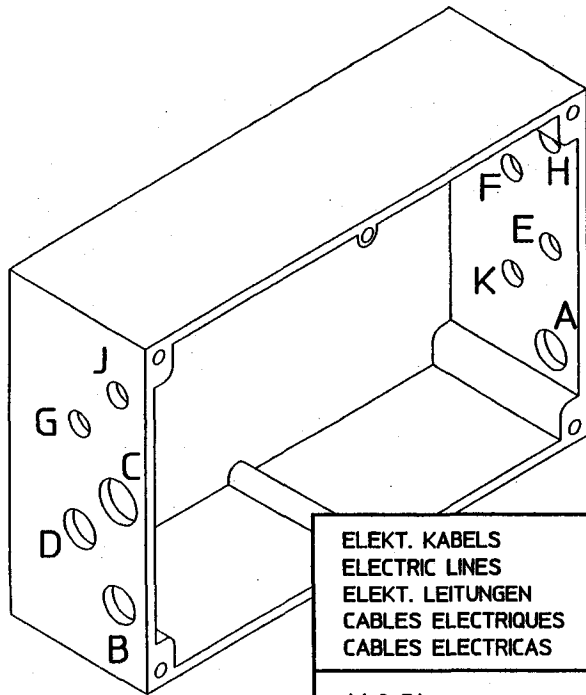


RS-EDW

Данное
 Агро
 Замовлення запчастин
 (050)-407-68-47
 (050)-407-68-45

bestelnummer
 ordernumber
 num. a commander
 Bestellnummer

| | | |
|---|----------|-------|
| 1 | 79730271 | 1 |
| 2 | 70009404 | 1 |
| 3 | B0066573 | 1 30A |



ELEKT. KABELS
ELECTRIC LINES
ELEKT. LEITUNGEN
CABLES ELECTRIQUES
CABLES ELECTRICAS

A1 & B1
A2 & B2
A3 & B3
A4 & B4
A5 & B5
C1
C2
D1
D2
D3
D4
D5
D6
D7
E1
E2
E3
F1 & G1 & H1 & J1
F2 & G2 & H2 & J2
F3 & G3 & H3 & J3
F4 & G4 & H4 & J4
F5 & G5 & H5 & J5
K1
K2
K3

KLEURCODES

geel+rood
wit(oranje)+groen
bruin
blauw
zwart
bruin
blauw
rood
oranje
geel
groen
blauw
zwart
bruin
zwart
blauw
rood
groen
wit
zwart
afscherming blauw
bruin
zwart
blauw

COLOR CODES

yellow+red
white(orange)+green
brown
blue
black
brown
blue
brown
red
orange
yellow
green
blue
black
brown
black
blue
red
green
white
black
shielding blue
brown
black
blue

FARBKODES

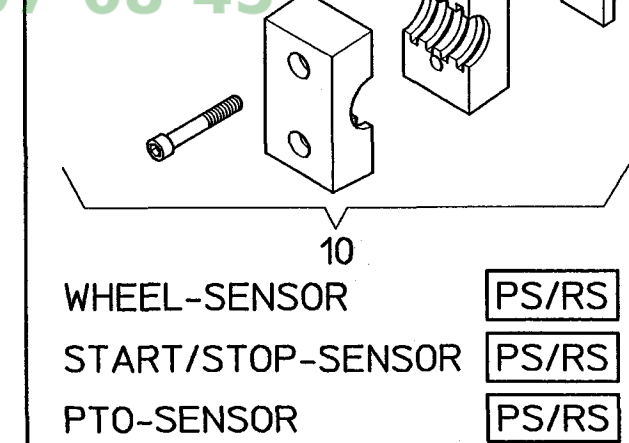
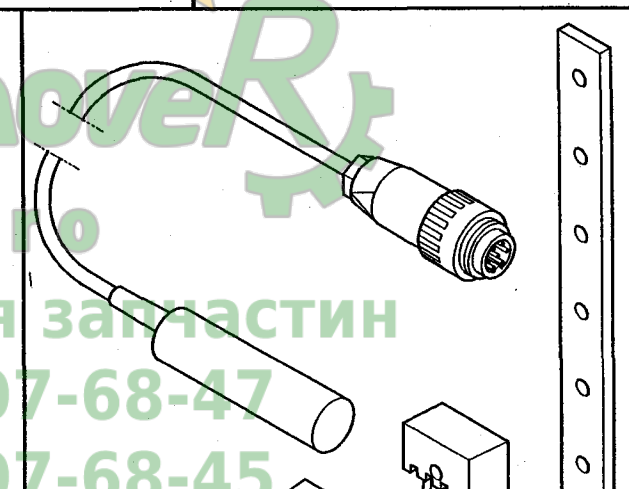
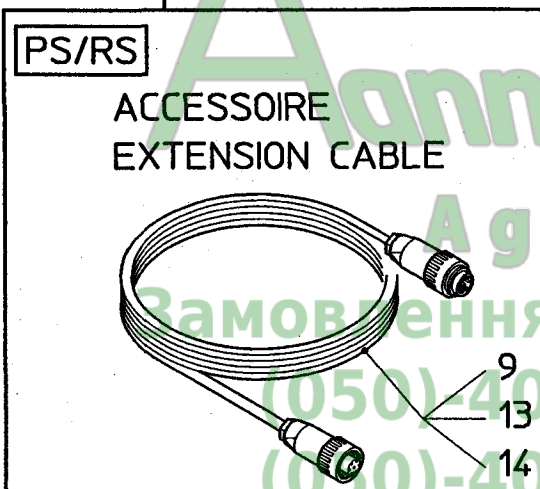
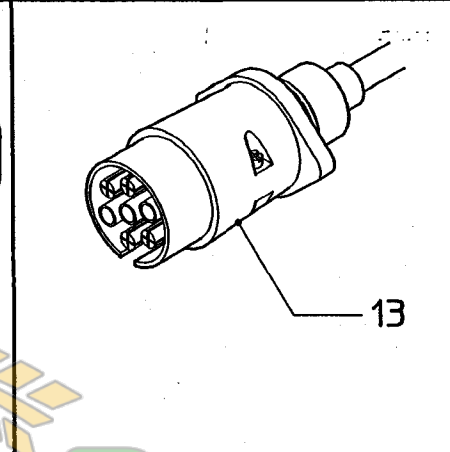
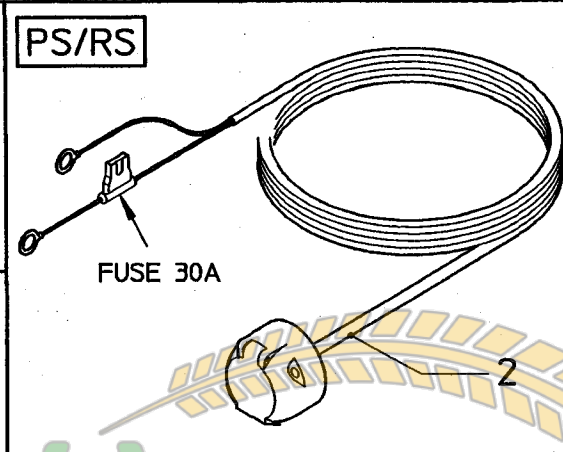
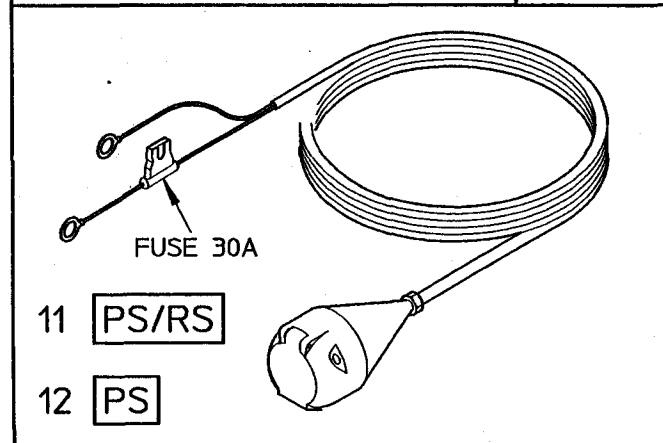
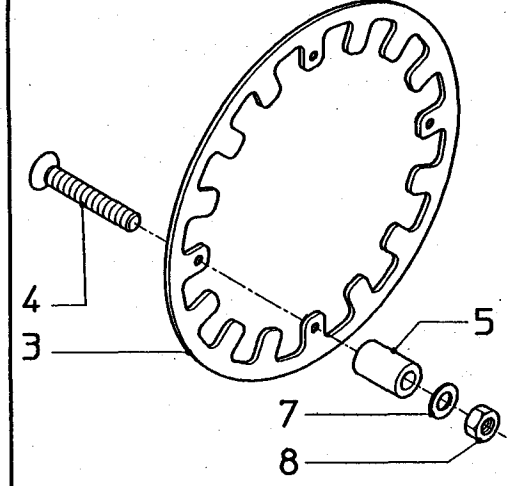
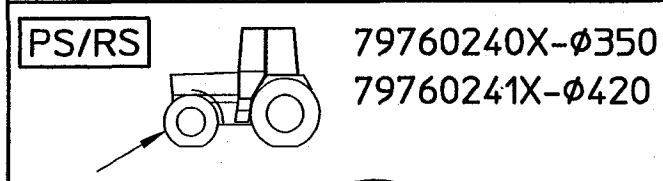
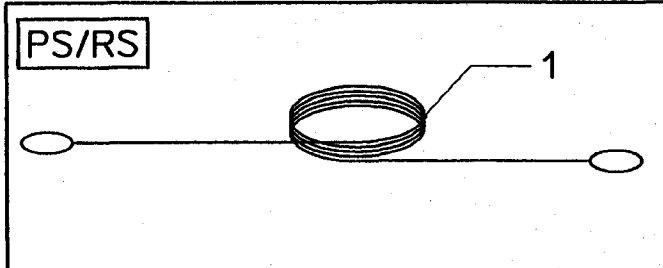
gelb+rot
weiss(orange)+gruen
braun
blau
schwarz
braun
blau
braun
rot
orange
gelb
gruen
blau
schwarz
braun
schwarz
blau
rot
grun
weiss
schwarz
abschirmung blau
braun
schwarz
blau

CODES DE COULEURS

jaune+rouge
blanc(orange)+vert
brun
bleu
noir
brun
bleu
brun
rouge
orange
jaune
vert
bleu
noir
brun
noir
bleu
rouge
vert
blanc
noir
blindage bleu
brun
noir
bleu

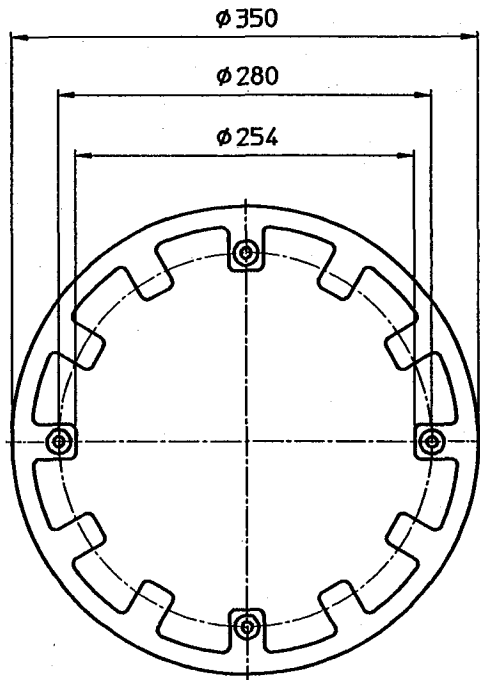
CODIGOS DE COLORES

amarillo+rojo
blanco(naranja)+verde
maron
azul
negro
maron
azul
maron
rojo
orange
naranja
amarillo
verde
azul
negro
maron
negro
azul
rojo
verde
blanco
negro
blindaje azul
maron
negro
azul

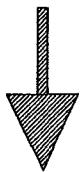


| | | | | | | | |
|--------------|-----------|-------------|------------|------------------|--|---------------|--|
| bestelnummer | | ordernumber | | num. a commander | | Bestellnummer | |
| 1 | 17870127 | 1 | 20 | mtr | | | |
| 2 | 97896548 | 1 | 4,5 | mtr | | | |
| 79760240X | | 1 | | | | | |
| 3 | B1517586 | 1 | ϕ 350 | | | | |
| 4 | 30363850 | 4 | 10.9-M8x50 | | | | |
| 5 | B1153493 | 4 | | | | | |
| 7 | 31461800 | 4 | 8,4 | | | | |
| 8 | 30575800 | 4 | 8/M8/Nyloc | | | | |
| 79760241X | | 1 | | | | | |
| 3 | B1517686 | 1 | ϕ 420 | | | | |
| 4 | 30363850 | 4 | 10.9-M8x50 | | | | |
| 5 | B1153493 | 4 | | | | | |
| 7 | 31461800 | 4 | 8,4 | | | | |
| 8 | 30575800 | 4 | 8/M8/Nyloc | | | | |
| 9 | B0304073 | 1 | 6 | mtr | | | |
| 13 | B0326573 | 1 | 2,5 | mtr | | | |
| 14 | B0326973 | 1 | 1,5 | mtr | | | |
| 15 | B0318373 | 1 | 2,5 | mtr-90° | | | |
| 10 | B0430273 | 1 | | | | | |
| 11 | B0308073 | 1 | 4,5 | mtr | | | |
| 12 | B0319473 | 1 | 2 | mtr-A.T.V. | | | |
| 13 | 148101007 | 1 | 1 | | | | |

- PS/ED
- RS-M/ED
- RS-L/ED
- RS-XL/ED
- RS-EDW

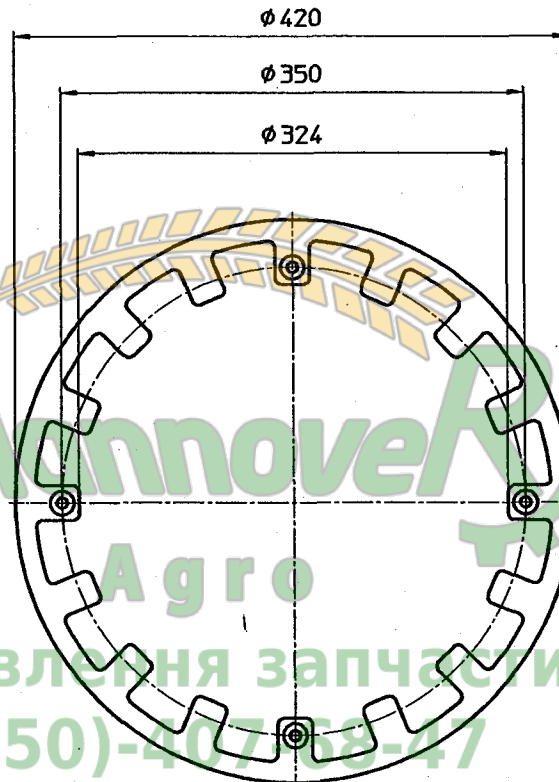


B1517586

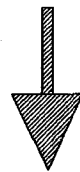


X = 4,5 mm

Y = 9 mm

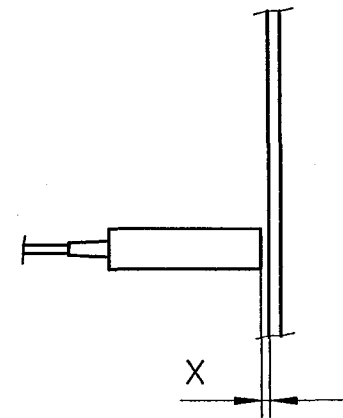
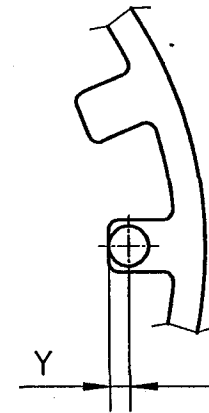


B1517686



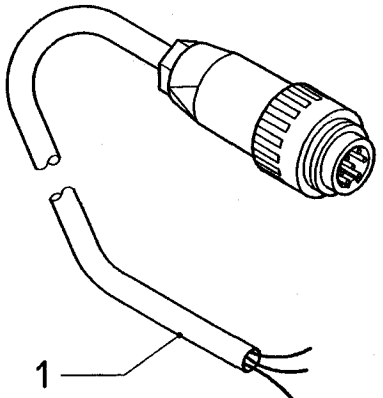
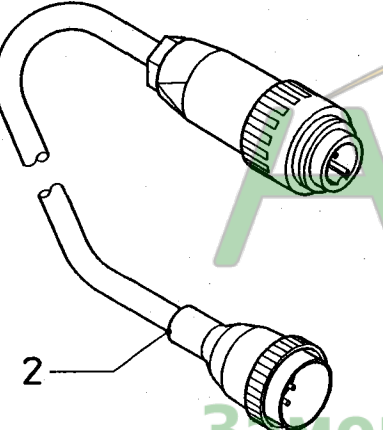
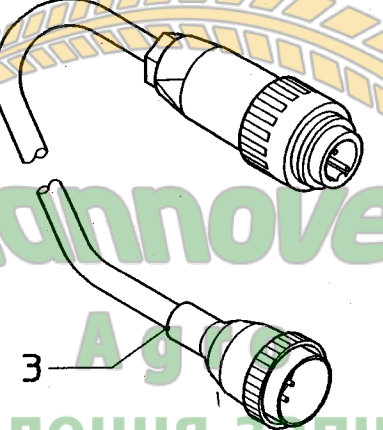
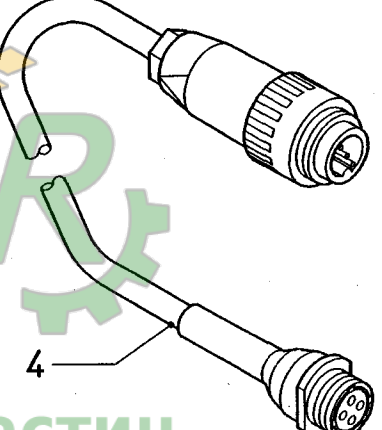
X = 3,5 mm

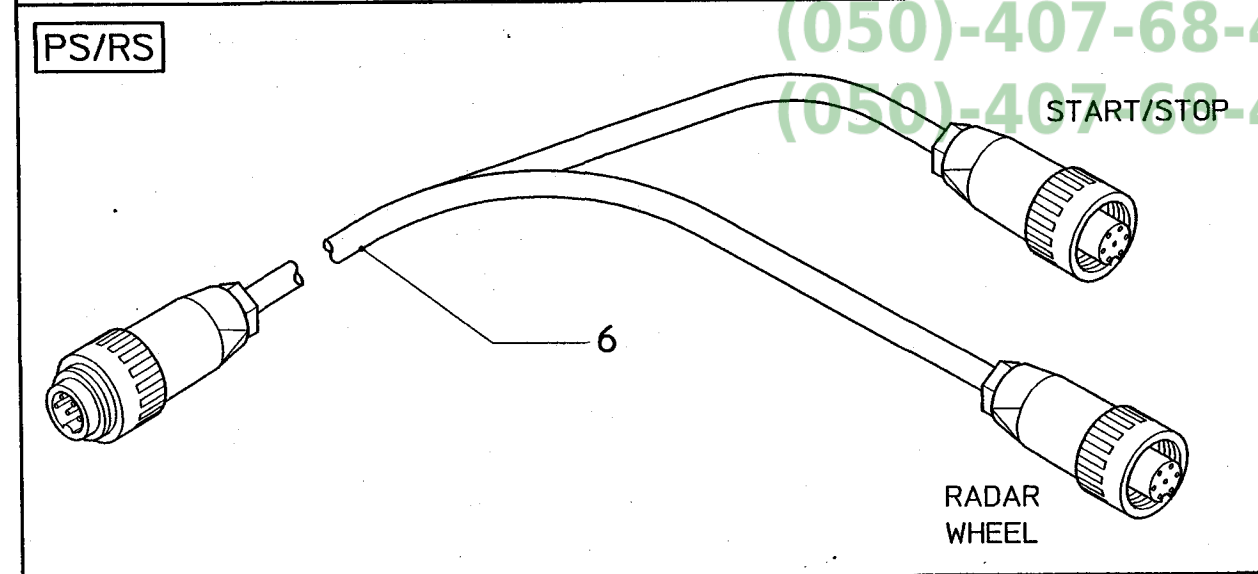
Y = 10,5 mm



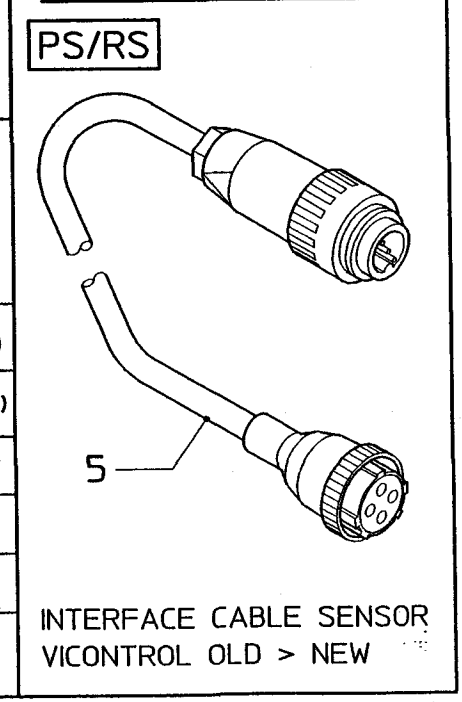
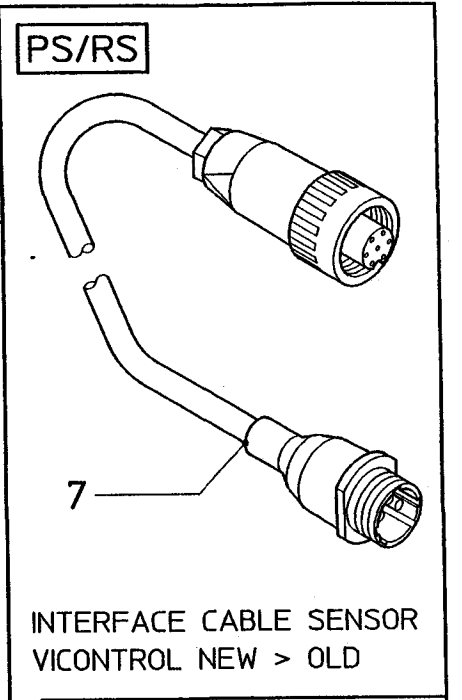
Аннов Агро
Замовлення запчастин
(050)-407-68-47
(050)-407-68-45

CABLE FOR RADAR SENSOR TRACTOR

| SELF-MADE | DATATRONIC-1 | DATATRONIC-2 | DICKEY JOHN |
|--|---|--|---|
| <p>PS/RS</p>  <p>1</p> | <p>PS/RS</p>  <p>2</p> | <p>PS/RS</p>  <p>3</p> | <p>PS/RS</p>  <p>4</p> |



| bestelnummer ordernumber num. a commander Bestellnummer |
|--|
| 1 B0303973 1 Self-made |
| 2 B0305873 1 Datatronic-1(MF) |
| 3 B0385273 1 Datatronic-2(MF) |
| 4 B0305973 1 Dickey John |
| 5 B0305773 1 Old > New |
| 6 B0307973 1 |
| 7 B0310873 1 New > Old |



Annover
 Замовлення запчастин
 (050)-407-68-43
 (050)-407-68-43



Spare parts list
Ersatzteilliste
Onderdelenlijst
Liste de pieces de rechange
Lista de piezas de recambio
Reservdels lista

KVERNELAND NIEUW-VENNEP B.V.
Hoofdweg 1278
NL-2153 LR Nieuw-Vennep
The Netherlands



Замовлення запчастин

(050)-407-68-47

(050)-407-68-45

Prod. series nr 73051

Vanaf produkt identiteitnr (PIN)

Effective from ident.nr (PIN)

Gültig ab Prod. nr (PIN)

A partir du no d'ident. du produit (PIN)

A partir del num. Ident. del producto (PIN)

Gällande fr. o. m. ident.nr (PIN)

01001

70.009.200/6